

LOC I-FJU <b>110.1</b>	APP CRS <b>045°</b>	Rwy ldg <b>8075</b>	TDZE <b>661</b>
		Apt Elev <b>680</b>	

# ILS or LOC RWY 4R

CHICAGO O'HARE INTL (ORD)

RADAR required for procedure entry.

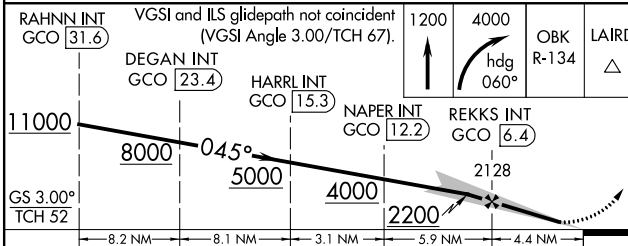
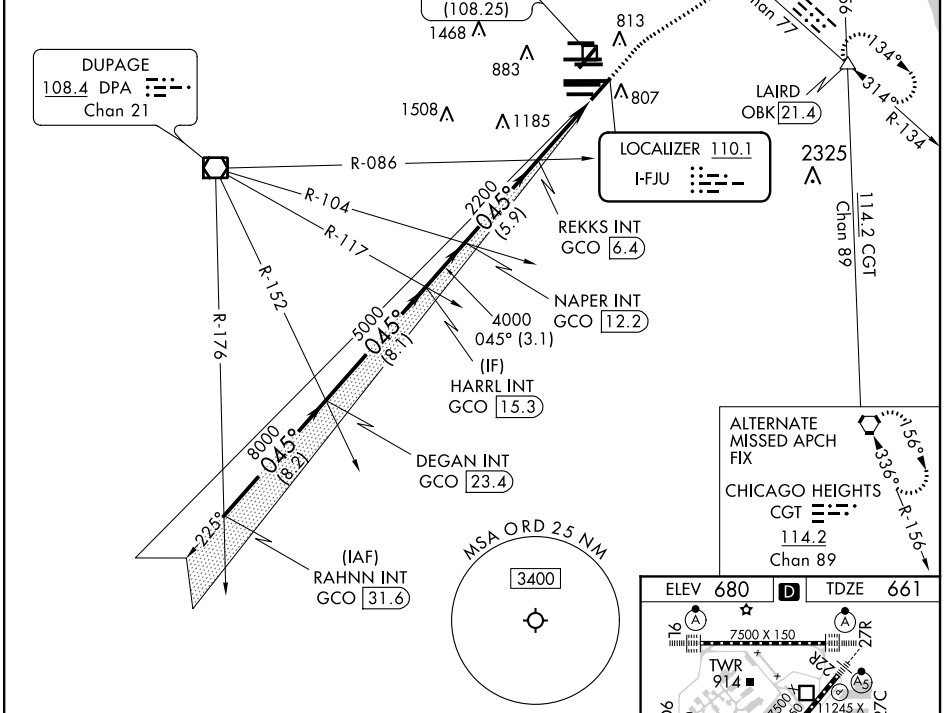
Simultaneous approach authorized.

MALSR

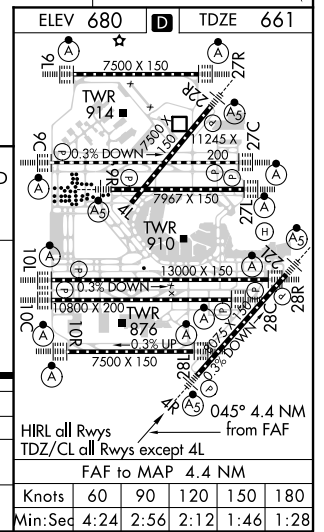
MISSED APPROACH: Climb to 1200 then climbing right turn to 4000 on heading 060° and OBK VOR/DME R-134 to LAIRD INT/OBK 21.4 DME and hold.

CHICAGO APP CON <b>119.0 292.125</b>	O'HARE TOWERS <b>128.15 348.0</b> (Rwy 9L/27R) <b>133.0 348.0</b> (10R/28L) <b>348.0</b> (CENTER)	GND CON (TWR CENTER) <b>121.75</b> (OBND) <b>121.9</b> (IBND)	CLNC DEL <b>121.6</b>
---	--	---	--------------------------

D-ATIS <b>135.4</b>
<b>282.225</b>



RAHNN INT GCO 31.6	VGSI and ILS glidepath not coincident (VGSI Angle 3.00/TCH 67).		1200	4000	OBK R-134	LAIRD
DEGAN INT GCO 23.4	HARRL INT GCO 15.3	NAPER INT GCO 12.2	REKKS INT GCO 6.4			
11000		8000		2128		
GS 3.00° TCH 52		5000		2200		
CATEGORY	A	B	C	D		
S-ILS 4R	861/18		200 (200-½)			
S-LOC 4R	1160/24 499 (500-½)		1160/50 499 (500-1)			
CIRCLING	1220-1 540 (600-1)		1220-1½ 540 (600-1½)		1460-2½ 780 (800-2½)	



EC-3, 25 FEB 2021 to 25 MAR 2021

EC-3, 25 FEB 2021 to 25 MAR 2021