

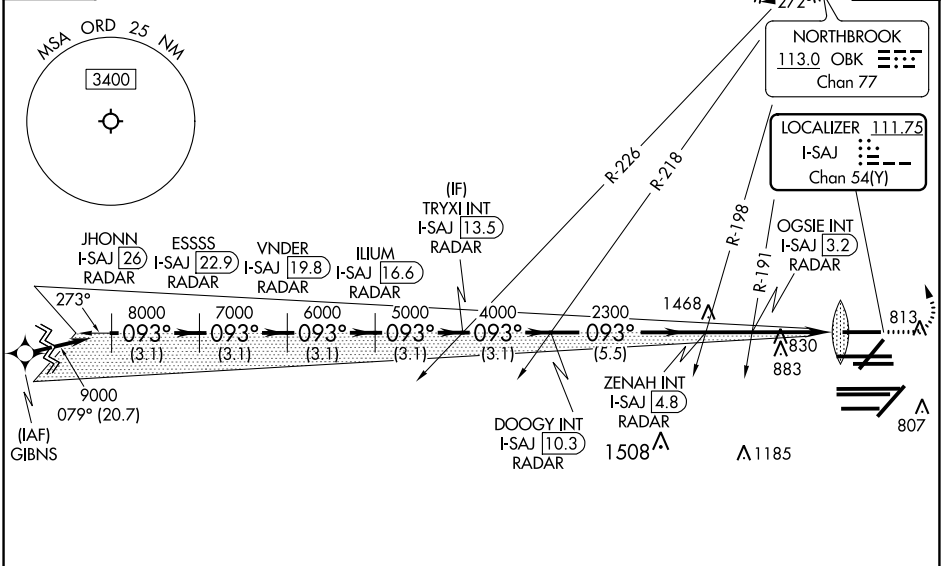
LOC/DME I-SAJ 111.75 Chan 54 (Y)	APP CRS 093°	Rwy Idg 7500 TDZE 668 Apt Elev 680
--	------------------------	---

ILS or LOC RWY 9L

CHICAGO O'HARE INTL (ORD)

RNAV-1 GPS or RADAR required for procedure entry. RADAR or DME required.		ALSF-2 	MISSED APPROACH: Climb to 1100 then climbing left turn to 4000 direct OBK VOR/DME and hold, continue climb-in-hold to 4000.
Simultaneous approach authorized.			
CHICAGO APP CON 119.0 292.125	O'HARE TOWERS 128.15 348.0 (Rwy 9L/27R) 133.0 348.0 (110R/28L) 124.125 (TWR NORTH) 121.75 (OBND) 118.05 (TWR SOUTH) 121.9 (IBND) 226.675 (ALL TWRS)	GND CON (TWR CENTER) 121.75 (OBND) 121.9 (IBND)	CLNC DEL 121.6

D-ATIS 135.4 282.225	CPDLC
--	-------



JHONN I-SAJ 26 RADAR	ESSSS I-SAJ 22.9 RADAR	VNDER I-SAJ 19.8 RADAR	ILUUM I-SAJ 16.6 RADAR	DOOGY INT I-SAJ 10.3 RADAR	OGSIE INT I-SAJ 3.2 RADAR	ZENAH INT I-SAJ 4.8 RADAR	TRYXI INT I-SAJ 13.5 RADAR	1100 4000 OBK
9000 093°	8000 093°	7000 093°	6000 093°	5000 093°	4000 093°	2300 093°	2300 *1760	*LOC only
GS 3.00° TCH 55	3.1 NM	3.1 NM	3.1 NM	3.1 NM	3.1 NM	5.5 NM	1.6 NM	I-SAJ DME ANTENNA IM
								I-SAJ 1
								I-SAJ 0.2
CATEGORY	A	B	C	D				
S-ILS 9L	868/18		200 (200-½)					
S-LOC 9L	1100/24	432 (500-½)	1100/40	432 (500-¾)				

ELEV 680	TDZE 668
093° 5 NM from FAF	
7500 X 150	
TWR 914	TWR 910
11245 X 150	13000 X 150
7967 X 150	876
10800 X 200	7500 X 150
HIRL all Rwys	
TDZ/CL all Rwys except 4L	
FAF to MAP 5 NM	
Knots	60 90 120 150 180
Min:Sec	5:00 3:20 2:30 2:00 1:40

EC-3, 25 FEB 2021 to 25 MAR 2021

EC-3, 25 FEB 2021 to 25 MAR 2021