

CHICAGO, ILLINOIS

AL-166 (FAA)

ILS PRM RWY 10C (CAT II & III) (CLOSE PARALLEL)

CHICAGO O'HARE INTL (ORD)

LOC/DME I-SXH	APP CRS	Rwy Idg	10540
108.95	093°	TDZE	669
Chan 26(Y)		Apt Elev	680

RNAV 1-GPS or RADAR required for procedure entry. DME or RADAR required.
From GIBNS: RNAV-1 GPS required.

▼ CAT II: RVR 1000 authorized with specific OPSPEC, MSPEC, or LOA approval and use of Autoland or HUD touchdown.
Simultaneous approach authorized. Use of FD or AP required during simultaneous operations. Dual VHF comm required. See additional requirements on AAUP.

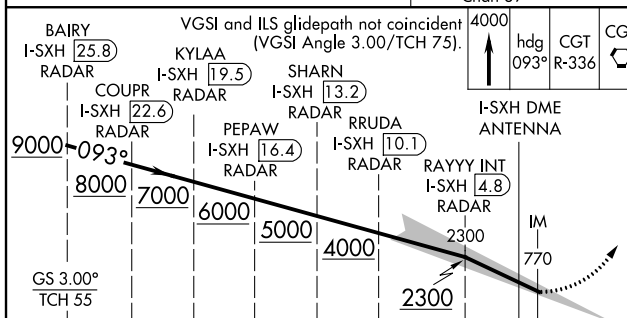
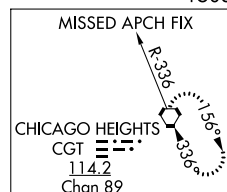
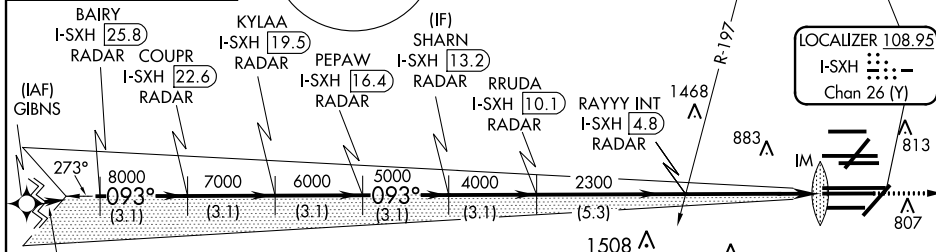
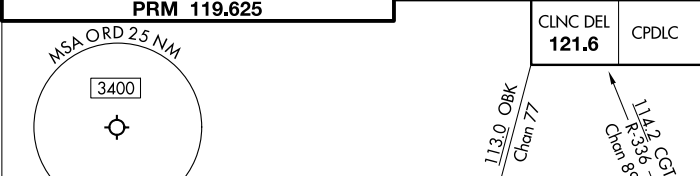
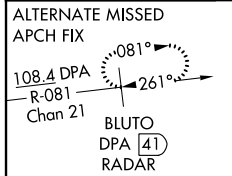


MISSED APPROACH: Climb to 4000 on heading 093° and CGT VORTAC R-336 to CGT VORTAC and hold.

D-ATIS	CHICAGO APP CON
135.4	282.225
	119.0 292.125

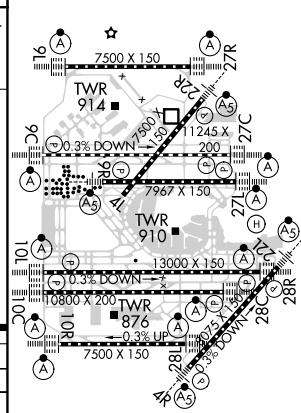
O'HARE TOWERS			
128.15	348.0	133.0	348.0 (10R/28L)
120.75	121.15	126.9	132.7 348.0 (CENTER)
PRM 119.625			

GND CON (TWR CENTER)	124.125 (TWR NORTH)	121.75 (OBND)
	118.05 (TWR SOUTH)	121.9 (IBND)
	226.675 (ALL TWR)	



ELEV 680	D	TDZE 669
----------	---	----------

GS 3.00° TCH 55	3.1 NM	3.1 NM	3.1 NM	3.1 NM	3.1 NM	5.3 NM	5 NM	1091'
CATEGORY	A		B		C		D	
S-ILS 10C	CAT II RA 102/12 100 DA 769							
S-ILS 10C	CAT III RVR 06							



CATEGORY II and III ILS - SPECIAL AIRCREW & AIRCRAFT CERTIFICATION REQUIRED

HIRL all Rwys
TDZ/CL all Rwys except 4L

CHICAGO, ILLINOIS
Amdt 1A 03JAN19

41°59'N-87°54'W

CHICAGO O'HARE INTL (ORD)

ILS PRM RWY 10C (CAT II & III) (CLOSE PARALLEL)

EC-3, 25 FEB 2021 to 25 MAR 2021

EC-3, 25 FEB 2021 to 25 MAR 2021