

# ILS PRM RWY 10C (SA CAT I) (CLOSE PARALLEL) CHICAGO O'HARE INTL (ORD)

LOC/DME I-SXH <b>108.95</b> Chan 26(Y)	APP CRS <b>093°</b>	Rwy Ldg <b>10540</b> TDZE <b>669</b> Apt Elev <b>680</b>
--	------------------------	--

RNAV 1-GPS or RADAR required for procedure entry. DME or RADAR required.  
From GIBNS: RNAV-1 GPS required.

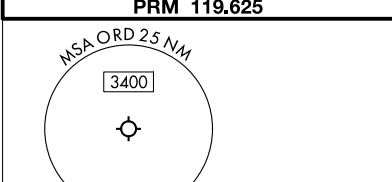
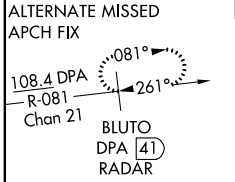
Requires specific OPSPec, MSPEC, or LOA approval and use of HUD to DH. Simultaneous approach authorized. Use of FD or AP required during simultaneous operations. Dual VHF comm required. See additional requirements on AAUP.

ALSF-2  
MISSED APPROACH: Climb to 4000 on heading 093° and CGT VORTAC R-336 to CGT VORTAC and hold.

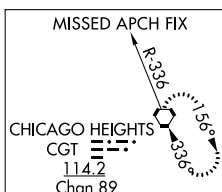
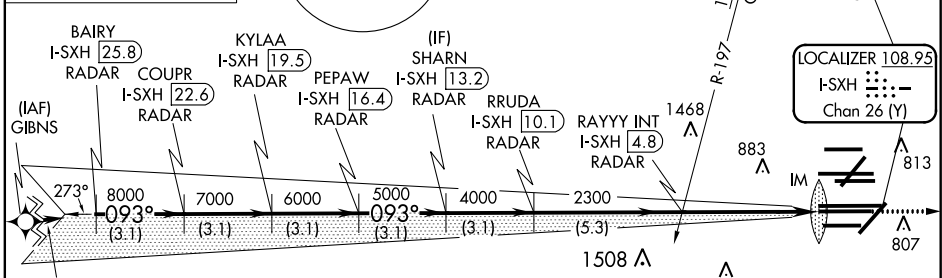
D-ATIS <b>135.4</b>	CHICAGO APP CON <b>282.225 119.0 292.125</b>
------------------------	---

O'HARE TOWERS			
<b>128.15</b>	<b>348.0</b> (Rwy 9L/27R)	<b>133.0</b>	<b>348.0</b> (10R/28L)
<b>120.75</b>	<b>121.15</b>	<b>126.9</b>	<b>132.7</b>
<b>PRM 119.625</b> (CENTER)			

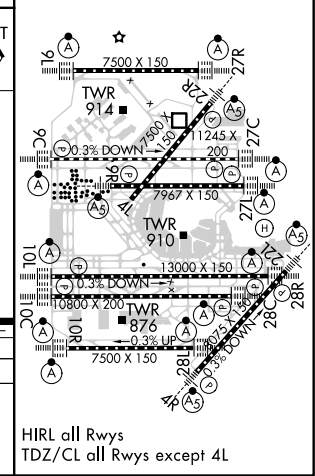
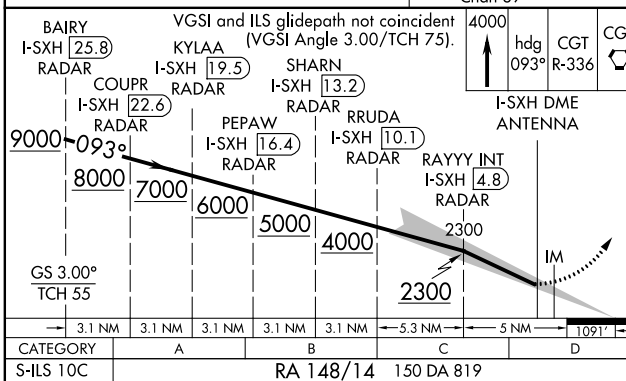
GND CON (TWR NORTH) <b>124.125</b>	(TWR CENTER) <b>121.75</b> (OBND)
(TWR SOUTH) <b>118.05</b>	(IBND) <b>121.9</b>
<b>226.675</b> (ALL TWRs)	



CNLC DEL <b>121.6</b>	CPDLC
--------------------------	-------



ELEV 680	D	TDZE 669
----------	---	----------



**SA CATEGORY I ILS - SPECIAL AIRCREW & AIRCRAFT CERTIFICATION REQUIRED**

EC-3, 25 FEB 2021 to 25 MAR 2021

EC-3, 25 FEB 2021 to 25 MAR 2021