

ILS PRM RWY 28C (CAT II & III) (CLOSE PARALLEL) CHICAGO O'HARE INTL (ORD)

| | | |
|--|------------------------|--|
| LOC/DME I-VZE 108.95 Chan 26 (Y) | APP CRS 273° | Rwy ldg 10800 TDZE 651 Apt Elev 680 |
|--|------------------------|--|

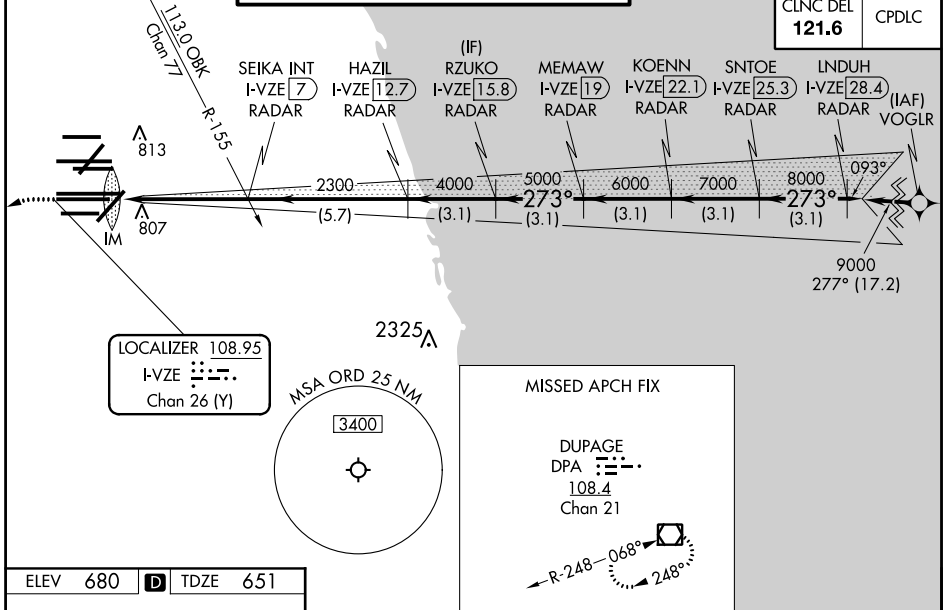
Aircraft not GPS equipped - RADAR required for procedure entry.
DME or RADAR required.
From VOGLR: RNAV 1-GPS required.

ALSF-2
MISSED APPROACH:
Climb to 1100 then climbing left turn to 4000 on heading 215° and DPA VOR/DME R-082 to DPA VOR/DME and hold.

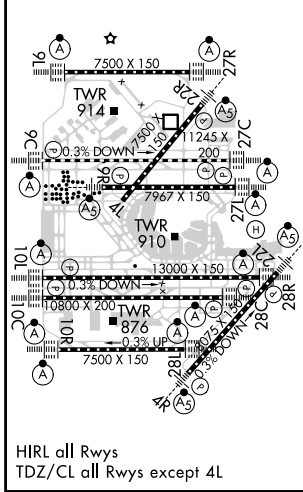
Simultaneous approach authorized. Use of FD or AP required during simultaneous operations. Dual VHF comm required. See additional requirements on AAUP.
CAT II: RVR 1000 authorized with specific OPSPEC, MSPEC, or LOA approval and use of autoland or HUD to touchdown.

| | | | |
|--|---|---|---|
| D-ATIS 135.4 282.225 | CHICAGO APP CON 119.0 292.125 | O'HARE TOWERS 128.15 348.0 (Rwy 9L/27R) 133.0 348.0 (10R/28L) 120.75 121.15 126.9 132.7 348.0 (CENTER) PRM 119.625 | GND CON (TWR CENTER) 124.125 (TWR NORTH) 121.75 (OBND) 118.05 (TWR SOUTH) 121.9 (IBND) 226.675 (ALL TWRs) |
|--|---|---|---|

| | |
|--------------------------|-------|
| CLNC DEL 121.6 | CPDLC |
|--------------------------|-------|



| | | |
|-----------------|----------|-----------------|
| ELEV 680 | D | TDZE 651 |
|-----------------|----------|-----------------|



| | | | | | |
|-----------|-----------------------------|-----------|-----|---|--|
| 1100 | 4000 | DPA R-082 | DPA | VGSI and ILS glidepath not coincident (VGSI Angle 3.00/TCH 80). | LINDUH I-VZE [28.4] RADAR |
| hdg 215° | | | | | RZUKO I-VZE [15.8] RADAR |
| | | | | | KOENN I-VZE [22.1] RADAR |
| | | | | | SNTOE I-VZE [25.3] RADAR |
| | | | | | SEIKA INT I-VZE [7] RADAR |
| | | | | | HAZIL I-VZE [12.7] RADAR |
| | | | | | MEMAW I-VZE [19] RADAR |
| | | | | | 2300 4000 5000 6000 7000 8000 9000 |
| | | | | | GS 3.00° TCH 55 |
| | | | | | 1044' 5 NM 5.7 NM 3.1 NM 3.1 NM 3.1 NM 3.1 NM 3.1 NM |
| CATEGORY | A | B | C | D | |
| S-ILS 28C | CAT II RA 105/12 100 DA 751 | | | | |
| S-ILS 28C | CAT III RVR 06 | | | | |

CATEGORY II & III ILS - SPECIAL AIRCREW & AIRCRAFT CERTIFICATION REQUIRED