

LOC/DME I-BYW 110.9 Chan 46	APP CRS 091°	Rwy Idg 7500	TDZE 680	Apt Elev 680
--	------------------------	-----------------	-------------	-----------------

ILS Y or LOC Y RWY 10R

CHICAGO O'HARE INTL (ORD)

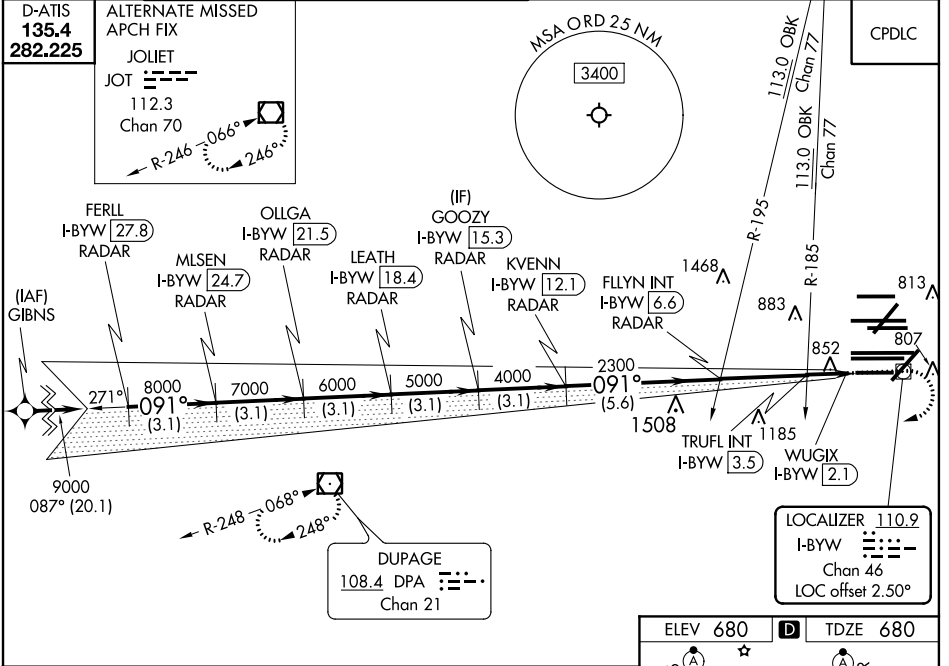
RNAV 1-GPS or RADAR required for procedure entry. DME or RADAR required.
 From GIBNS: RNAV-1 GPS required.

ALSF-2

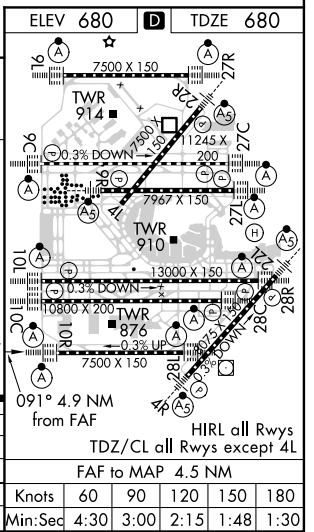
MISSED APPROACH: Climb to 1200 then climbing right turn to 4000 direct DPA VOR/DME and hold.

Simultaneous approach authorized. Inop table does not apply to S-ILS 10R all Cats.
 For inop ALS, increase S-LOC 10R Cat A and B visibility to 1 SM.
 Rwy 10R helicopter visibility reduction below 3/4 SM NA.

CHICAGO APP CON 119.0 292.125	O'HARE TOWERS 128.15 348.0 (Rwy 9L/27R) 133.0 348.0 (10R/28L) 126.9 132.7 348.0 (CENTER)	GND CON 124.125 (TWR NORTH) 118.05 (TWR SOUTH) 226.675 (ALL TWS)	(TWR CENTER) 121.75 (OBND) 121.9 (IBND)	CLNC DEL 121.6
---	--	--	---	--------------------------



FERLL I-BYW [27.8] RADAR	OLLGA I-BYW [21.5] RADAR	GOOZY I-BYW [15.3] RADAR	FLYIN INT I-BYW [6.6] RADAR	TRUFL INT I-BYW [3.5] RADAR	WUGIX I-BYW [2.1] RADAR
MLSEN I-BYW [24.7] RADAR	LEATH I-BYW [18.4] RADAR	KVENN I-BYW [12.1] RADAR			
9000 091°	8000 091°	7000 091°	6000 091°	5000 091°	4000 091°
GS 3.00° TCH 55					
3.1 NM	3.1 NM	3.1 NM	3.1 NM	3.1 NM	5.6 NM
					3.1 NM
					0.6 NM
					0.8 NM
					0.4 NM
CATEGORY	A	B	C	D	
S-ILS 10R	930-3/4 250 (300-3/4)			1220-1 540 (600-1)	
S-LOC 10R	1220-3/4	540 (600-3/4)			
TRUFL FIX MINIMUMS (DUAL VOR RECEIVERS OR DME REQUIRED)					
S-LOC 10R	1120-3/4 440 (500-3/4)				



EC-3, 25 FEB 2021 to 25 MAR 2021

EC-3, 25 FEB 2021 to 25 MAR 2021