

WAAS CH 48904 W10A	APP CRS 093°	Rwy Idg 12246 TDZE 672 Apt Elev 680
--	------------------------	--

RNAV (GPS) RWY 10L

CHICAGO O'HARE INTL (ORD)

RADAR required for procedure entry. RNP APCH.

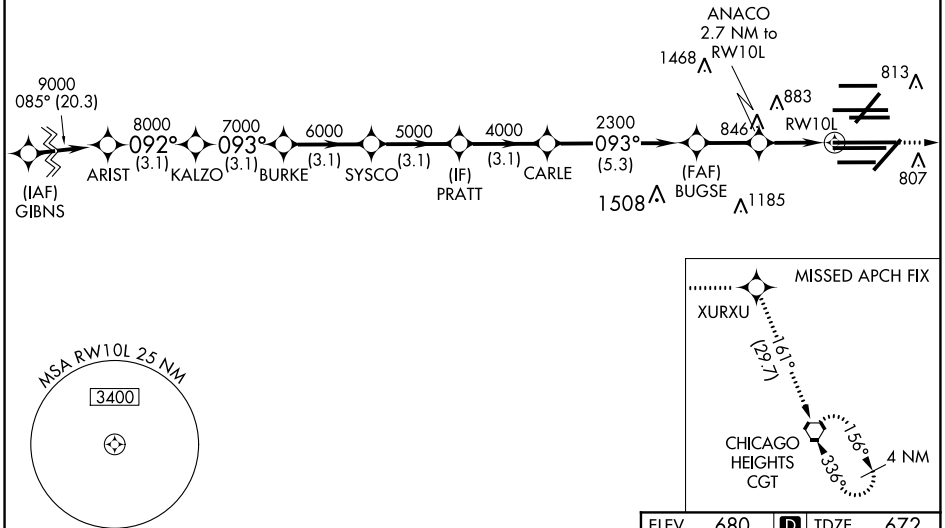
▼ For uncompensated Baro-VNAV systems, LNAV/VNAV NA below -19°C or above 54°C. Simultaneous approach authorized. LNAV procedure NA during simultaneous operations. Use of FD or AP providing RNAV track guidance required during simultaneous operations.



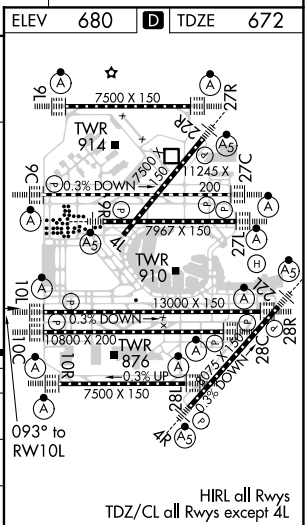
MISSED APPROACH: Climb to 4000 direct XURXU and on track 161° to CGT VORTAC and hold.

D-ATIS 135.4 282.225	CHICAGO APP CON 119.0 292.125	O'HARE TOWERS 128.15 348.0 (Rwy 9L/27R) 133.0 348.0 (10R/28L) 120.75 121.15 126.9 132.7 348.0 (CENTER)	GND CON (TWR NORTH) 124.125 (TWR SOUTH) 118.05 (ALL TWRS) 226.675	(TWR CENTER) 121.75 (OBND) (IBND) 121.9
--	---	--	--	--

CLNC DEL 121.6	CPDLC
--------------------------	-------



VGSi and RNAV glidepath not coincident (VGSi Angle 3.00/TCH 74).		4000	XURXU	tr 161°	CGT					
ARIST		KALZO	BURKE	SYSCO	PRATT	ANACO 2.7 NM to RW10L	BUGSE	2300	*1.2 NM to RW10L	RW10L
9000 092°		8000	7000	6000	5000	4000	2300	*1580		
GP 3.00° TCH 56										
	3.1 NM	3.1 NM	3.1 NM	3.1 NM	3.1 NM	5.3 NM	-2.2 NM	1.5	1.2	
CATEGORY	A		B		C		D			
LPV DA	872/18		200 (200-½)							
LNAV/VNAV DA	1062/35		390 (400-¾)							
LNAV MDA	1120/24		448 (500-½)		1120/45		448 (500-¾)			



EC-3, 25 FEB 2021 to 25 MAR 2021

EC-3, 25 FEB 2021 to 25 MAR 2021