

WAAS CH 69508 W27B	APP CRS 273°	Rwy Idg TDZE Apt Elev	7500 664 680
----------------------------------------	------------------------	-----------------------------	-----------------------------------------

RNAV (GPS) RWY 27R

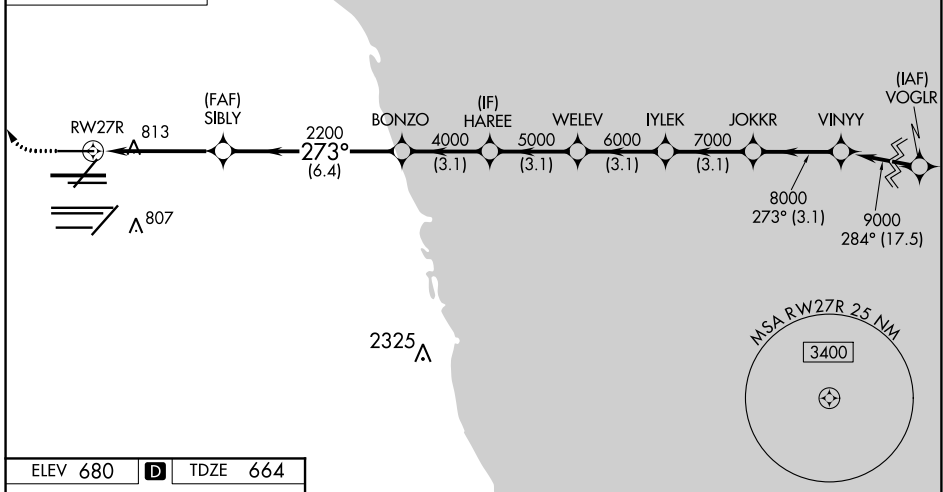
CHICAGO O'HARE INTL (ORD)

RNP APCH.	ALSF-2	MISSED APPROACH: Climb to 1100 then climbing right turn to 4000 direct OBK VOR/DME and hold, continue climb-in-hold to 4000.
RADAR required for procedure entry.		
▼ Simultaneous approach authorized. LNAV procedure NA during simultaneous operations. Use of FD or AP providing RNAV track guidance required during simultaneous operations. For uncompensated Baro-VNAV systems, procedure NA below -1°C or above 54°C.		

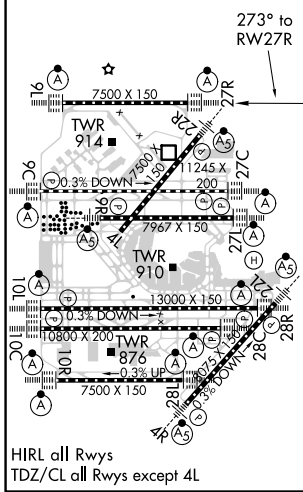
D-ATIS 135.4	CHICAGO APP CON 119.0 292.125	O'HARE TOWERS 128.15 348.0 (Rwy 9L/27R) 133.0 348.0 (10R/28L) 124.125 118.05 (TWR NORTH) 121.75 (OBND) 121.9 (IBND)		GND CON 282.225 119.0 292.125 (TWR SOUTH) 226.675 (ALL TWRS)
------------------------	-----------------------------------------	-----------------------------------------------------------------------------------------------------------------------------------------------------------	--	-------------------------------------------------------------------------------



CLNC DEL 121.6	CPDLC
--------------------------	-------



ELEV 680	D	TDZE 664
----------	----------	----------



1100	4000	OBK				
* LNAV only.						
* 1.3 NM to RWY 27R						
2200	4000	5000	6000	7000	8000	9000
1.3	3.4	6.4 NM	3.1 NM	3.1 NM	3.1 NM	3.1 NM
GP 3.00°	TCH 55					
CATEGORY	A	B	C	D		
LPV DA	864/18		200 (200-½)			
LNAV/VNAV DA	961/24		297 (300-½)			
LNAV MDA	1120/24 456 (500-½)		1120/45 456 (500-¾)			

EC-3, 25 FEB 2021 to 25 MAR 2021

EC-3, 25 FEB 2021 to 25 MAR 2021