

WAAS CH 81929 W04A	APP CRS 044°	Rwy Idg 8075 TDZE 661 Apt Elev 680
--	------------------------	---

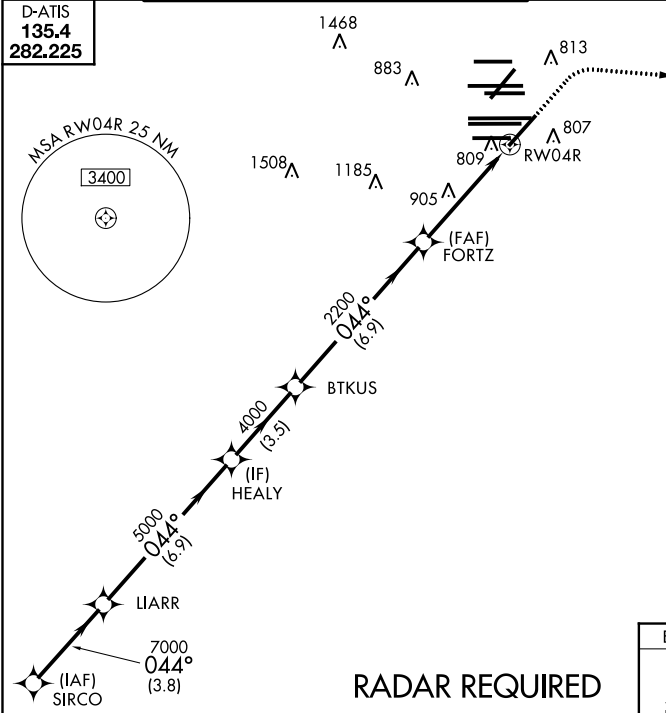
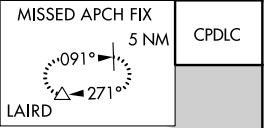
RNAV (GPS) RWY 4R

CHICAGO O'HARE INTL (ORD)

<p>⚠ For uncompensated Baro-VNAV systems, LNAV/VNAV NA below -22°C (-7°F) or above 39°C (102°F). Simultaneous approach authorized with Rwy 4L. DME/DME RNP-0.3 NA. LNAV procedure NA during simultaneous operations. Use of FD or AP providing RNAV track guidance required during simultaneous operations.</p>	<p>MALSR</p>	<p>MISSED APPROACH: Climb to 1200 then climbing right turn to 4000 direct LAIRD and hold, continue climb-in-hold to 4000.</p>
--	--------------	---

CHICAGO APP CON 119.0 292.125	O'HARE TOWERS 128.15 348.0 (Rwy 9L/27R) 133.0 348.0 (10R/28L) 120.75 121.15 126.9 132.7 348.0 (CENTER)	GND CON 124.125 (TWR NORTH) 118.05 (TWR SOUTH) 226.675 (ALL TWRS)	(TWR CENTER) 121.75 (OBND) 121.9 (IBND)	CLNC DEL 121.6
---	--	---	---	--------------------------

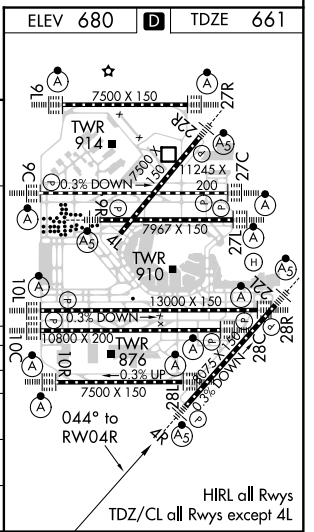
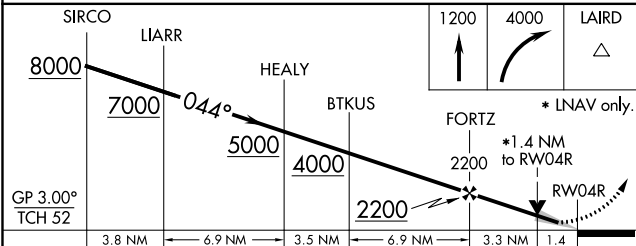
D-ATIS 135.4 282.225
--



EC-3, 25 FEB 2021 to 25 MAR 2021

EC-3, 25 FEB 2021 to 25 MAR 2021

RADAR REQUIRED



GP 3.00° TCH 52	3.8 NM	6.9 NM	3.5 NM	6.9 NM	3.3 NM	1.4
CATEGORY	A	B	C	D		
LPV DA		861/18	200 (200-½)			
LNAV/VNAV DA		990/32	329 (400-¾)			
LNAV MDA	1160/24	499 (500-½)	1160/50	499 (500-1)		
CIRCLING	1220-1	540 (600-1)	1220-1½ 540 (600-1½)	1460-2½ 780 (800-2½)		