

WAAS CH 99508 W09B	APP CRS 093°	Rwy ldg 7500 TDZE 668 Apt Elev 680
----------------------------------------	------------------------	---------------------------------------------------------------

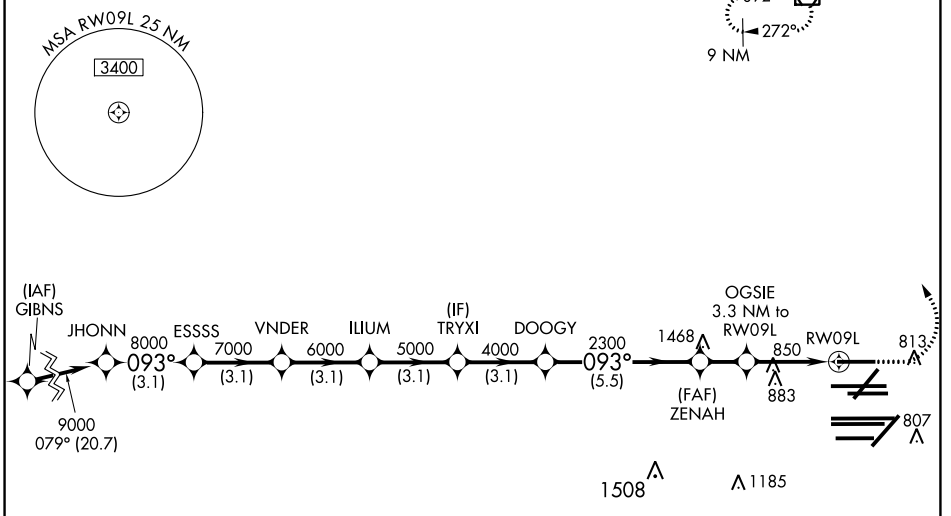
RNAV (GPS) RWY 9L

CHICAGO O'HARE INTL (ORD)

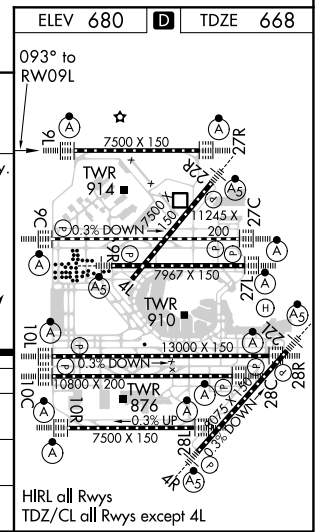
RADAR required for procedure entry. RNP APCH.		ALSF-2	MISSED APPROACH: Climb to 1100 then climbing left turn to 4000 direct OBK VOR/DME and hold, continue climb-in-hold to 4000.
Simultaneous approach authorized. LNAV procedure NA during simultaneous operations. Use of FD or AP providing RNAV track guidance required during simultaneous operations. For uncompensated Baro-VNAV systems, procedure NA below -1°C or above 54°C.			

CHICAGO APP CON 119.0 292.125	O'HARE TOWERS 128.15 348.0 (Rwy 9L/27R) 133.0 348.0 (10R/28L) 120.75 121.15 126.9 132.7 348.0 (CENTER)	GND CON (TWR NORTH) 124.125 (TWR SOUTH) 118.05 (ALL TWRs) 226.675	(TWR CENTER) 121.75 (OBND) (IBND) 121.9	CLNC DEL 121.6
-----------------------------------------	--------------------------------------------------------------------------------------------------------------------------------	----------------------------------------------------------------------------------------------	----------------------------------------------------------	--------------------------

D-ATIS 135.4 282.225	NORTHBROOK OBK 9 NM	CPDLC
------------------------------------------	------------------------	-------



ELEV 680		TDZE 668	
093° to RW09L			
JHONN 9000	ESSSS 8000	VNDER 7000	ILIUM 6000
TRYXI 5000	DOOGY 4000	ZENAH 2300	OGSIE 3.3 NM to RW09L
GP 3.00° TCH 55		*1.2 NM to RW09L	
3.1 NM	3.1 NM	3.1 NM	3.1 NM
3.1 NM	3.1 NM	5.5 NM	1.7 NM
2.1 NM	1.2 NM	*LNAV only.	
1100	4000	OBK	
1100/24	432 (500-½)	200 (200-½)	432 (500-¾)
1034/35	366 (400-⅝)		
HIRL all Rwys TDZ/CL all Rwys except 4L			



EC-3, 25 FEB 2021 to 25 MAR 2021

EC-3, 25 FEB 2021 to 25 MAR 2021