


WAAS CH 78204 W09A	APP CRS 093°	Rwy Idg 7709 TDZE 660 Apt Elev 680
--	------------------------	---

RNAV (GPS) RWY 9R

CHICAGO O'HARE INTL (ORD)

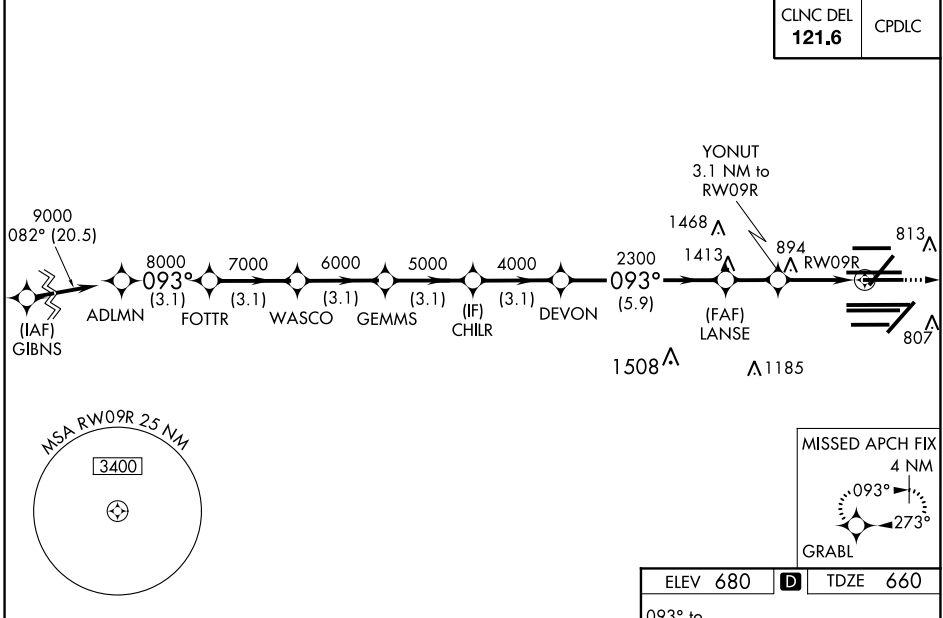
RADAR required for procedure entry. RNP APCH.

⚠ Simultaneous approach authorized. For uncompensated Baro-VNAV systems, LNAV/VNAV NA below -19°C or above 54°C. LNAV procedure NA during simultaneous operations. Use of FD or AP providing RNAV track guidance required during simultaneous operations. For inop ALS, increase LNAV/VNAV all Cats visibility to RVR 6000, and LNAV Cat C/D visibility to 1 3/8 SM.

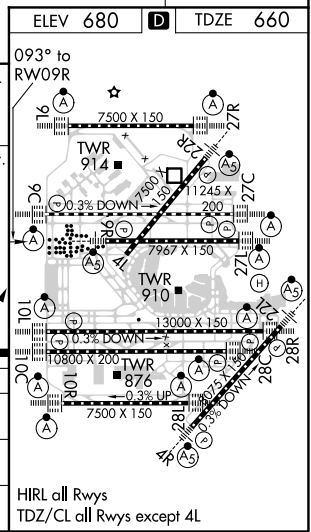
MALS R

 MISSED APPROACH:
 Climb to 4000 direct
 GRABL and hold.

D-ATIS 135.4 282.225	CHICAGO APP CON 119.0 292.125	O'HARE TOWERS 128.15 348.0 (Rwy 9L/27R) 133.0 348.0 (10R/28L) 120.75 121.15 126.9 132.7 348.0 (CENTER)	GND CON (TWR NORTH) 124.125 (TWR SOUTH) 118.05 (ALL TWS) 226.675	(TWR CENTER) 121.75 (OBND) 121.9 (IBND)
--	--	--	--	---

CLNC DEL 121.6	CPDLC
--------------------------	-------



VGSi and RNAV glidepath not coincident (VGSi Angle 3.00/TCH 74).		4000	GRABL							
ADLMN FOTTR WASCO GEMMS CHILR DEVON LANSE YONUT 3.1 NM to RWY09R		* LNAV only.								
9000	8000	7000	6000	5000	4000	2300	1700	2300	*1.3 NM to RWY09R	RWY09R
GP 3.00°	093°	093°	093°	093°	093°	093°	093°	093°	093°	093° to RWY09R
TCH 57										
	3.1 NM	3.1 NM	3.1 NM	3.1 NM	3.1 NM	5.9 NM	1.9 NM	1.8	1.3	
CATEGORY	A		B		C		D			
LPV DA	860/18		200 (200-1/2)							
LNAV/VNAV DA	1070/40		410 (400-3/4)							
LNAV MDA	1160/24		500 (500-1/2)		1160/50		500 (500-1)			



EC-3, 25 FEB 2021 to 25 MAR 2021

EC-3, 25 FEB 2021 to 25 MAR 2021