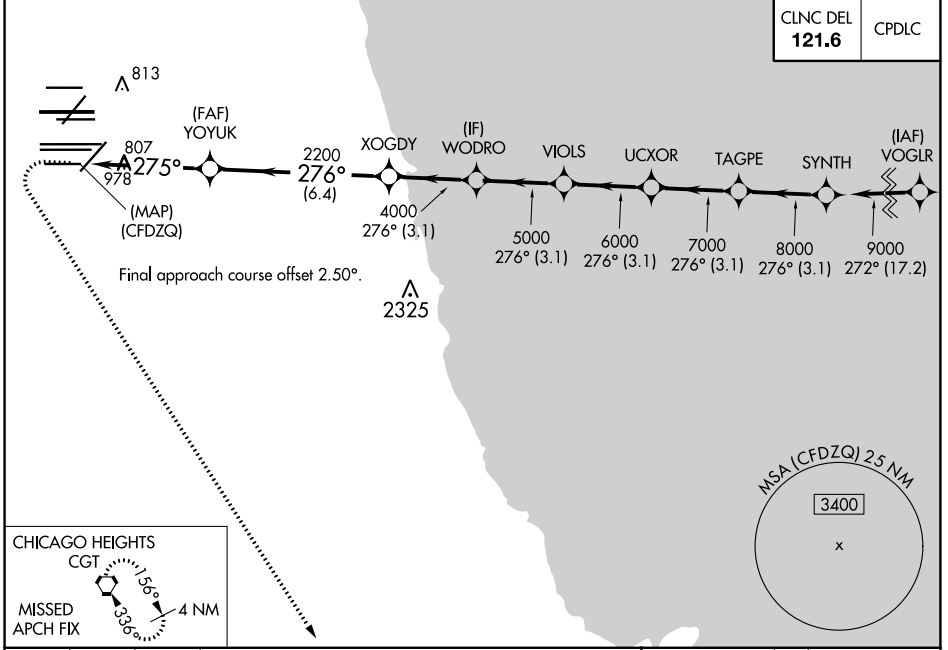


WAAAS CH <b>93839</b> <b>W28E</b>	APP CRS <b>275°</b>	Rwy ldg TDZE <b>667</b> Apt Elev <b>680</b>	<b>7500</b>
---	------------------------	---	-------------

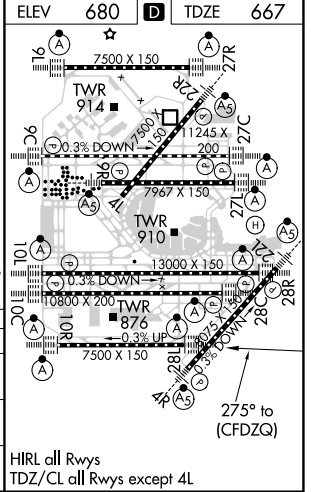
# RNAV (GPS) Y RWY 28L

CHICAGO O'HARE INTL (ORD)

RNP APCH: Simultaneous approach authorized. LNAV procedure NA during simultaneous operations. For uncompensated Baro-VNAV systems, LNAV/VNAV NA below -19°C or above 54°C. Use of FD or AP required during simultaneous operations.		ALSF-2 	MISSED APPROACH: Climb to 1200 then climbing left turn to 4000 direct CGT VORTAC and hold.
D-ATIS <b>135.4</b> <b>282.225</b>	CHICAGO APP CON <b>119.0 292.125</b>	O'HARE TOWERS <b>128.15 348.0</b> (Rwy 9L/27R) <b>133.0 348.0</b> (10R/28L) <b>120.75 121.15 126.9 132.7 348.0</b> (CENTER)	GND CON (TWR CENTER) <b>124.125</b> (TWR NORTH) <b>121.75</b> (OBND) (TWR SOUTH) <b>118.05</b> (TWR SOUTH) <b>121.9</b> (IBND) <b>226.675</b> (ALL TWS)



1200	4000	CGT	SYNTH
*LNAV only			
	YOYUK 2200	XOGDY 4000	WODRO 5000
		VIOLS 6000	UCXOR 7000
			TAGPE 8000
			SYNTH 9000
	1.1	3.6 NM	6.4 NM
		3.1 NM	3.1 NM
		3.1 NM	3.1 NM
		3.1 NM	3.1 NM
		3.1 NM	3.1 NM
			GP 3.00° TCH 55
CATEGORY	A	B	C
LPV DA		917/24	250 (300-1/2)
LNAV/VNAV DA		1090/40	423 (500-3/4)
LNAV MDA	1060/24	393 (400-1/2)	1060/35 393 (400-5/8)



EC-3, 25 FEB 2021 to 25 MAR 2021

EC-3, 25 FEB 2021 to 25 MAR 2021