

WAAS CH 99340 W10E	APP CRS 093°	Rwy Idg TDZE Apt Elev	7500 680 680
--	------------------------	-----------------------------	---

RNAV (GPS) Z RWY 10R

CHICAGO O'HARE INTL (ORD)

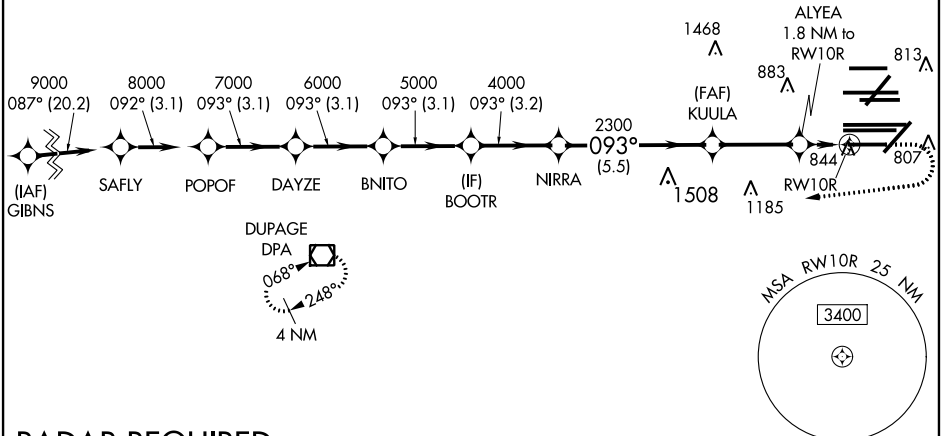
▼ For uncompensated Baro-VNAV systems, LNAV/VNAV NA below -19°C (-2°F) or above 54°C (130°F). Simultaneous approach authorized. Use of FD or AP providing RNAV track guidance required during simultaneous operations. LNAV procedure NA during simultaneous operations. DME/DME RNP-0.3 NA. For inop ALS, increase LNAV Cat C and D visibility to RVR 6000.



MISSED APPROACH: Climb to 1200 then climbing right turn to 4000 direct DPA VOR/DME and hold.

D-ATIS 135.4 282.225	CHICAGO APP CON 119.0 292.125	O'HARE TOWERS (Rwy 9L/27R) 133.0 348.0 (10R/28L) 120.75 121.15 126.9 132.7 348.0 (CENTER)	GND CON (TWR NORTH) 124.125 (TWR SOUTH) 118.05 (ALL TWRs) 226.675	(TWR CENTER) 121.75 (OBND) (IBND) 121.9
--	--	---	--	--

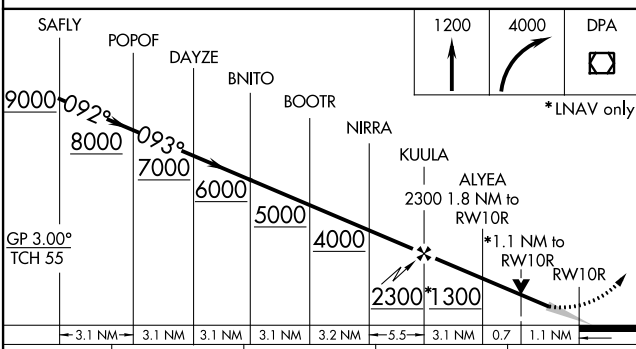
CLNC DEL 121.6	CPDLC
--------------------------	-------



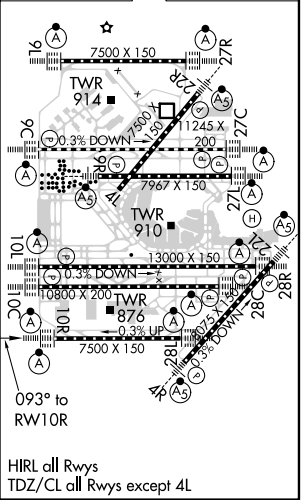
EC-3, 25 FEB 2021 to 25 MAR 2021

EC-3, 25 FEB 2021 to 25 MAR 2021

RADAR REQUIRED



ELEV 680	D TDZE 680
----------	-------------------



CATEGORY	A	B	C	D
LPV DA		881/18	201 (300-½)	
LNAV/VNAV DA		1122/50	442 (500-1)	
LNAV MDA	1100/24	420 (500-½)	1100/40	420 (500-¾)

HIRL all Rwys
TDZ/CL all Rwys except 4L