

VOR/DME BPT 114.5 Chan 92	APP CRS 229°	Rwy Idg 5500 TDZE 13 Apt Elev 13
---	------------------------	---

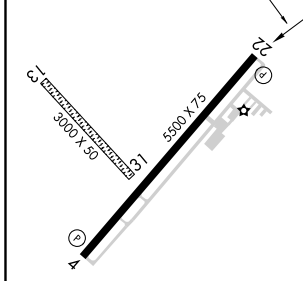
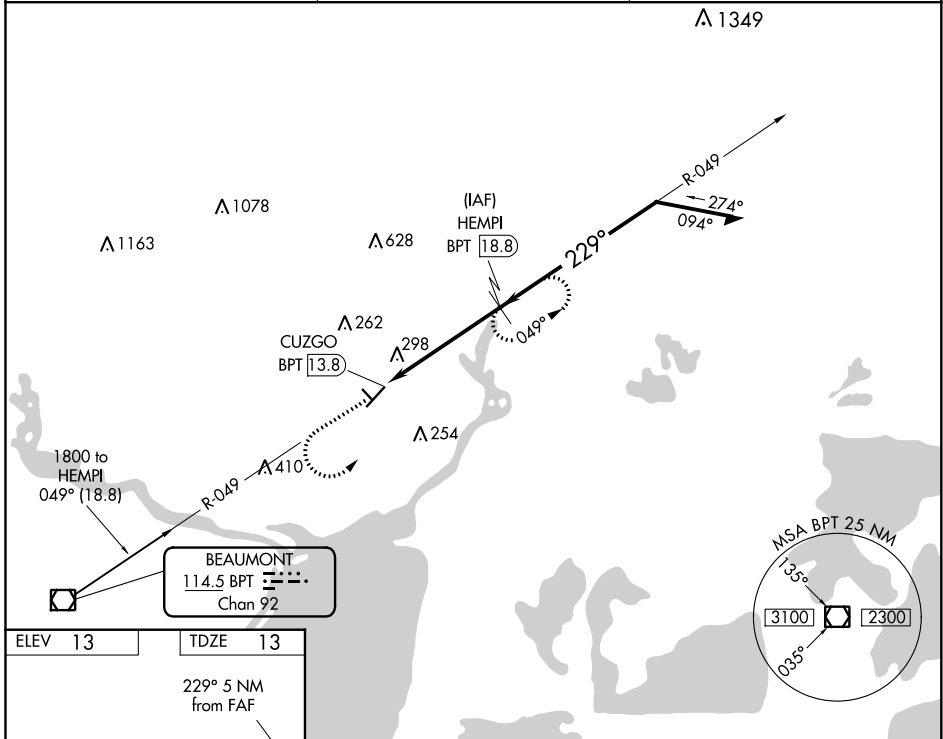
VOR/DME RWY 22

ORANGE COUNTY (OR.G)

⚠ Visibility reduction by helicopters NA. Circling NA to Rwy 13/31. VDP NA when using Jack Brooks Rgnl altimeter setting.
⚠ When local altimeter setting not received, use Jack Brooks Rgnl altimeter setting and increase all MDA 40 feet and increase S-22 and Circling Cat C visibility ¼ mile.

MISSED APPROACH: Climb to 1000 then climbing left turn to 2000 via BPT R-049 to HEMPI/18.8 DME and hold.

AWOS-3 118.975	HOUSTON APP CON 121.3 377.1	UNICOM 122.8 (CTAF)
--------------------------	---------------------------------------	-------------------------------



1000	2000	HEMPI BPT 18.8	VGSi and descent angles not coincident (VGSi Angle 3.00/TCH 21). HEMPI BPT 18.8 Remain within 10 NM
↑	↙	BPT R-049	
		HEMPI BPT 18.8	049°
		CUZGO BPT 13.8	229°
		BPT 15.6	1800

CATEGORY	A	B	C	D
S-22	600-1	587 (600-1)	600-1½ 587 (600-1½)	NA
CIRCLING	660-1	647 (700-1)	660-1¾ 647 (700-1¾)	NA

MIRL Rwy 4-22 **⓪**
 REIL Rwy 4 and 22 **⓪**

SC-5, 25 FEB 2021 to 25 MAR 2021

SC-5, 25 FEB 2021 to 25 MAR 2021