

ILS or LOC RWY 29

WORCESTER RGNL (ORH)

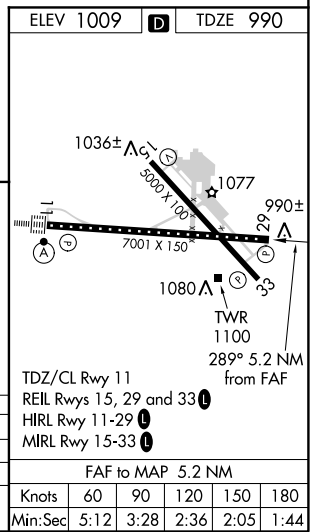
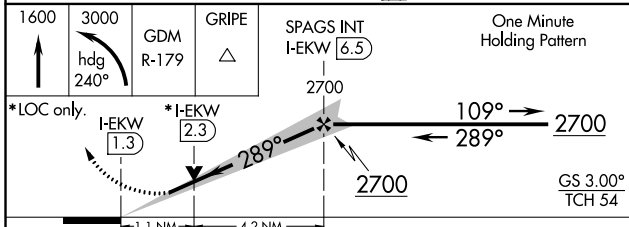
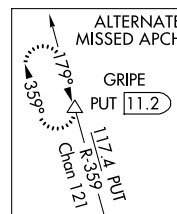
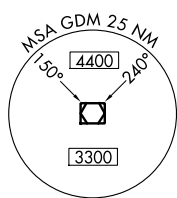
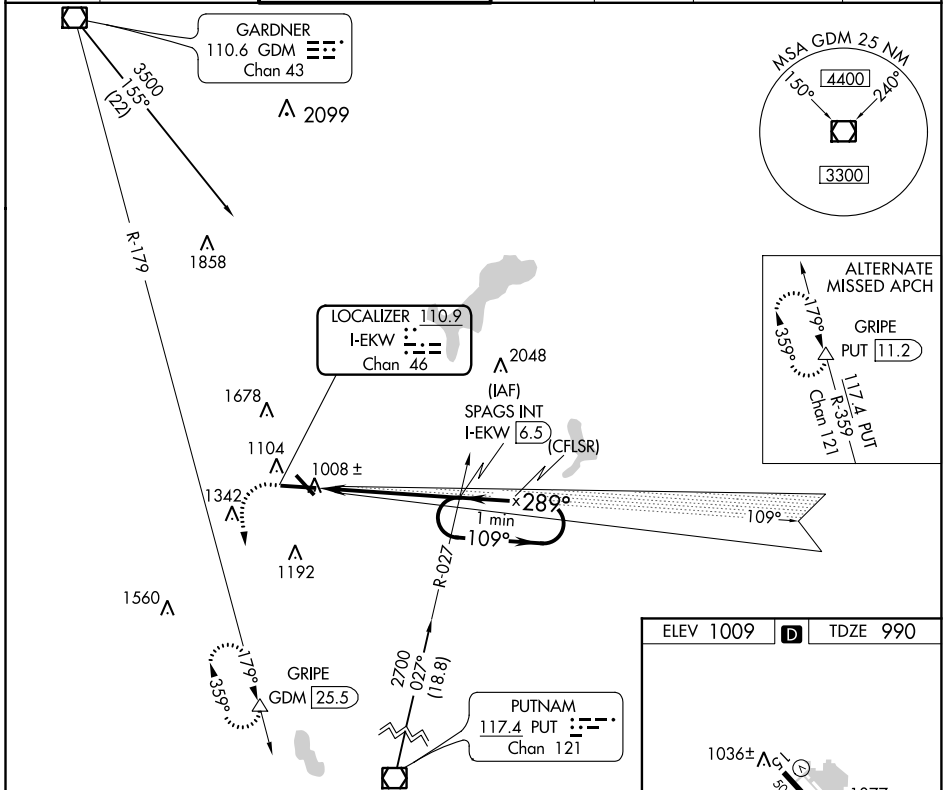
LOC/DME I-EKW 110.9 Chan 46	APP CRS 289°	Rwy ldg TDZE Apt Elev	7001 990 1009
---	------------------------	-----------------------------	--

DME required.

⚠ VDP NA with Bedford altimeter setting. When local altimeter setting not received, use Bedford altimeter setting and increase all DA 189 feet and all MDA 200 feet; increase S-ILS all Cats visibility to 1/4 SM, increase S-LOC Cats C/D visibility to 1/4 SM, and Circling Cat B to 1/4 SM. Autopilot coupled approach NA below 1266 feet.

MISSED APPROACH: Climb to 1600 then climbing left turn to 3000 on heading 240° and on GDM VOR/DME R-179 to GRIPE/GDM 25.5 DME and hold.

ATIS 126.55	YANKEE APP CON 119.0 327.1	WORCESTER TOWER★ 120.5 (CTAF) 263.0	GND CON 123.85	CLNC DEL 128.65	CLNC DEL 119.0 (When twr closed)	UNICOM 122.95
-----------------------	--------------------------------------	---	--------------------------	---------------------------	---	-------------------------



NE-1, 25 FEB 2021 to 25 MAR 2021

NE-1, 25 FEB 2021 to 25 MAR 2021