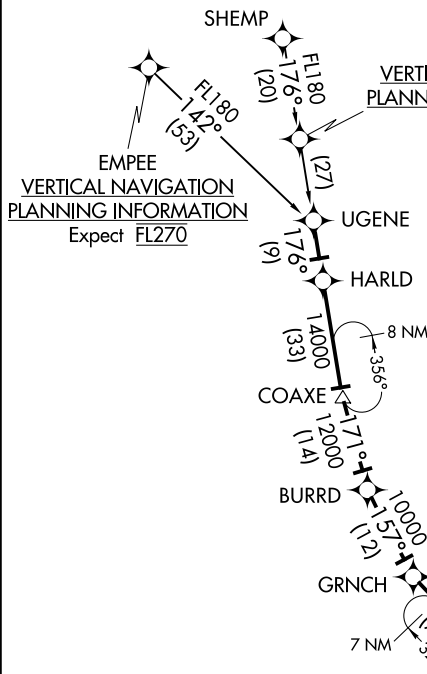


BUGGZ FOUR ARRIVAL (RNAV)

ORLANDO APP CON
128.375 338.2
MCO D-ATIS ARR
121.25



TWETY
VERTICAL NAVIGATION
PLANNING INFORMATION
Expect FL340

VERTICAL NAVIGATION
PLANNING INFORMATION
Expect FL270

NOTE: RADAR required.
NOTE: RNAV 1.
NOTE: DME/DME/IRU or GPS required.
NOTE: Turbojet aircraft only.
NOTE: EMPEE TRANSITION, ATC assigned only.

BUGGZ
VERTICAL NAVIGATION
PLANNING INFORMATION
Expect 12000
Landing South
Expect 250K

BUNIE
VERTICAL NAVIGATION
PLANNING INFORMATION
KMCO Landing South,
Expect RADAR vectors
prior to BUNIE

ARRIVAL ROUTE DESCRIPTION

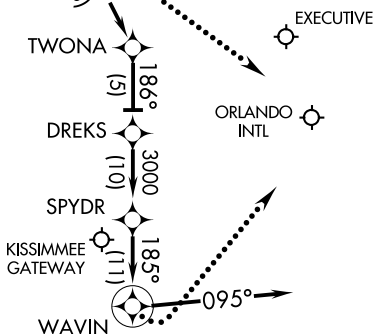
EMPEE TRANSITION (EMPEE.BUGGZ4)
SHEMP TRANSITION (SHEMP.BUGGZ4)

From UGENE on track 176° to HARLD, then on track 176° to COAXE, then on track 171° to BURRD, then on track 157° to GRNCH, then on track 143° to BUGGZ, then on track 134° to DAFIE, then on track 133° to BUNIE, then on track 159° to TWONA, then on track 186° to DREKS, then on track 186° to SPYDR, then on track 185° to WAVIN, then on track 095°.
Expect RADAR vectors to final approach course.

LOST COMMUNICATIONS:

KMCO LANDING NORTH: Continue track to WAVIN, then turn left to intercept the Rwy 36R final approach course.
Conduct approach.

KMCO LANDING SOUTH: Continue track to BUNIE, then turn left to intercept the Rwy 18R final approach course.
Conduct approach.



NOTE: Chart not to scale.

BUGGZ FOUR ARRIVAL (RNAV)

SE-3, 25 FEB 2021 to 25 MAR 2021

SE-3, 25 FEB 2021 to 25 MAR 2021