

LOC I-OSU <b>108.5</b>	APP CRS <b>092°</b>	Rwy Idg TDZE Apt Elev	<b>5004</b> <b>905</b> <b>905</b>
---------------------------	------------------------	-----------------------------	---

# ILS or LOC RWY 9R

OHIO STATE UNIVERSITY (OSU)

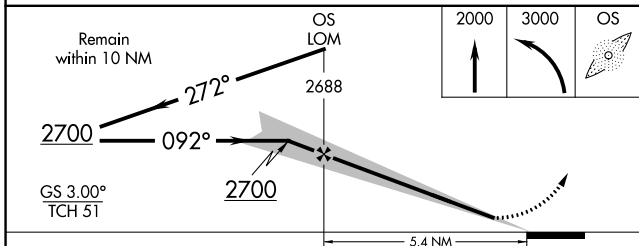
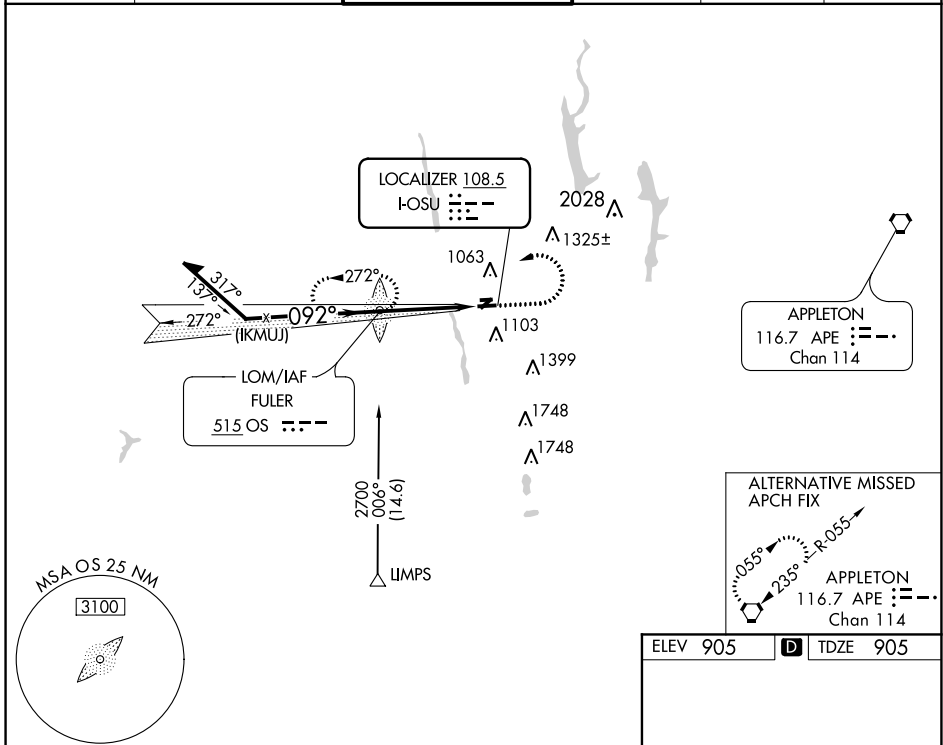
ADF required for procedure entry. ADF required.

When local altimeter setting not received, use John Glenn Columbus Intl altimeter setting and increase all DA 35 feet and all MDA 40 feet. Increase S-LOC 9R Cat C/D and Circling Cat C visibility 1/2 mile. Circling Rwy 23 NA at night.

MALSRL A5

MISSED APPROACH: Climb to 2000 then climbing left turn to 3000 direct FULER LOM and hold.

ATIS <b>121.35</b>	COLUMBUS APP CON <b>125.95 317.775</b>	STATE TOWER ★ <b>118.8</b> (CTAF) <b>254.325</b>	GND CON <b>121.7</b>	CLNC DEL <b>121.7</b>	UNICOM <b>122.95</b>
-----------------------	---	---	-------------------------	--------------------------	-------------------------



ELEV 905	TDZE 905
----------	----------

REIL Rwy 27L  
HIRL Rwy 9R-27L  
MIRL Rwys 9L-27R

FAF to MAP 5.4 NM

Knots	60	90	120	150	180
Min:Sec	5:24	3:36	2:42	2:10	1:48

EC-2, 25 FEB 2021 to 25 MAR 2021

EC-2, 25 FEB 2021 to 25 MAR 2021