

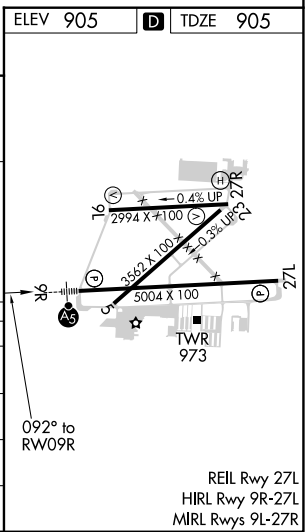
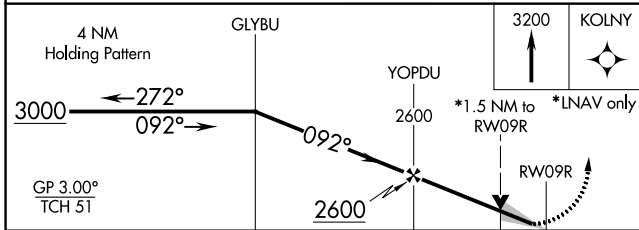
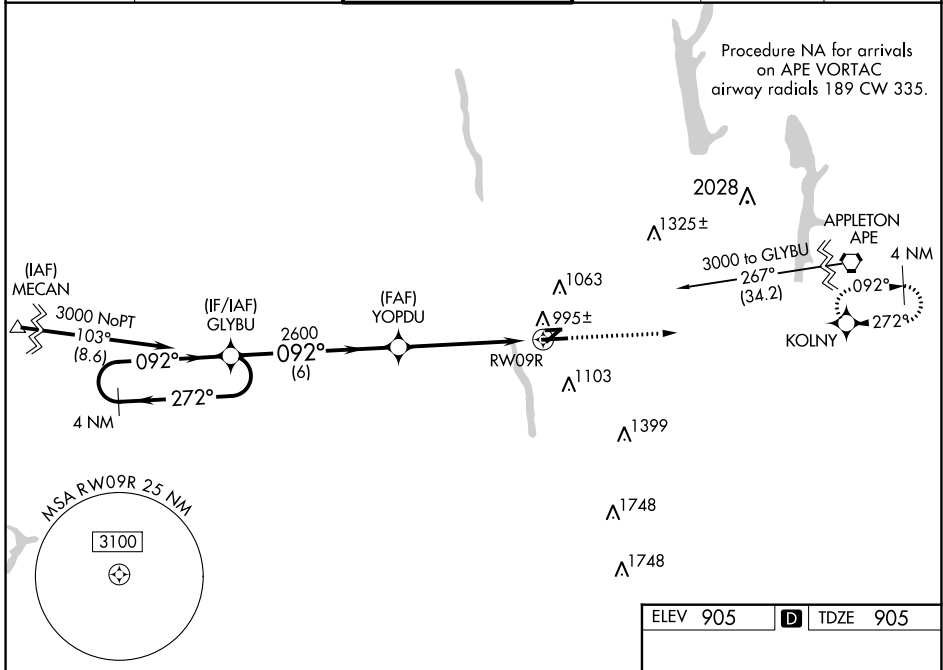
WAAS CH 86420 W09A	APP CRS 092°	Rwy Idg TDZE Apt Elev	5004 905 905
--	------------------------	-----------------------------	---

RNAV (GPS) RWY 9R

OHIO STATE UNIVERSITY (OSU)

RNP APCH.		MALSR AS	MISSED APPROACH: Climb to 3200 direct KOLNY and hold.
<p>▼ Baro-VNAV NA when using John Glenn Columbus Intl altimeter setting. For uncompensated Baro-VNAV systems, LNAV/VNAV NA below -16°C or above 38°C. VDP NA with John Glenn Columbus Intl altimeter setting. When local altimeter setting not received, use John Glenn Columbus Intl altimeter setting and increase all DA 35 feet and all MDA 40 feet.</p> <p>▲ Increase LNAV Cat C/D visibility 1/8 mile. Circling Rwy 23 NA at night. For inop ALS, increase LNAV/VNAV visibility all Cats to 3/8 SM.</p>			

ATIS 121.35	COLUMBUS APP CON 125.95 317.775	STATE TOWER ★ 118.8 (CTAF) 254.325	GND CON 121.7	CLNC DEL 121.7	UNICOM 122.95
-----------------------	---	--	-------------------------	--------------------------	-------------------------



CATEGORY	A	B	C	D
LPV DA		1105-1/2	200 (200-1/2)	
LNAV/VNAV DA		1192-1/2	287 (300-1/2)	
LNAV MDA	1420-1/2 515 (600-1/2)		1420-1 515 (600-1)	
CIRCLING	1420-1 515 (600-1)		1420-1 1/2 515 (600-1 1/2)	1460-2 555 (600-2)

EC-2, 25 FEB 2021 to 25 MAR 2021

EC-2, 25 FEB 2021 to 25 MAR 2021