

RNAV (GPS) RWY 11

WORTHINGTON MUNI (OTG)

WAAS CH 58230 W11A	APP CRS 113°	Rwy Idg TDZE 1574 Apt Elev 1574	5500
--	------------------------	---	-------------

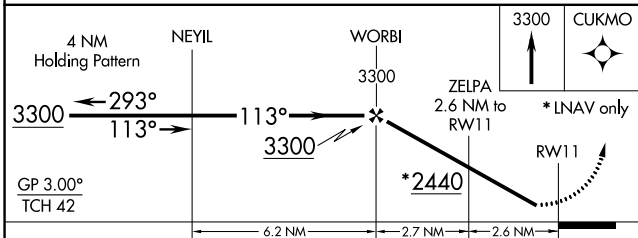
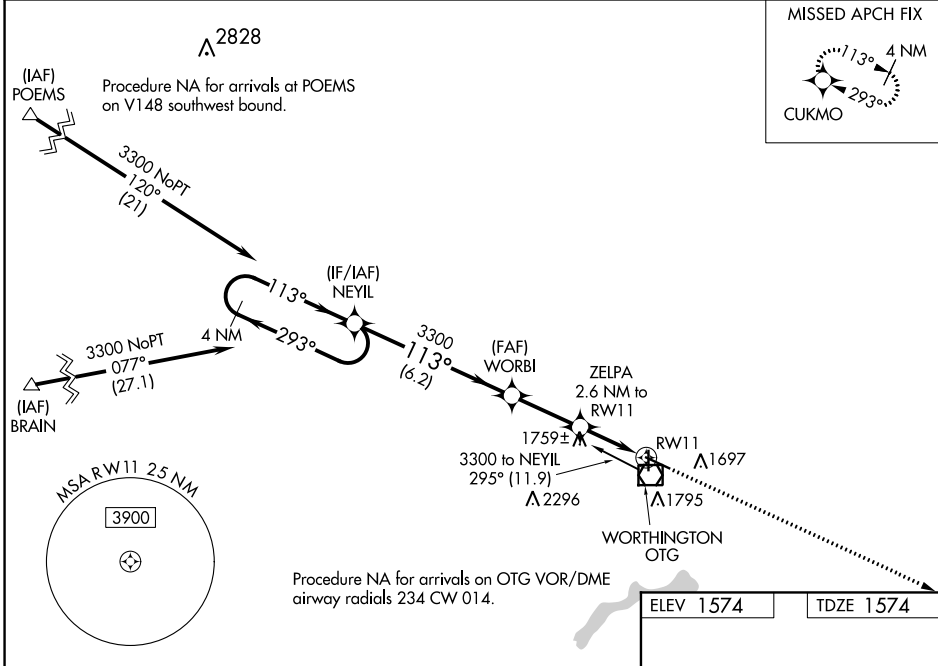
⚠ Baro-VNAV NA when using Jackson altimeter setting. For uncompensated Baro-VNAV systems, LNAV/VNAV NA below -18°C (0°F) or above 54°C (130°F). When VGSJ inop, Straight-in/Circling Rwy 11 procedure NA at night. DME/DME RNP-0.3 NA. Visibility reduction by helicopters NA. When local altimeter setting not received, use Jackson altimeter setting and increase all DA 78 feet, all MDA 80 feet, increase LPV and LNAV/VNAV all Cats and LNAV Cats C/D visibility 1/8 mile and Circling Cat C visibility 1/4 mile.

MISSED APPROACH: Climb to 3300 direct CUKMO and hold.

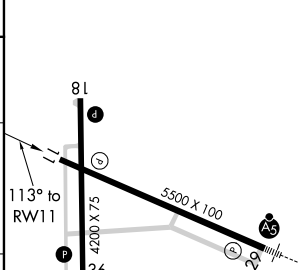
AWOS-3PT
121.075

MINNEAPOLIS CENTER
132.05 317.4

UNICOM
122.8 (CTAF) 0



ELEV 1574	TDZE 1574
-----------	-----------



CATEGORY	A	B	C	D
LPV DA		1824-1	250 (300-1)	
LNAV/VNAV DA		1826-1	252 (300-1)	
LNAV MDA	2020-1 446 (500-1)		2020-1 3/8 446 (500-1 3/8)	
CIRCLING	2100-1 526 (600-1)		2100-1 1/2 526 (600-1 1/2)	2140-2 566 (600-2)

MIRL Rwy 18-36 0

HIRL Rwy 11-29 0

REIL Rws 11, 18, and 36 0

NC-1, 25 FEB 2021 to 25 MAR 2021

NC-1, 25 FEB 2021 to 25 MAR 2021