

WAAS CH 93830 W18A	APP CRS 178°	Rwy Idg TDZE Apt Elev	4200 1574 1574
--	------------------------	-----------------------------	---

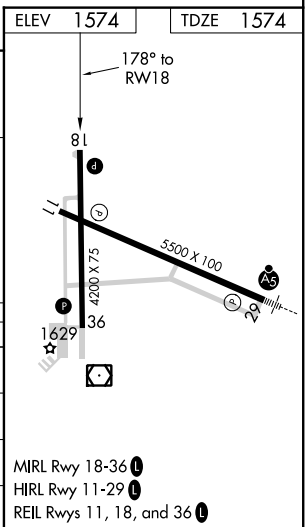
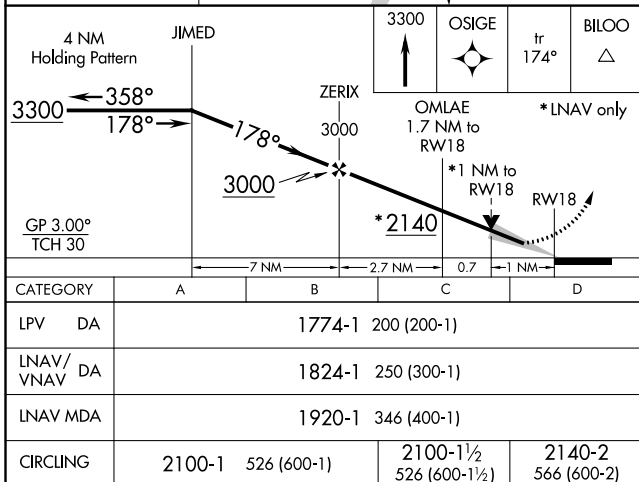
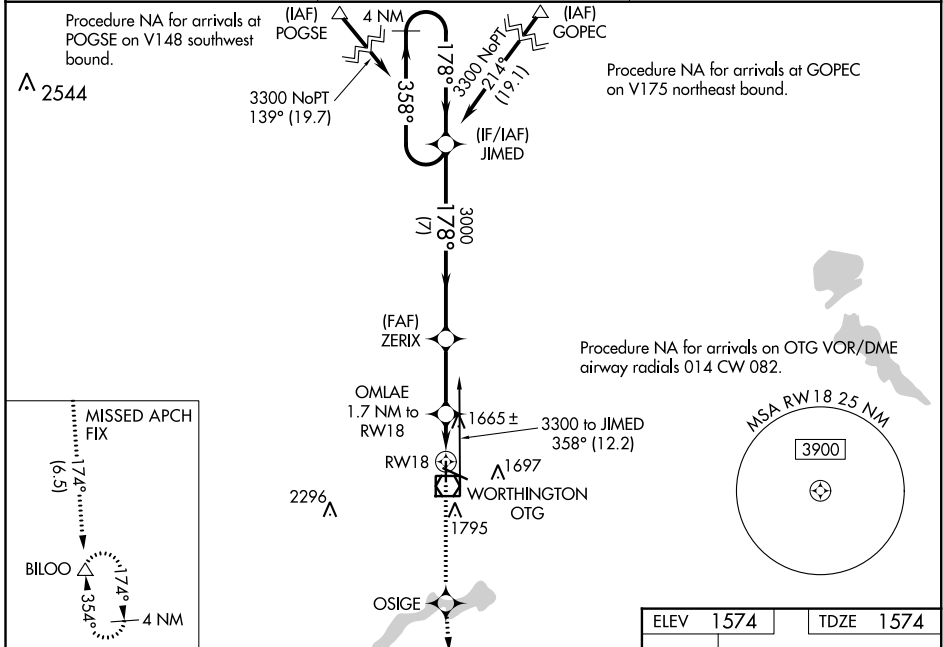
RNAV (GPS) RWY 18

WORTHINGTON MUNI (OTG)

⚠ Baro-VNAV NA when using Jackson altimeter setting. For uncompensated Baro-VNAV systems, LNAV/VNAV NA below -18°C (0°F) or above 54°C (130°F). DME/DME RNP-0.3 NA. VDP NA with Jackson altimeter setting. When local altimeter setting not received, use Jackson altimeter setting and increase all DA 78 feet and all MDA 80 feet, increase LPV and LNAV/VNAV all Cats, LNAV Cat C/D, and Circling Cat C visibility ¼ mile.

⚠ MISSED APPROACH: Climb to 3300 direct OSIGE and on track 174° to BILOO and hold.

AWOS-3PT 121.075	MINNEAPOLIS CENTER 132.05 317.4	UNICOM 122.8 (CTAF) 0
----------------------------	---	---------------------------------



NC-1, 25 FEB 2021 to 25 MAR 2021

NC-1, 25 FEB 2021 to 25 MAR 2021