

| | | | |
|--|------------------------|-----------------------------|---|
| WAAS CH 45930 W29A | APP CRS 293° | Rwy Idg TDZE Apt Elev | 5500 1570 1574 |
|--|------------------------|-----------------------------|---|

RNAV (GPS) RWY 29

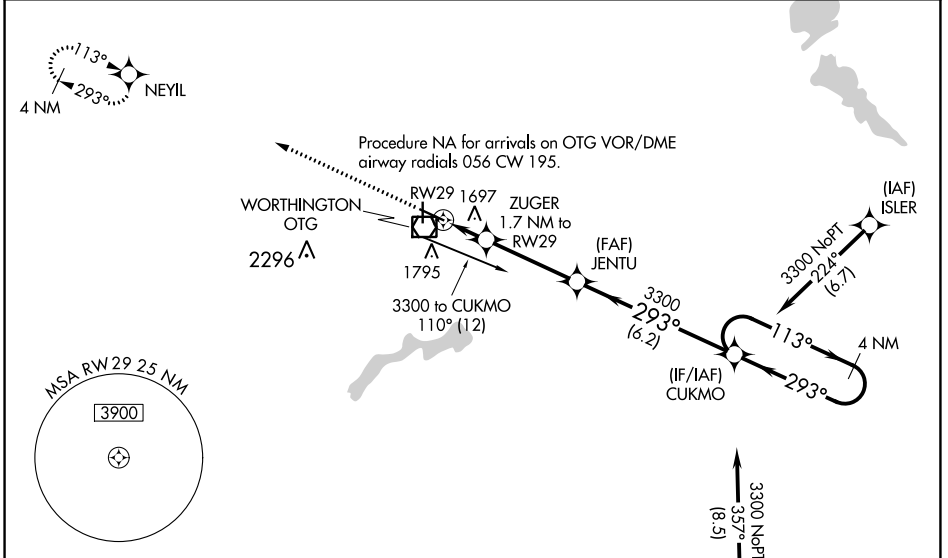
WORTHINGTON MUNI (OTG)

▼ Baro-VNAV NA when using Jackson altimeter setting. For uncompensated Baro-VNAV systems, LNAV/VNAV NA below -18°C (0°F) or above 54°C (130°F). DME/DME RNP-0,3 NA. VDP NA with Jackson altimeter setting. When local altimeter setting not received, use Jackson altimeter setting and increase all DA 78 feet and all MDA 80 feet: increase LNAV/VNAV all Cats visibility ¼ mile, LNAV Cats C/D visibility ⅓ mile, and Circling Cat C visibility ¼ mile. For inoperative MALSR, when using Jackson altimeter setting, increase LPV all Cats visibility to ⅓ mile.

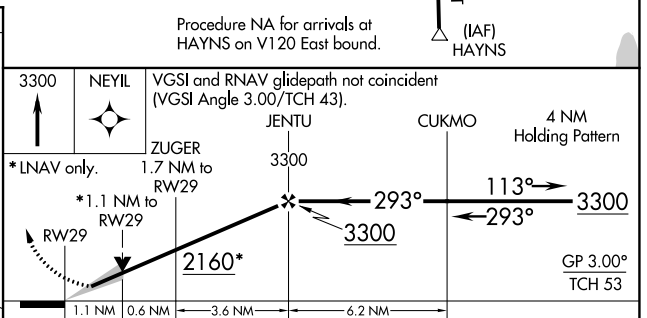
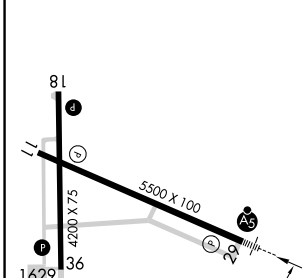
MALSR

MISSED APPROACH:
Climb to 3300 direct
NEYIL and hold.

| | | |
|----------------------------|---|---------------------------------|
| AWOS-3PT 121.075 | MINNEAPOLIS CENTER 132.05 317.4 | UNICOM 122.8 (CTAF) 0 |
|----------------------------|---|---------------------------------|



| | |
|-----------|-----------|
| ELEV 1574 | TDZE 1570 |
|-----------|-----------|



| CATEGORY | A | B | C | D |
|--------------|--------|-------------|-------------|-----------------------|
| LPV DA | 1770-½ | | 200 (200-½) | |
| LNAV/VNAV DA | 1992-1 | | 422 (500-1) | |
| LNAV MDA | 1960-½ | 390 (400-½) | 1960-⅝ | 390 (400-⅝) |
| CIRCLING | 2100-1 | 526 (600-1) | 2100-1½ | 2140-2 566 (600-2) |

MIRL Rwy 18-36 0
HIRL Rwy 11-29 0
REIL Rws 11, 18, and 36 0

NC-1, 25 FEB 2021 to 25 MAR 2021

NC-1, 25 FEB 2021 to 25 MAR 2021