

APP CRS	Rwy Idg	5002
220°	TDZE	755
	Apt Elev	757

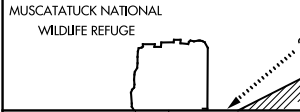
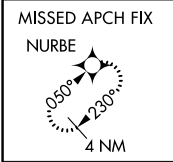
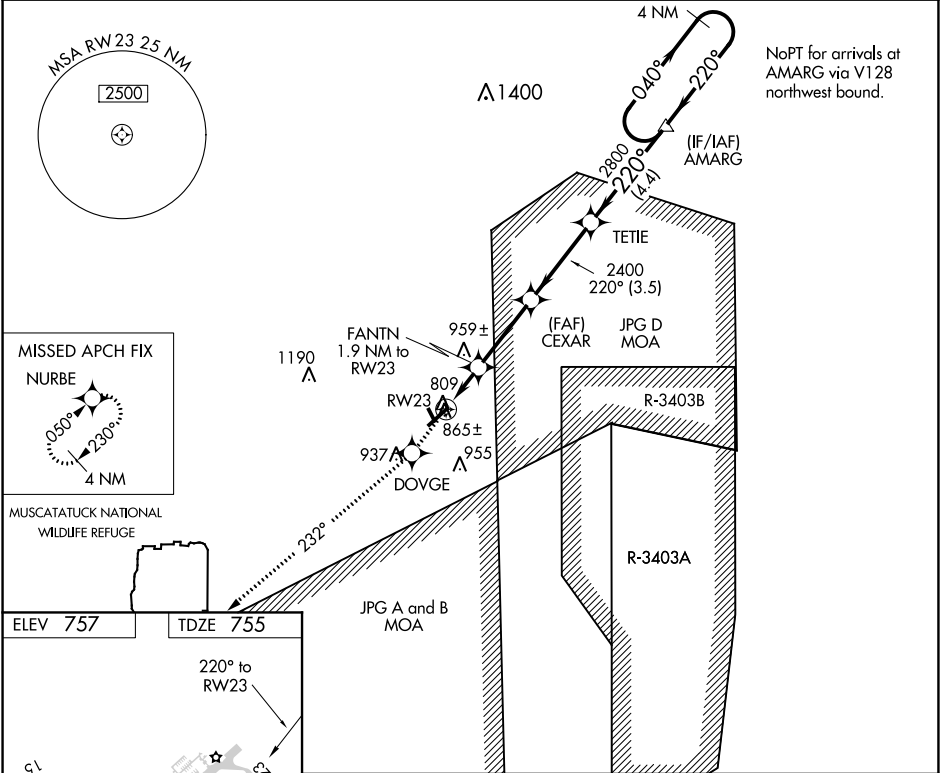
RNAV (GPS) Y RWY 23

NORTH VERNON (OVO)

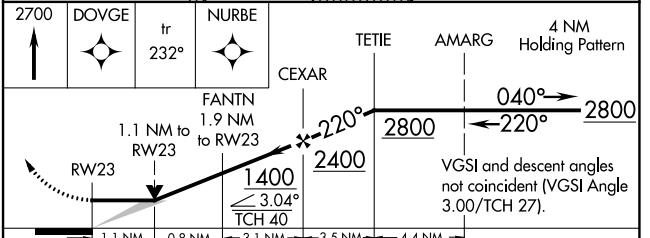
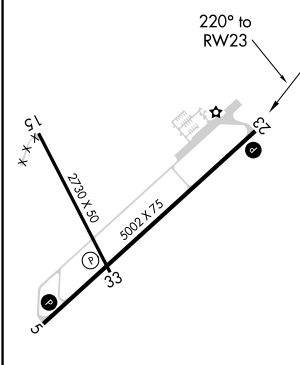
NA DME/DME RNP-0.3 NA.
 When local altimeter setting not received, use Shelbyville altimeter setting and increase all MDA 100 feet, increase LNAV Cat C visibility ¼ mile.
 VDP NA when using Shelbyville altimeter setting.

MISSED APPROACH:
 Climb to 2700 direct DOVGE and via track 232° to NURBE and hold.

AWOS-3 120.625	INDIANAPOLIS CENTER 124.775 269.45	UNICOM 122.7 (CTAF) 0
--------------------------	----------------------------------------------	---------------------------------



ELEV 757	TDZE 755
----------	----------



CATEGORY	A	B	C	D
LNAV MDA	1120-1 365 (400-1)			NA
CIRCLING	1180-1 423 (500-1)	1220-1 463 (500-1)	1220-1½ 463 (500-1½)	NA

EC-2, 25 FEB 2021 to 25 MAR 2021

EC-2, 25 FEB 2021 to 25 MAR 2021