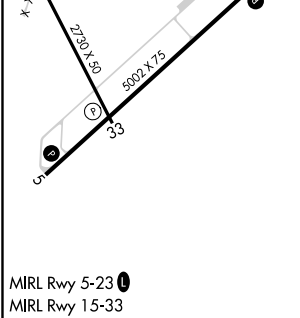
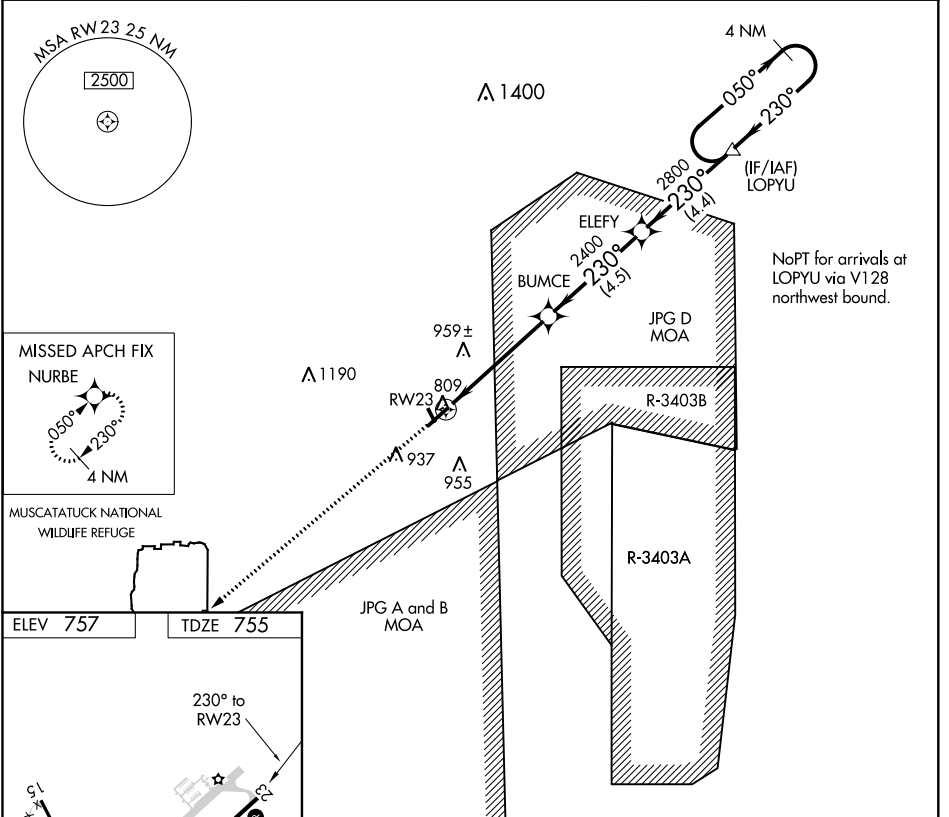


WAAS CH 63113 W23A	APP CRS 230°	Rwy Idg TDZE Apt Elev	5002 755 757
--	------------------------	-----------------------------	---

RNAV (GPS) Z RWY 23

NORTH VERNON (OVO)

<p>NA DME/DME RNP-0.3 NA. When local altimeter setting not received, use Shelbyville altimeter setting and increase all DA 84 feet and all visibility 1/2 mile.</p>	MISSED APPROACH: Climb to 2700 direct NURBE and hold.	
AWOS-3 120.625	INDIANAPOLIS CENTER 124.775 269.45	UNICOM 122.7 (CTAF) 0



2700	NURBE	VGSi and RNAV glidepath not coincident (VGSi Angle 3.00/TCH 27).		4 NM Holding Pattern
	BUMCE	ELEFY	LOPYU	
	RWY 23	2400	2800	2800
		230°	230°	050°
				GP 3.00° TCH 40
	5 NM	4.5 NM	4.4 NM	
CATEGORY	A	B	C	D
LPV DA	1005-1 250 (300-1)			NA

EC-2, 25 FEB 2021 to 25 MAR 2021

EC-2, 25 FEB 2021 to 25 MAR 2021