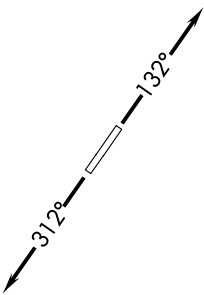


EC-1, 25 FEB 2021 to 25 MAR 2021

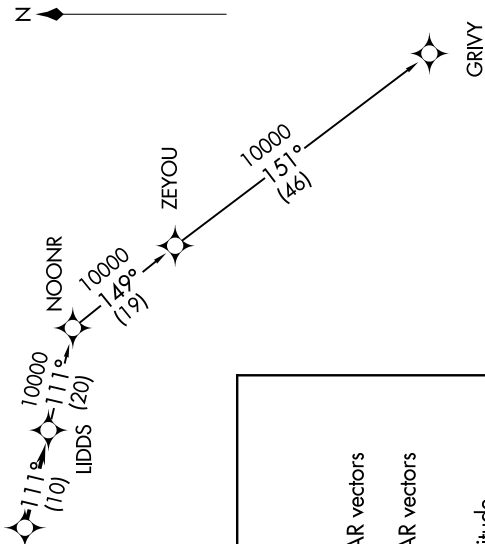
**TOP ALTITUDE:
ASSIGNED BY ATC**

TAKEOFF MINIMUMS:
Standard.



AWOS-3
118.875
CINC DEL
121.725
CTAF
123.0
DETROIT DEP CON
132.35 284.0

KZLOV
15000
4000



NOTE: RNAV 1.
NOTE: RADAR required.
NOTE: DME/DME/IRU or GPS required.
NOTE: Turbopjet departures at/above 10000, maintain 280K until advised by ATC.

DEPARTURE ROUTE DESCRIPTION

TAKEOFF RUNWAY 13: Climb on heading 132° or as assigned for RADAR vectors to cross KZLOV between 4000 and 15000, thence....
TAKEOFF RUNWAY 31: Climb on heading 312° or as assigned for RADAR vectors to cross KZLOV between 4000 and 15000, thence....
....on track 111° to LIDDS, then on (transition). Maintain ATC assigned altitude, expect filed altitude 10 minutes after departure.

GRIVY TRANSITION (LIDDS2.GRIVY):

NOTE: Chart not to scale.

EC-1, 25 FEB 2021 to 25 MAR 2021