

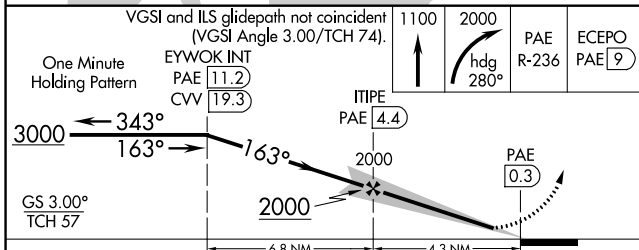
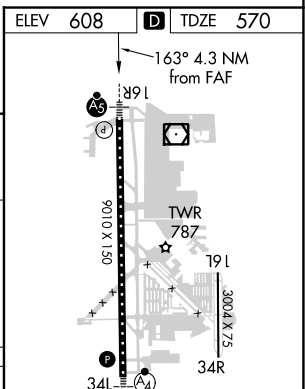
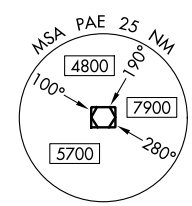
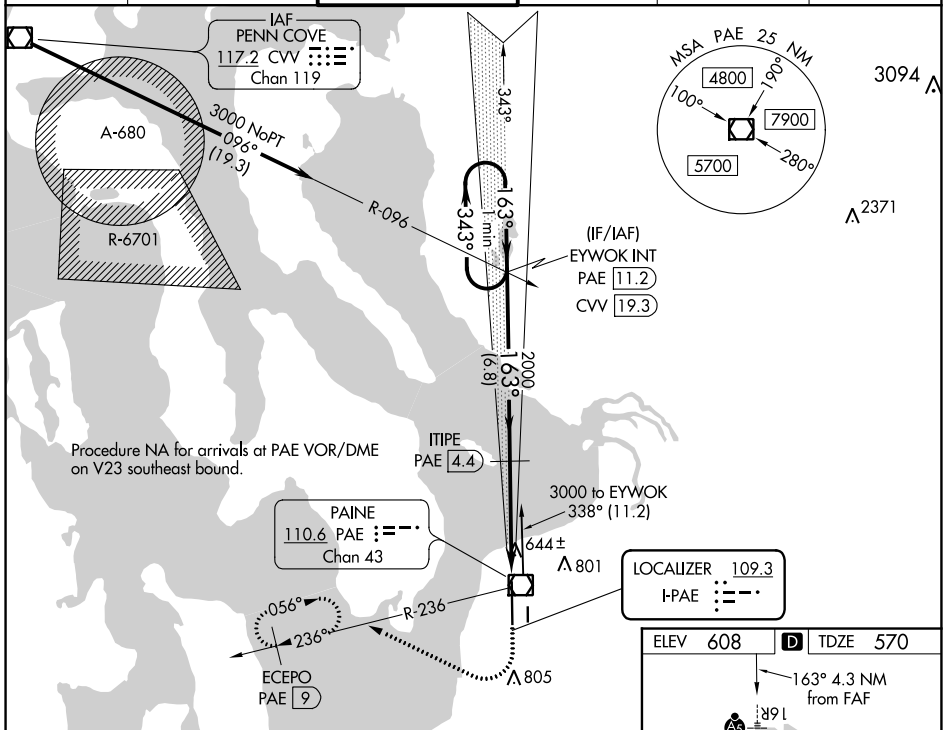
LOC I-PAE <b>109.3</b>	APP CRS <b>163°</b>	Rwy Idg <b>9010</b>
		TDZE <b>570</b>
		Apt Elev <b>608</b>

# ILS Y or LOC Y RWY 16R

SNOHOMISH COUNTY (PAINE FIELD) (P.A.E)

<p><b>▼</b> Circling Rwy 34R NA at night. DME required. DME from PAE VOR/DME. Simultaneous reception of I-PAE and PAE DME required.</p>	<p><b>▲</b> MALSR</p>	<p>MISSED APPROACH: Climb to 1100 then climbing right turn to 2000 on heading 280° and PAE VOR/DME R-236 to ECEPO/PAE 9 DME and hold.</p>

ATIS <b>128.65</b>	SEATTLE APP CON <b>128.5 306.9</b>	PAINE TOWER ★ <b>132.95 (CTAF) 0 256.7</b>	GND CON <b>121.8 339.8</b>	CLNC DEL <b>127.175</b>	UNICOM <b>122.95</b>
-----------------------	---------------------------------------	---	-------------------------------	----------------------------	-------------------------



CATEGORY	A	B	C	D
S-ILS 16R	770/18	200 (200-½)		NA
S-LOC 16R	940/24	370 (400-½)		NA
<b>C</b> CIRCLING	1100-1	492 (500-1)		NA

TDZ/CL Rwy 16R  
HIRL Rwy 16R-34L  
REIL Rws 16L and 34R  
MIRL Rws 11-29 and 16L-34R

NW-1, 25 FEB 2021 to 25 MAR 2021

NW-1, 25 FEB 2021 to 25 MAR 2021