
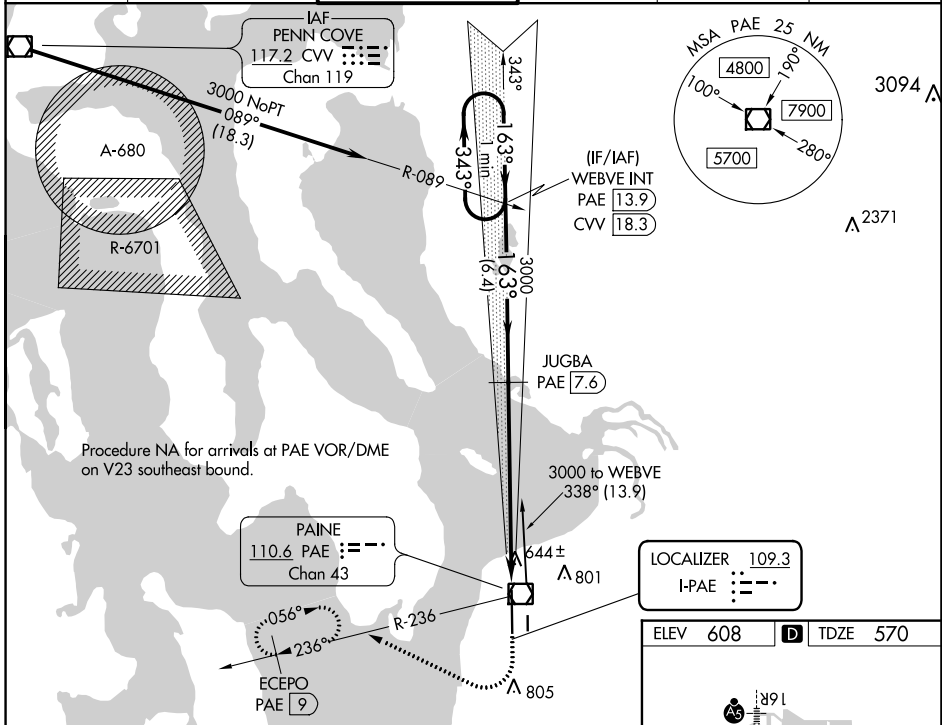


LOC I-PAE <b>109.3</b>	APP CRS <b>163°</b>	Rwy Idg TDZE Apt Elev	<b>9010</b> <b>570</b> <b>608</b>
---------------------------	------------------------	-----------------------------	---

**ILS Z RWY 16R (SA CAT II)**  
SNOHOMISH COUNTY (PAINE FIELD) (PAE)

<p><b>▼</b> DME required. Reduced Lighting: Requires specific OPSPEC, MSPEC, or LOA approval and use of autoland or HUD to touchdown.  <b>▲</b> DME from PAE VOR/DME. Simultaneous reception of I-PAE and PAE DME required. Procedure NA when control tower closed.</p>	<p>MALSRS  </p>	<p>MISSED APPROACH: Climb to 1100 then climbing right turn to 3000 on heading 280° and PAE VOR/DME R-236 to ECEPO/PAE 9 DME and hold, continue climb-in-hold to 3000.</p>
---	--	---

ATIS <b>128.65</b>	SEATTLE APP CON <b>128.5 306.9</b>	PAINE TOWER ★ <b>132.95 (CTAF) 0 256.7</b>	GND CON <b>121.8 339.8</b>	CLNC DEL <b>127.175</b>	UNICOM <b>122.95</b>
-----------------------	---------------------------------------	---	-------------------------------	----------------------------	-------------------------

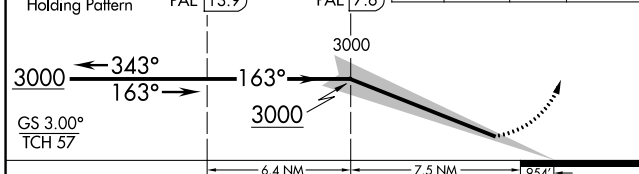


Procedure NA for arrivals at PAE VOR/DME on V23 southeast bound.

PAINE  
110.6 PAE  
Chan 43

LOCALIZER 109.3  
I-PAE

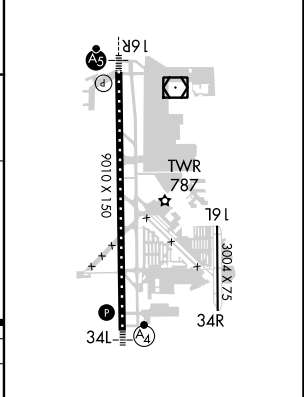
VGS1 and ILS glidepath not coincident (VGS1 Angle 3.00/TCH 74).							
One Minute Holding Pattern	WEBVE INT PAE (13.9)	JUGBA PAE (7.6)	<table border="1"> <tr> <td>1100</td> <td>3000</td> <td>PAE R-236</td> <td>ECEPO PAE (9)</td> </tr> </table>	1100	3000	PAE R-236	ECEPO PAE (9)
1100	3000	PAE R-236	ECEPO PAE (9)				



CATEGORY	A	B	C	D
S-ILS 16R	RA 116/12 100 DA 670			

**SA CATEGORY II ILS-SPECIAL AIRCREW & AIRCRAFT CERTIFICATION REQUIRED**

ELEV 608	D	TDZE 570
----------	---	----------



TDZ/CL Rwy 16R  
HIRL Rwy 16R-34L  
REIL Rws 16L and 34R  
MRL Rws 11-29 and 16L-34R

NW-1, 25 FEB 2021 to 25 MAR 2021

NW-1, 25 FEB 2021 to 25 MAR 2021