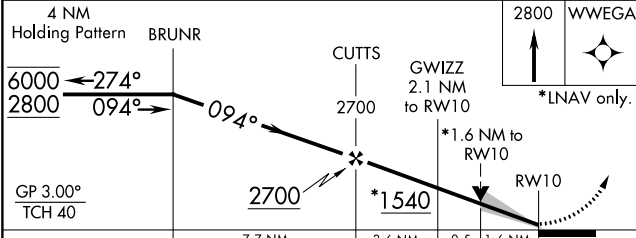
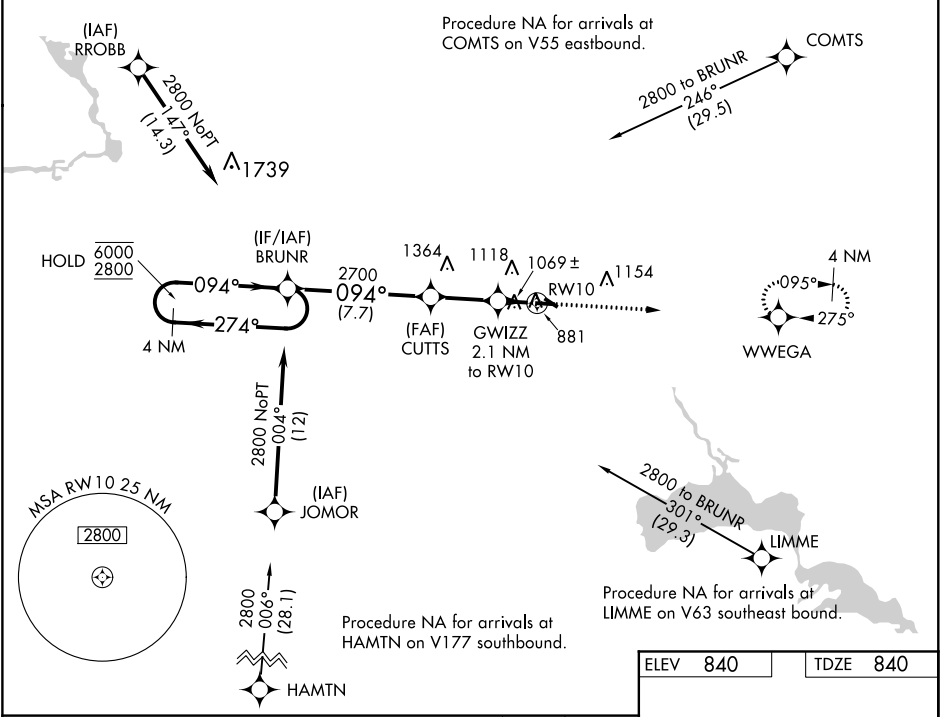


WAAS CH 63120 W10A	APP CRS 094°	Rwy Idg TDZE Apt Elev	5200 840 840
--	------------------------	-----------------------------	---

RNAV (GPS) RWY 10

WAUPACA MUNI (PCZ)

RNP APCH.		MISSED APPROACH: Climb to 2800 direct WWEGA and hold.
<p>▽ Circling to Rwy 28 NA at night. For uncompensated Baro-VNAV systems, LNAV/VNAV NA below -16°C or above 54°C.</p> <p>▲</p>		
AWOS-3 118.625	MINNEAPOLIS CENTER 124.4 317.7	UNICOM 122.8 (CTAF) 0



ELEV 840	TDZE 840
<p>REIL Rwy 10 and 28 0</p> <p>MIRL Rwy 10-28 and 13-31 0</p>	

CATEGORY	A	B	C	D
LPV DA		1090-7/8	250 (300-7/8)	
LNAV/VNAV DA		1384-17/8	544 (600-17/8)	
LNAV MDA	1380-1	540 (600-1)	1380-1 1/2	540 (600-1 1/2)
C CIRCLING	1380-1 540 (600-1)	1420-1 580 (600-1)	1420-1 1/2 580 (600-1 1/2)	1500-2 660 (700-2)

EC-3, 25 FEB 2021 to 25 MAR 2021

EC-3, 25 FEB 2021 to 25 MAR 2021