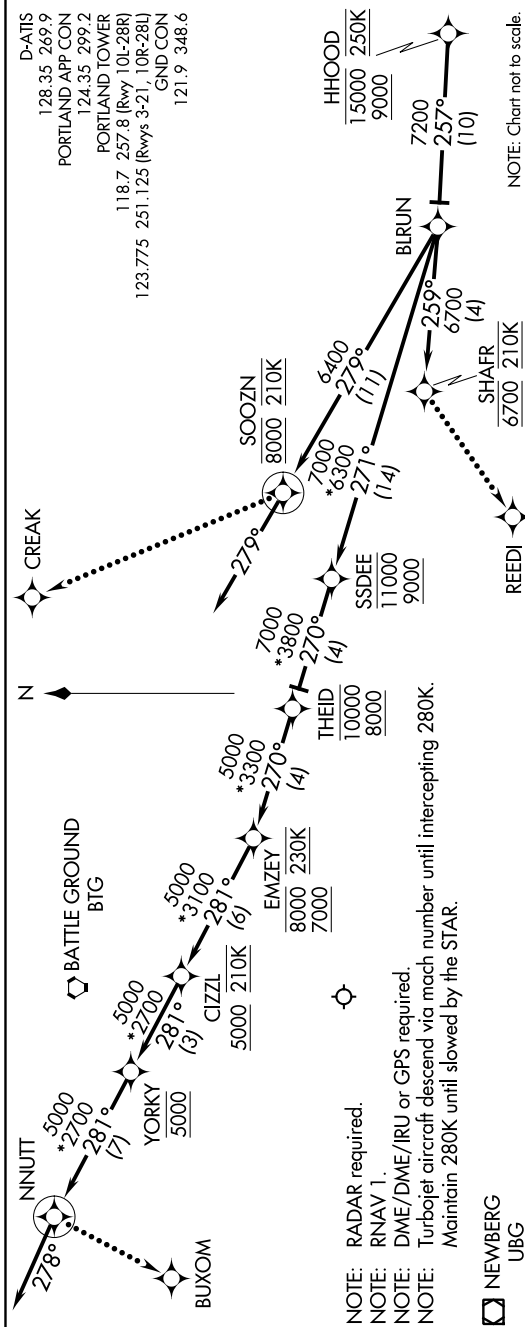


HHOOD FOUR ARRIVAL (RNAV) Arrival Routes

NW-1, 25 FEB 2021 to 25 MAR 2021



ARRIVAL ROUTE DESCRIPTION

From HHOOD on track 257° to BIRUN, thence . . .

LANDING RUNWAYS 10L/R: From BIRUN on track 271° to cross SSDEE between 9000 and 11000, then on track 270° to cross THEID between 8000 and 10000, then on track 270° to cross EMZEY between 7000 and 8000 and at 230K, then on track 281° to cross CIZZL at or above 5000 and at 210K, then on track 281° to cross YORKY at 5000, then on track 281° to NNUTT, then on track 278°. Expect RADAR vectors to final approach course.

LANDING RUNWAY 21: From BIRUN on track 279° to cross SOOZN at 8000 and at 210K, then on track 279°. Expect RADAR vectors to final approach course.

LANDING RUNWAYS 28L/R: From BIRUN on track 259° to cross SHAFR at 6700 and at 210K. Expect RNAV (RNP)/ILS/VISUAL approach as assigned by ATC.

LOST COMMUNICATIONS

LANDING RUNWAY 10: At NNUTT, turn left direct to BUXOM and execute ILS RWY 10L approach.

LANDING RUNWAY 21: At SOOZN turn right direct to CREAK and execute LOC/DME RWY 21 approach.

LANDING RUNWAY 28: At SHAFR, turn left direct to REEDI and execute ILS RWY 28R approach.

NW-1, 25 FEB 2021 to 25 MAR 2021