

HI-TACAN RWY 10R

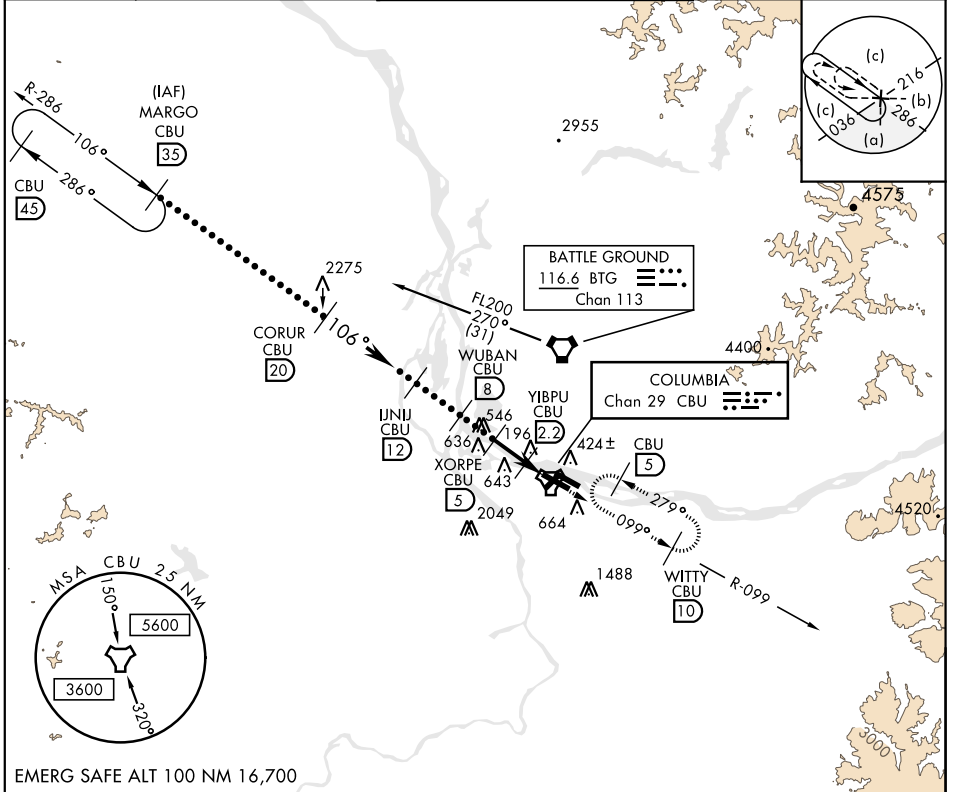
TACAN CBU Chan 29	APCH CRS 106°	Rwy ldg 11,000 TDZE 24 Arprt Elev 31
----------------------	------------------	--

JAL-330 [USAF]

PORTLAND INTL (KPDX)

<p>▼ * When ALS inop, increase CAT C RVR to 50 and vis to 1½ miles, CAT DE vis to 1¼ miles.</p> <p>** When VGSI rwy 28R inop, circling rwy 28R NA at night.</p>	<p>ALSF-2</p>	<p>MISSED APPROACH: Climb to 4000 via CBU TACAN R-099 to WITTY/CBU 10 DME and hold, continue climb in holding.</p>
---	---------------	--

<p>ATIS</p> <p>128.35 269.9</p>	<p>PORTLAND APP CON</p> <p>118.1 284.6 (100°-279°) 124.35 299.2 (280°-099°)</p>	<p>PORTLAND TOWER</p> <p>118.7 257.8 Rwy 10L-28R 123.775 251.125 Rwy 3-21, 10R-28L</p>	<p>GND CON</p> <p>121.9 348.6</p>	<p>CLNC DEL</p> <p>120.125 318.1</p>
---------------------------------	---	--	-----------------------------------	--------------------------------------



NW-1, 25 FEB 2021 to 25 MAR 2021

NW-1, 25 FEB 2021 to 25 MAR 2021

	MARGO R-286 (35)	CORUR (20)	UNJU (12)	WUBAN (8)	XORPE (5)	YIBPU (2.2)	JURUL (0.3)	TACAN	WITTY CBU (10)	
	FL200	7500	3600	2500	1600	620				
	EMERG SAFE ALT 100 NM 16,700									
	VGSI and descent angles not coincident.								ELEV 31	TDZE 24
CATEGORY	C		D		E					
S-10R *	460/40 436 (500-¾)		460/50 436 (500-1)							
CIRCLING **	760-2 729 (800-2)		1000-3 969 (1000-3)		1160-3 1129 (1200-3)					

PORTLAND, OREGON 45°35'N-122°36'W PORTLAND INTL (KPDX)

Amtd 1 18OCT12

HI-TACAN RWY 10R

