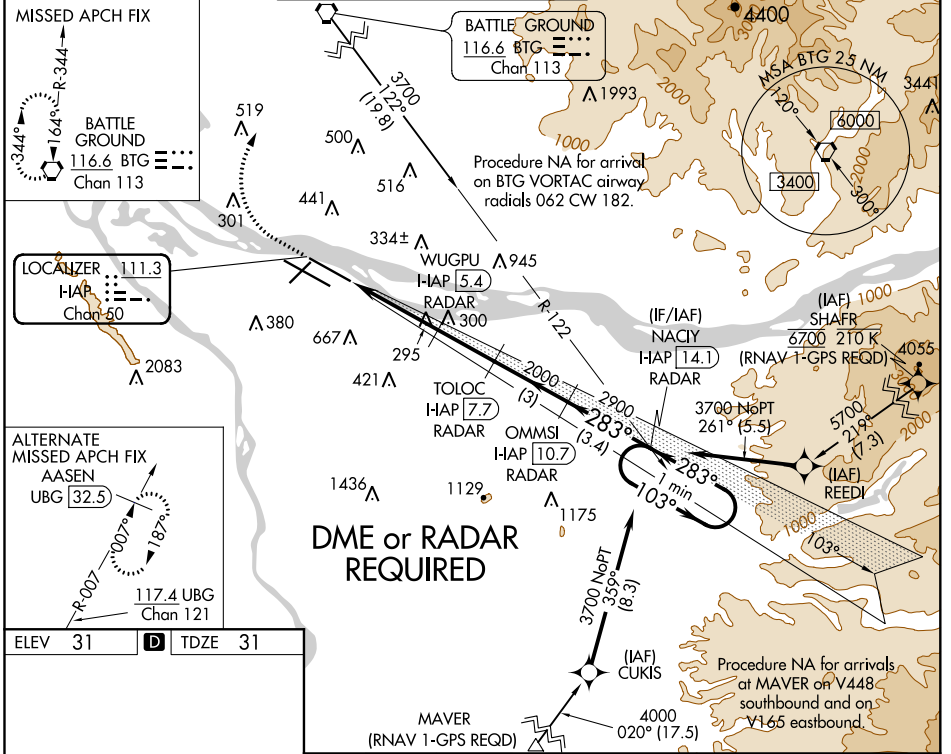


LOC/DME I-HAP 111.3 Chan 50	APP CRS 283°	Rwy Idg TDZE Apt Elev 9290 31 31
------------------------------------------	------------------------	----------------------------------------------------------------------

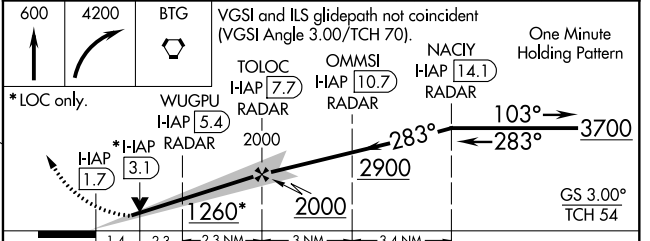
ILS or LOC RWY 28R

PORTLAND INTL (PDX)

<p>V Simultaneous approach authorized. For inop ALS, increase S-ILS 28R Cat E visibility to RVR 4000; increase S-LOC 28R Cat E to 1½ SM.</p> <p>A MALSR</p>	<p>MISSED APPROACH: Climb to 600 then climbing right turn to 4200 direct BTG VORTAC and hold, continue climb-in-hold to 4200.</p>					
	D-ATIS 128.35 269.9	PORTLAND APP CON 124.35 299.2	PORTLAND TOWER Rwy 10L-28R 118.7 257.8	Rwys 3-21, 10R-28L 123.775 251.125	GND CON 121.9 348.6	CLNC DEL 120.125 318.1



ELEV 31	D	TDZE 31			
<p>REIL Rws 3 and 21 TDZ/CL Rwy 10R MIRL Rwy 3-21 HIRL Rws 10L-28R and 10R-28L</p> <p>FAF to MAP 6 NM</p>					
Knots	60	90	120	150	180
Min:Sec	6:00	4:00	3:00	2:24	2:00



CATEGORY	A	B	C	D	E
S-ILS 28R	281/24 250 (300-½)				
S-LOC 28R	560/24	529 (600-½)	560/55 529 (600-1)		
C CIRCLING	720-1 689 (700-1)	760-1 729 (800-1)	1060-3	1029 (1100-3)	1140-3 1109 (1200-3)

NW-1, 25 FEB 2021 to 25 MAR 2021

NW-1, 25 FEB 2021 to 25 MAR 2021