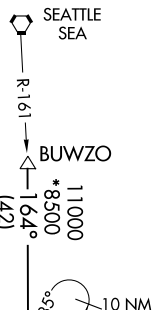


KRATR TWO ARRIVAL (RNAV)

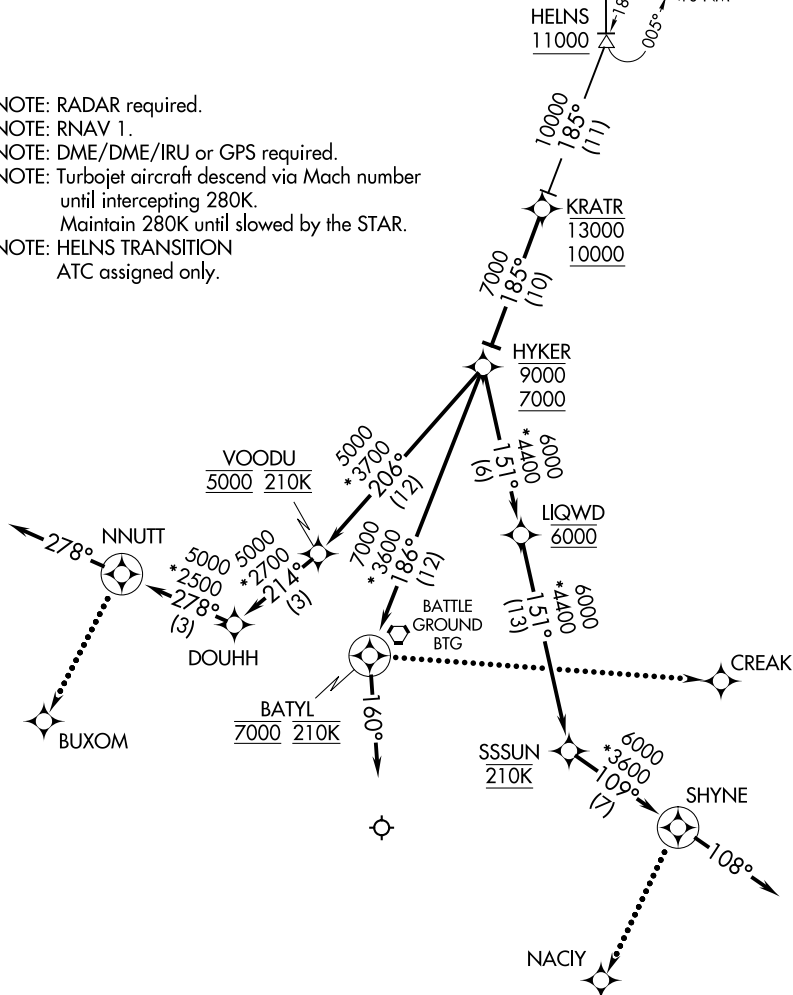
AL-330 (FAA)

PORTLAND, OREGON

D-ATIS
 128.35 269.9
 PORTLAND APP CON
 124.35 299.2
 PORTLAND TOWER
 118.7 257.8 (Rwy 10L-28R)
 123.775 251.125 (Rwys 3-21, 10R-28L)
 GND CON
 121.9 348.6



- NOTE: RADAR required.
- NOTE: RNAV 1.
- NOTE: DME/DME/IRU or GPS required.
- NOTE: Turbojet aircraft descend via Mach number until intercepting 280K.
- NOTE: Maintain 280K until slowed by the STAR.
- NOTE: HELNS TRANSITION ATC assigned only.



NW-1, 25 FEB 2021 to 25 MAR 2021

NW-1, 25 FEB 2021 to 25 MAR 2021

(NARRATIVE ON FOLLOWING PAGE)

NOTE: Chart not to scale.

KRATR TWO ARRIVAL (RNAV)

(KRATR.KRATR2) 25JUN15

PORTLAND, OREGON

PORTLAND INTL (PDX)