

LAVAA SIX DEPARTURE (RNAV)

AL-330 (FAA)

NW-1, 25 FEB 2021 to 25 MAR 2021

DEPARTURE ROUTE DESCRIPTION

TAKEOFF RUNWAYS 10L/R: Climb heading 103° to 540, then direct to RIVRR, then on depicted route to LAVAA, thence. . . .

TAKEOFF RUNWAY 28L: Climb heading 283° to 540, then direct PEGTY, then on depicted route to LAVAA, thence. . . .

TAKEOFF RUNWAY 28R: Climb heading 283°, intercept course 268° to PEGTY, then on depicted route to LAVAA, thence. . . .

. . . via (Transition), maintain assigned altitude, expect filed altitude 10 minutes after departure.

PENDELTON TRANSITION (LAVAA6.PDT)

YAKIMA TRANSITION (LAVAA6.YKM)

NOTE: Turbojet aircraft only.
NOTE: RADAR required for non-GPS equipped aircraft.
NOTE: RNAV 1.
NOTE: DME/DME/IRU or GPS required.

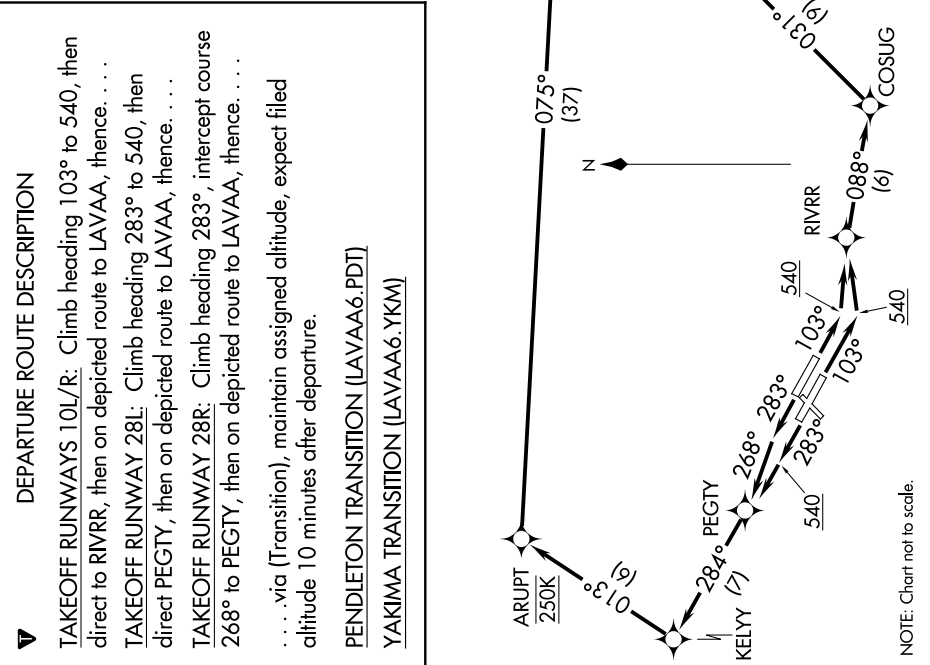
TAKEOFF MINIMUMS
 Rwy 3, 21: NA - ATC
 Rwy 10L/R, 28L/R: Standard with minimum climb of 500' per NM to 540, then minimum climb of 350' per NM to FL190.

PORTLAND TOWER
118.7 257.8 (Rwy 10L-28L)
123.775 251.125 (Rwys 3-21, 10R-28L)
124.35 299.2

YAKIMA
YKM

D-ATIS
 128.35 269.9
 CINC DEL
 120.125 318.1
 CPDLC
 GND CON
 121.9 348.6
 PORTLAND TOWER
 118.7 257.8 (Rwy 10L-28L)
 123.775 251.125 (Rwys 3-21, 10R-28L)
 PORTLAND DEP CON
 124.35 299.2

NOTE: For non-GPS equipped aircraft departing Rwy 10L/R, UBG DME must be operational for the YAKIMA TRANSITION.
NOTE: GPS required for aircraft departing Rwy 10L/R, for the PENDELTON TRANSITION.
NOTE: For non-GPS equipped aircraft departing Rwy 28L/R, UBG and BTG DME must be operational for all transitions.



NOTE: Chart not to scale.

NW-1, 25 FEB 2021 to 25 MAR 2021

LAVAA SIX DEPARTURE (RNAV)