

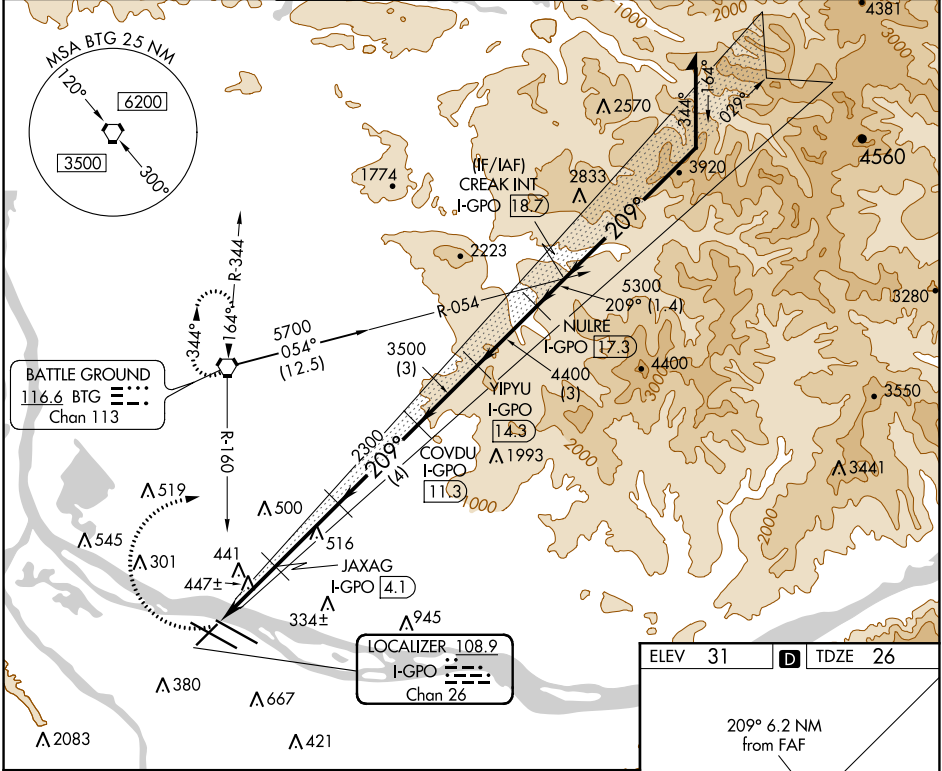
LOC/DME I-GPO 108.9 Chan 26	APP CRS 209°	Rwy Idg 6000 TDZE 26 Apt Elev 31
---	------------------------	---

LOC/DME RWY 21

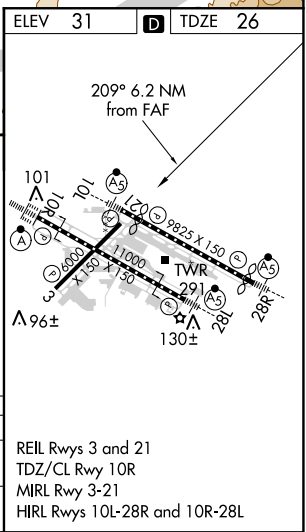
PORTLAND INTL (PDX)

▼ Helicopter visibility reduction below 3/4 SM NA.
▲ MISSED APPROACH: Climbing right turn to 4200 on BTG VORTAC R-160 to BTG VORTAC and hold, continue climb-in-hold to 4200.

D-ATIS 128.35 269.9	PORTLAND APP CON 124.35 299.2	PORTLAND TOWER Rwy 10L-28R Rws 3-21, 10R-28L 118.7 257.8 123.775 251.125	GND CON 121.9 348.6	CLNC DEL 120.125 318.1	CPDLC
---	---	---	-------------------------------	----------------------------------	-------



BTG VGSI and descent angles not coincident (VGSI Angle 3.60/TCH 32).	CREAK INT I-GPO 18.7		Remain within 10 NM	
	10000 029° 5700	209°		
1120 2300 3500 4400 5300 5700 1.7 1.3 3.2 NM 4 NM 5 NM 6 NM 6.2 NM	JAXAG I-GPO 4.1 HUDUT I-GPO 7.3 COVDU I-GPO 11.3 YIPYU I-GPO 14.3 NULRE I-GPO 17.3	I-GPO 1.2 I-GPO 2.8	3.43° TCH 32	
CATEGORY	A	B	C	D
S-21	700-1	674 (700-1)	700-1 3/8	674 (700-1 3/8)
C CIRCLING	720-1 689 (700-1)	760-1 729 (800-1)	1060-3	1029 (1100-3)



NW-1, 25 FEB 2021 to 25 MAR 2021

NW-1, 25 FEB 2021 to 25 MAR 2021