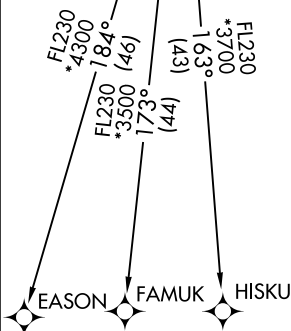
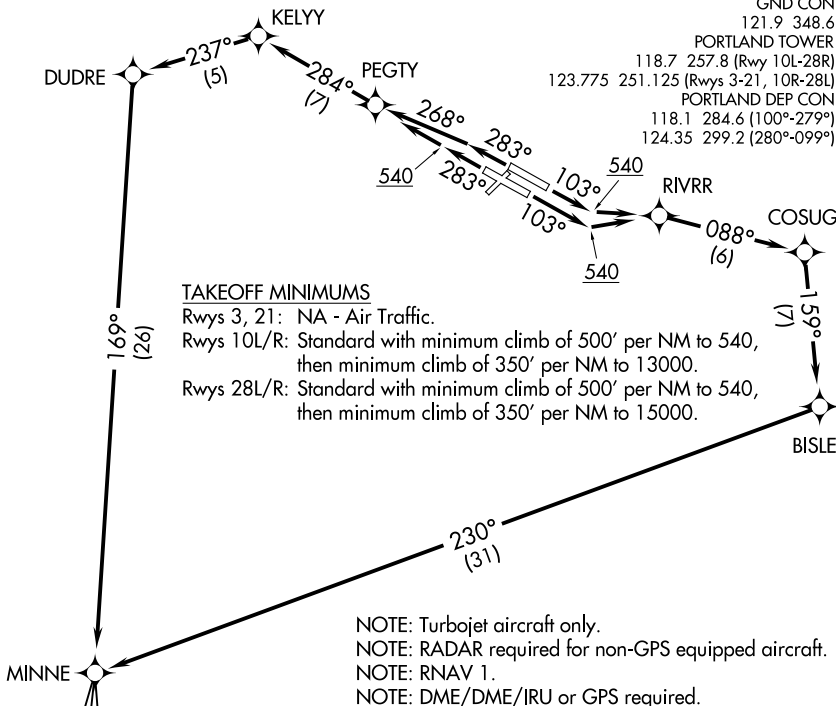


NW-1, 25 FEB 2021 to 25 MAR 2021

NW-1, 25 FEB 2021 to 25 MAR 2021

- D-ATIS 128.35 269.9
- CLNC DEL 120.125 318.1
- CPDLC
- GND CON 121.9 348.6
- PORTLAND TOWER 118.7 257.8 (Rwy 10L-28R)
- 123.775 251.125 (Rwys 3-21, 10R-28L)
- PORTLAND DEP CON 118.1 284.6 (100°-279°)
- 124.35 299.2 (280°-099°)



**DEPARTURE ROUTE DESCRIPTION**

TAKEOFF RUNWAYS 10L/R: Climb heading 103° to 540, then direct to RIVRR, then on depicted route, thence. . .

TAKEOFF RUNWAY 28L: Climb heading 283° to 540, then direct to PEGTY, then on depicted route, thence. . .

TAKEOFF RUNWAY 28R: Climb heading 283°, intercept course 268° to PEGTY, then on depicted route thence. . .

. . . via (Transition), maintain assigned altitude, expect filed altitude 10 minutes after departure.

EASON TRANSITION (MINNE5.EASON)

FAMUK TRANSITION (MINNE5.FAMUK)

HISKU TRANSITION (MINNE5.HISKU)