


# RNAV (RNP) Y RWY 28L

PORTLAND INTL (PDX)

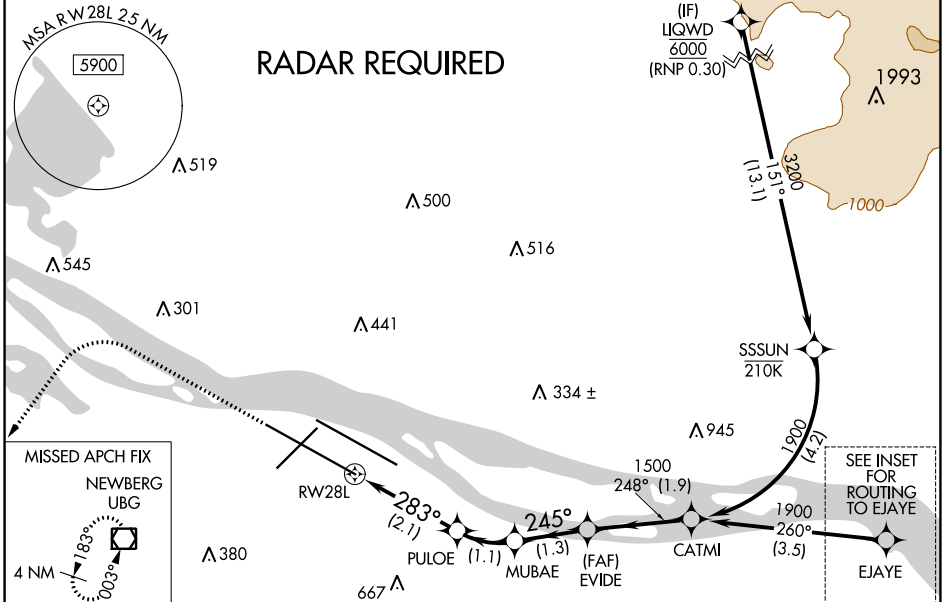
APP CRS	Rwy Idg	<b>11000</b>
<b>283°</b>	TDZE	<b>23</b>
	Apt Elev	<b>31</b>

▼ For uncompensated Baro-VNAV systems, procedure NA below -7°C (20°F) or above 54°C (130°F). For inop MAALS, increase RNP 0.23 all Cats visibility to RVR 5600 and increase RNP 0.30 all Cats visibility to 1½ mile. Simultaneous approach authorized with Rwy 28R. RF required. GPS required. Use of FD or AP providing RNAV track guidance required during simultaneous operations.

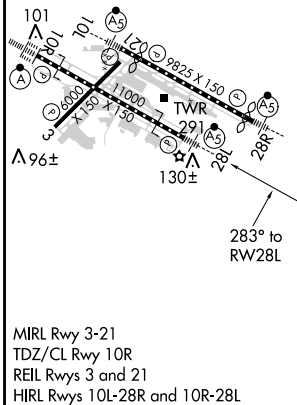
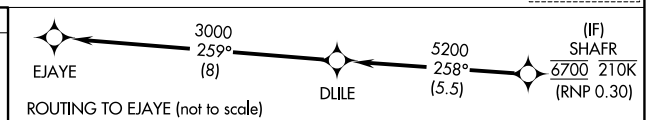
**MAALS** 

**MISSED APPROACH:** Climb to 2100 then climbing left turn to 4000 direct UBG VOR/DME and hold.

D-ATIS <b>128.35</b> <b>269.9</b>	PORTLAND APP CON <b>124.35 299.2</b>	PORTLAND TOWER Rwy 10L-28R <b>118.7 257.8</b>	Rwys 3-21, 10R-28L <b>123.775 251.125</b>	GND CON <b>121.9 348.6</b>	CLNC DEL <b>120.125 318.1</b>	CPDLC
---	---	---	--	-------------------------------	----------------------------------	-------

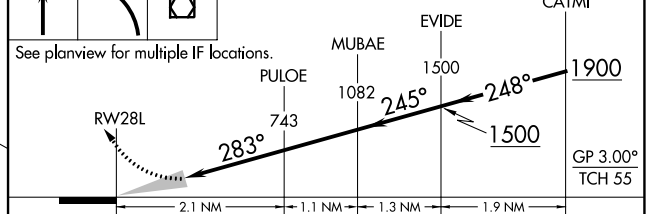


ELEV 31	<b>D</b>	TDZE 23
---------	----------	---------



See planview for multiple IF locations.

VGS1 and RNAV glidepath not coincident (VGS1 Angle 3.00/TCH 72).



CATEGORY	A	B	C	D
RNP 0.23 DA		370/33	347 (400-5%)	
RNP 0.30 DA		476/53	453 (500-1)	

## AUTHORIZATION REQUIRED

# RNAV (RNP) Y RWY 28L

NW-1, 25 FEB 2021 to 25 MAR 2021

NW-1, 25 FEB 2021 to 25 MAR 2021