


APP CRS	Rwy Idg	<b>11000</b>
<b>283°</b>	TDZE	<b>23</b>
	Apt Elev	<b>31</b>

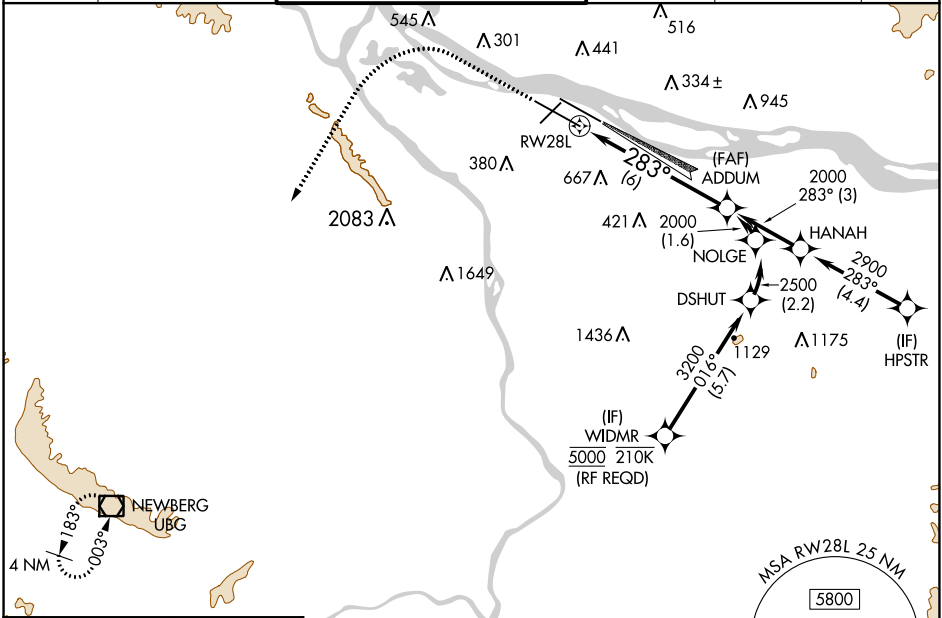
# RNAV (RNP) Z RWY 28L

PORTLAND INTL (PDX)

▼ For uncompensated Baro-VNAV systems, procedure NA below -15°C (5°F) or above 54°C (130°F). For inoperative MALS, increase RNP 0.27 all Cats visibility to RVR 6000 and increase RNP 0.30 all Cats visibility to 1½ mile. Simultaneous approach authorized with Rwy 28R. GPS Required. Use of FD or AP providing RNAV track guidance required during simultaneous operations.

**MALS**  
 MISSED APPROACH: Climb to 2100 then climbing left turn to 4000 direct UBG VOR/DME and hold.

D-ATIS <b>128.35</b> <b>269.9</b>	PORTLAND APP CON <b>124.35 299.2</b>	PORTLAND TOWER Rwy 10L-28R    Rwys 3-21, 10R-28L <b>118.7 257.8    123.775 251.125</b>	GND CON <b>121.9 348.6</b>	CLNC DEL <b>120.125 318.1</b>	CPDLC
---	---	--	-------------------------------	----------------------------------	-------



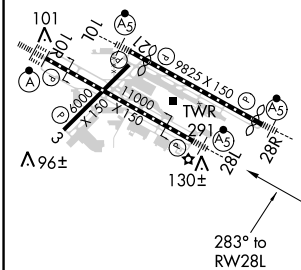
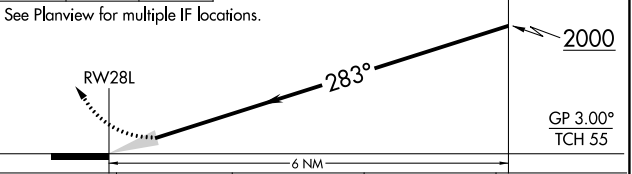
NW-1, 25 FEB 2021 to 25 MAR 2021

NW-1, 25 FEB 2021 to 25 MAR 2021

ELEV 31	<b>D</b>	TDZE 23
---------	----------	---------

### RADAR REQUIRED

2100	4000	UBG	VGSI and RNAV glidepath not coincident (VGSI Angle 3.00/TCH 72).
------	------	-----	--



REIL Rwys 3 and 21  
 TDZ/CL Rwy 10R  
 MIRL Rwy 3-21  
 HIRL Rwys 10L-28R and 10R-28L

CATEGORY	A	B	C	D
RNP 0.27 DA		374/35	351 (400-¾)	
RNP 0.30 DA		494/60	471 (500-1¼)	

## AUTHORIZATION REQUIRED