

PORTLAND, OREGON

TACAN RWY 28L

TACAN CBU Chan 29	APCH CRS 275°	Rwy ldg 11,000 TDZE 23 Arprt Elev 31
-----------------------------	-------------------------	---

AL-330 [USAF]

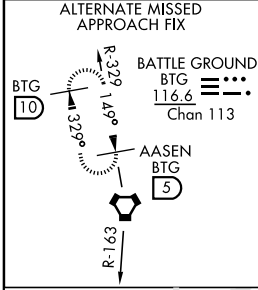
PORTLAND INTL (KPDX)

▼ *When ALS inop, increase CAT AB RVR to 50 and vis to 1 mile,
 CAT C vis to 1½ miles, CAT D vis to ¾ miles, CAT E vis to 2 miles
 ▲ **When VGSI rwy 28R inop, circling rwy 28R NA at night.

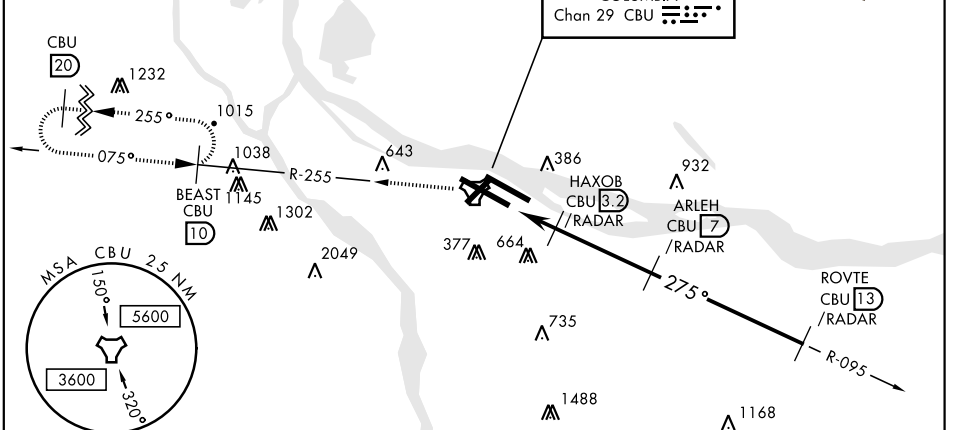


† MISSED APPROACH: Climbing left turn to 4000
 via CBU TACAN R-255 to BEAST INT/CBU 10
 DME and hold or when directed by ATC.

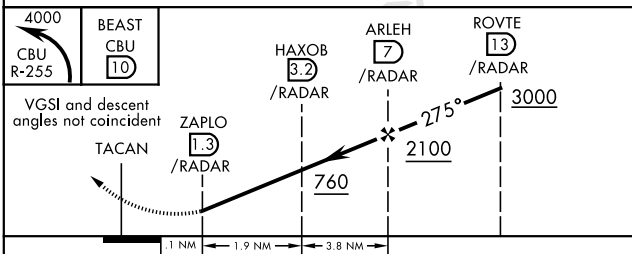
ATIS 128.35 269.9	PORTLAND APP CON 124.35 299.2	PORTLAND TOWER 118.7 257.8 Rwy 10L-28R 123.775 251.125 Rwy 3-21, 10R-28L	GND CON 121.9 348.6	CLNC DEL 120.125 318.1
-----------------------------	---	--	-------------------------------	----------------------------------



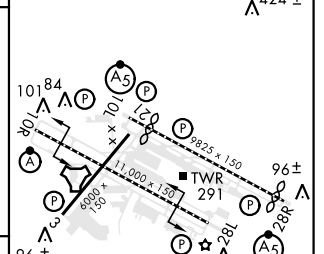
† ALTERNATE MISSED APPROACH: Climb to 4300 via
 BTG VORTAC R-163 to BTG then via BTG R-329 to
 AASEN INT and hold.



RADAR REQUIRED



ELEV 31	TDZE 23
---------	---------



CATEGORY	A	B	C	D	E
S-28L *	600/24 577 (600-½)		600/50 577 (600-1)	600/60 577 (600-1¼)	600-1½ 577 (600-1½)
CIRCLING **	720-1 689 (700-1)	740-1 709 (800-1)	760-2 729 (800-2)	1000-3 969 (1000-3)	1160-3 1129 (1200-3)

PORTLAND, OREGON
Amdt 1 18OCT12

45° 35' N-122° 36' W

PORTLAND INTL (KPDX)

TACAN RWY 28L

NW-1, 25 FEB 2021 to 25 MAR 2021

NW-1, 25 FEB 2021 to 25 MAR 2021