

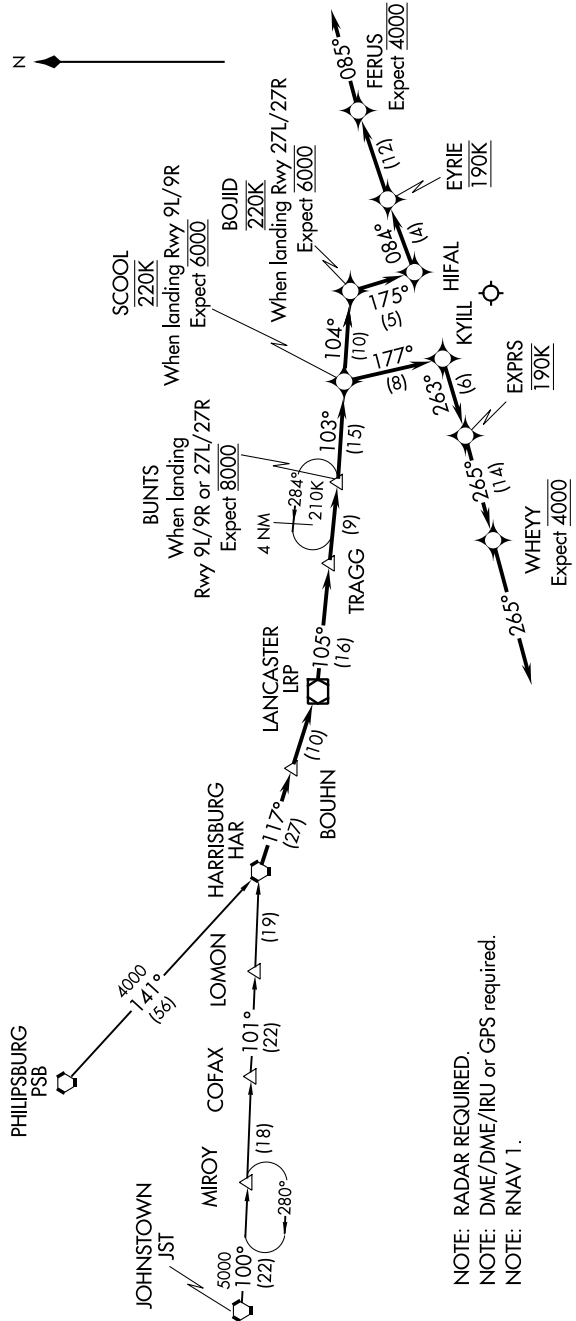
BOJID TWO ARRIVAL (RNAV)

NE-4, 25 FEB 2021 to 25 MAR 2021

JOHNSTOWN TRANSITION (JST,BOJID2):
PHILIPSBURG TRANSITION (PSB,BOJID2):

D-ATIS ARR 133.4
PHILADELPHIA APP CON
124.35 319.15
PHILADELPHIA FINAL CONTROL
125.4, 263.125
PHILADELPHIA TOWER
118.5 327.05
(Rwys 9L/27R, 8/26 and 17/35)
135.1 327.05
(Rwy 9R/27L)
GND CON
121.9 348.6
CLNC DEL
118.85 348.6

From HAR VORTAC, thence BOUHN, thence LRP VOR/DME, thence TRAGG, thence BUNTS, WHEN PHILADELPHIA INTL IS LANDING RWYS 27L/27R, thence SCOOOL, thence BOJID, thence HIFAL, thence EYRIE, thence FERUS, depart FERUS heading 085°, expect RADAR vectors to final approach. WHEN PHILADELPHIA INTL IS LANDING RWYS 9L/9R, thence SCOOOL, thence KYILL, thence EXPRS, thence WHEYY, depart WHEYY heading 265°. Expect RADAR vectors to final approach.



NOTE: RADAR REQUIRED.
NOTE: DME/DME/IRU or GPS required.
NOTE: RNAV 1.

NOTE: Chart not to scale.

NE-4, 25 FEB 2021 to 25 MAR 2021