

ILS Z or LOC RWY 17

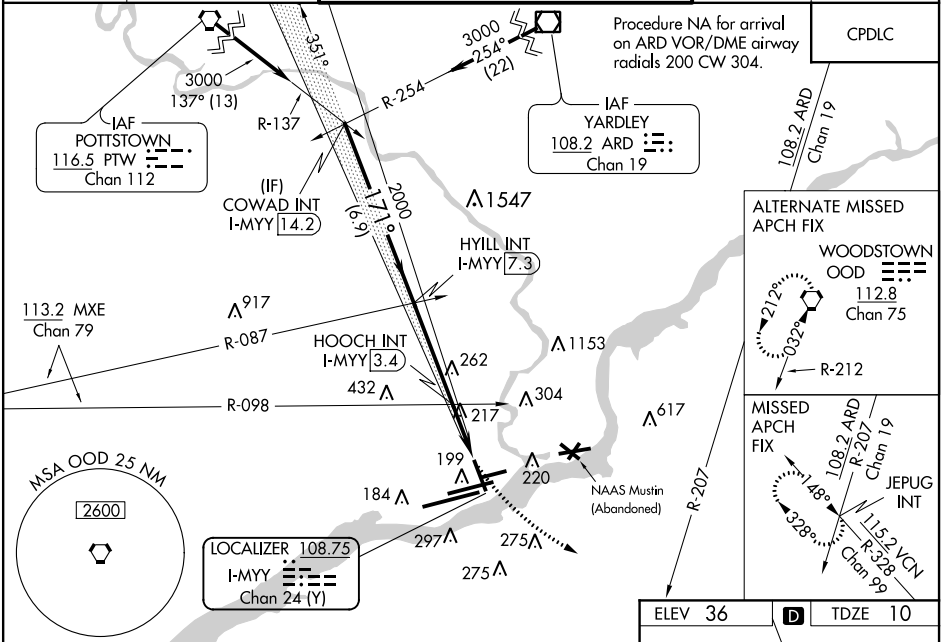
PHILADELPHIA INTL (PHL)

LOC/DME I-MYY 108.75 Chan 24 (Y)	APP CRS 171°	Rwy Idg TDZE Apt Elev	6500 10 36
---	------------------------	-----------------------------	---------------------------------------

⚠ Inop table does not apply to S-ILS 17 all Cats and S-LOC 17 Cat A. For inop ALS, increase S-LOC 17 Cat C visibility to 2 SM. HOOCH fix minimums: inop table does not apply to Cats A/B. Rwy 17 helicopter visibility reduction below RVR 5000 NA.

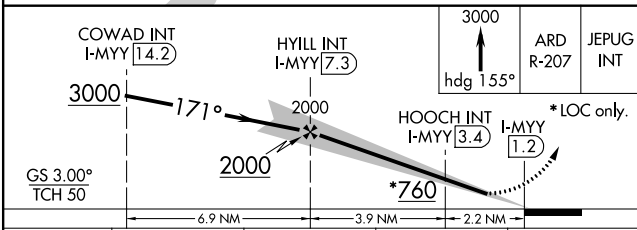
MALSIF
MISSED APPROACH: Climb to 3000 on heading 155° and ARD VOR/DME R-207 to JEPUG INT and hold.

D-ATIS ARR 133.4 DEP 135.925	PHILADELPHIA APP CON 124.35 319.15	PHILADELPHIA TOWER 118.5 327.05 (Rwys 9L/27R, 8/26 and 17/35) 135.1 327.05 (Rwy 9R/27L)	GND CON 121.9 348.6	CLNC DEL 118.85 348.6
--	--	---	-------------------------------	---------------------------------



NE-4, 25 FEB 2021 to 25 MAR 2021

NE-4, 25 FEB 2021 to 25 MAR 2021



CATEGORY	A	B	C	D
S-ILS 17		260/50	250 (300-1)	
S-LOC 17	760/50 750 (800-1)	760/55 750 (800-1)	760-1 ⁷ / ₈ 750 (800-1 ⁷ / ₈)	760-2 ¹ / ₄ 750 (800-2 ¹ / ₄)
CIRCLING	760-1 724 (800-1)	760-1 ¹ / ₄ 724 (800-1 ¹ / ₄)	760-2 724 (800-2)	760-2 ¹ / ₄ 724 (800-2 ¹ / ₄)
HOOCH FIX MINIMUMS				
S-LOC 17	480/50	470 (500-1)	480/60	470 (500-1 ¹ / ₄)
CIRCLING	540-1 504 (600-1)	640-1 604 (700-1)	640-1 ³ / ₄ 604 (700-1 ³ / ₄)	640-2 604 (700-2)

ELEV 36	D	TDZE 10			
TDZ/CL Rwy 9R HIRL all Rwys REIL Rwys 9L and 35 FAF to MAP 6.1 NM					
Knots	60	90	120	150	180
Min:Sec	6:06	4:04	3:03	2:26	2:02