

WAAS CH <b>86222</b> <b>W17A</b>	APP CRS <b>171°</b>	Rwy Idg TDZE <b>10</b> Apt Elev <b>36</b>	<b>6500</b>
----------------------------------------	------------------------	-------------------------------------------------	-------------

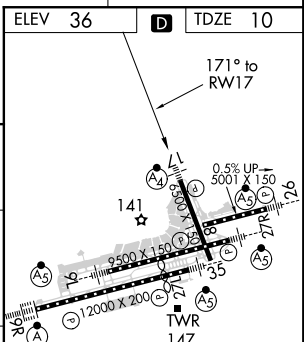
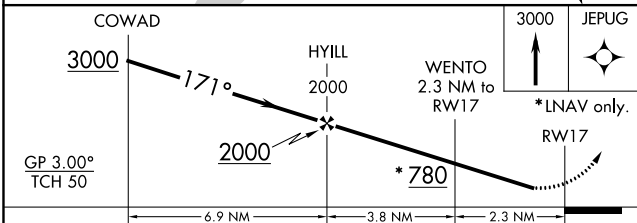
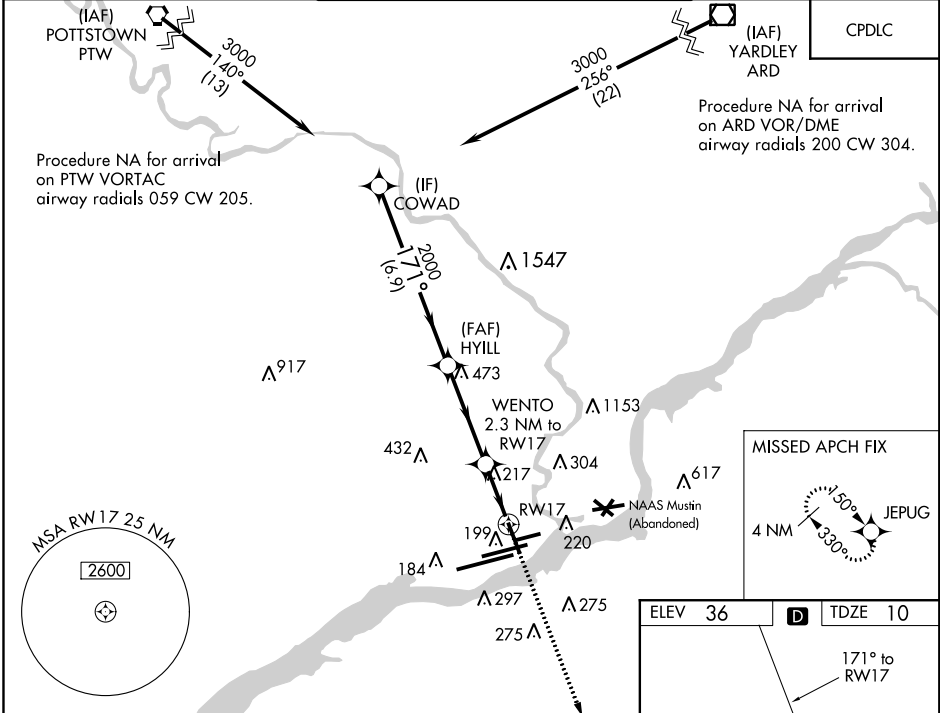
# RNAV (GPS) RWY 17

PHILADELPHIA INTL (PHL)

**▼** Inop table does not apply to LPV and LNAV/VNAV all Cats and LNAV Cats A/B. For uncompensated Baro-VNAV systems, LNAV/VNAV NA below -12°C (11°F) or above 54°C (130°F). DME/DME RNP-0.3 NA. Rwy 17 helicopter visibility reduction below RVR 5000 NA.

**MAISF**  
 =   
**MISSED APPROACH:**  
 Climb to 3000 direct JEPUG and hold.

D-ATIS ARR <b>133.4</b> DEP <b>135.925</b>	PHILADELPHIA APP CON <b>124.35 319.15</b>	PHILADELPHIA TOWER <b>118.5 327.05</b> (Rwys 9L/27R, 8/26 and 17/35) <b>135.1 327.05</b> (Rwy 9R/27L)	GND CON <b>121.9 348.6</b>	CLNC DEL <b>118.85 348.6</b>
--------------------------------------------------	----------------------------------------------	-------------------------------------------------------------------------------------------------------------	-------------------------------	---------------------------------



CATEGORY	A	B	C	D
LPV DA		260/50	250 (300-1)	
LNAV/VNAV DA		301/50	291 (300-1)	
LNAV MDA	480/50	470 (500-1)	480/60	470 (500-1¼)
CIRCLING	540-1 504 (600-1)	640-1 604 (700-1)	640-1¾ 604 (700-1¾)	640-2 604 (700-2)

TDZ/CL Rwy 9R  
 HIRL all Rwys  
 REIL Rwys 9L and 35

NE-4, 25 FEB 2021 to 25 MAR 2021

NE-4, 25 FEB 2021 to 25 MAR 2021