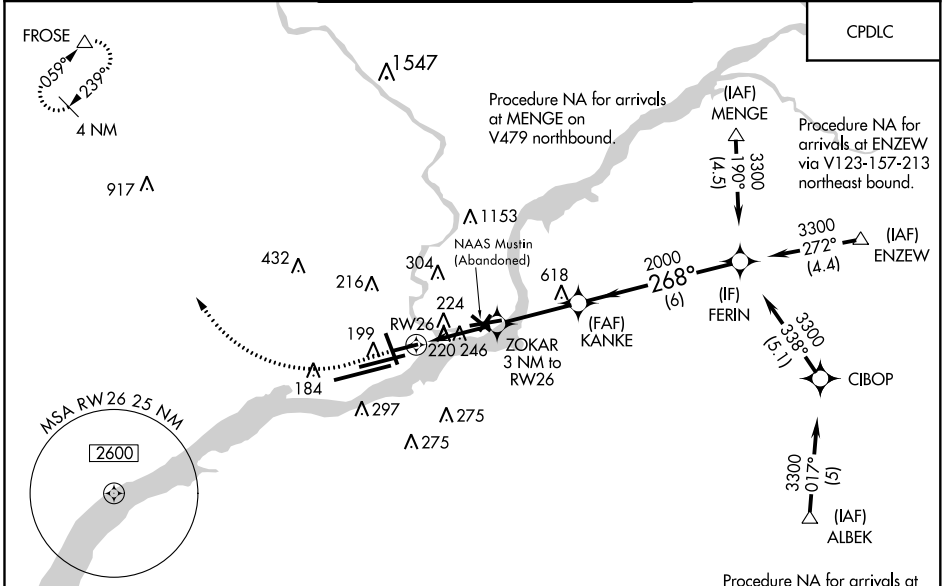


| | | | |
|-------------------------|------------------------|---------------------------|-------------|
| WAAS CH 78117 | APP CRS 268° | Rwy Idg TDZE 36 | 5001 |
| W26A | | Apt Elev 36 | |

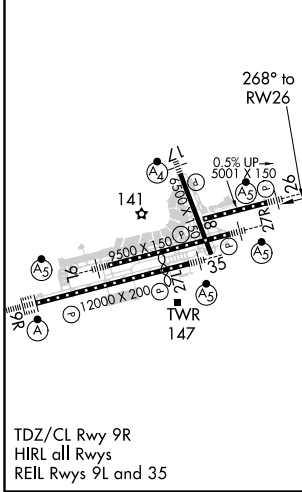
RNAV (GPS) RWY 26

PHILADELPHIA INTL (PHL)

| | | | |
|---|--|--|--|
| RNP APCH. | | <p>▼ For uncompensated Baro-VNAV systems, LNAV/VNAV NA below -12°C or above 54°C. For inop ALS, increase LPV all Cts visibility 3/8 SM, increase LNAV Cts A and B to RVR 5500. Simultaneous approach authorized. LNAV procedure NA during simultaneous operations. Use of FD or AP providing RNAV track guidance required during simultaneous operations. Rwy 26 helicopter visibility reduction below RVR 4000 NA.</p> | |
| <p>D-ATIS ARR 133.4 DEP 135.925</p> | | <p>PHILADELPHIA TOWER 118.5 327.05 (Rwys 9L/27R, 8/26 and 17/35) 135.1 327.05 (Rwy 9R/27L)</p> | |
| <p>PHILADELPHIA APP CON 124.35 319.15</p> | | <p>GND CON 121.9 348.6 CLNC DEL 118.85 348.6</p> | |



| | | |
|---------|----------|---------|
| ELEV 36 | D | TDZE 36 |
|---------|----------|---------|



| | | | | |
|---|----------------------|----------------------|------------------------|------------------------|
| <p>1055 800 3000 FROSE</p> <p>* LNAV only.</p> <p>ZOKAR 3 NM to RW26 KANKE 2000 FERIN 3300</p> <p>RW26 1040* 2000 268°</p> <p>GP 3.00° TCH 50</p> <p>1.2 1.8 NM 3 NM 6 NM</p> | | | | |
| CATEGORY | A | B | C | D |
| LPV DA | | 513/60 | 477 (500-1¼) | |
| LNAV/VNAV DA | | 573-1¾ | 537 (600-1¾) | |
| LNAV MDA | 540/40 | 504 (600-¾) | 540/55 | 504 (600-1) |
| C CIRCLING | 540-1 504 (600-1) | 600-1 564 (600-1) | 620-1½ 584 (600-1½) | 720-2¼ 684 (700-2¼) |

NE-4, 25 FEB 2021 to 25 MAR 2021

NE-4, 25 FEB 2021 to 25 MAR 2021