

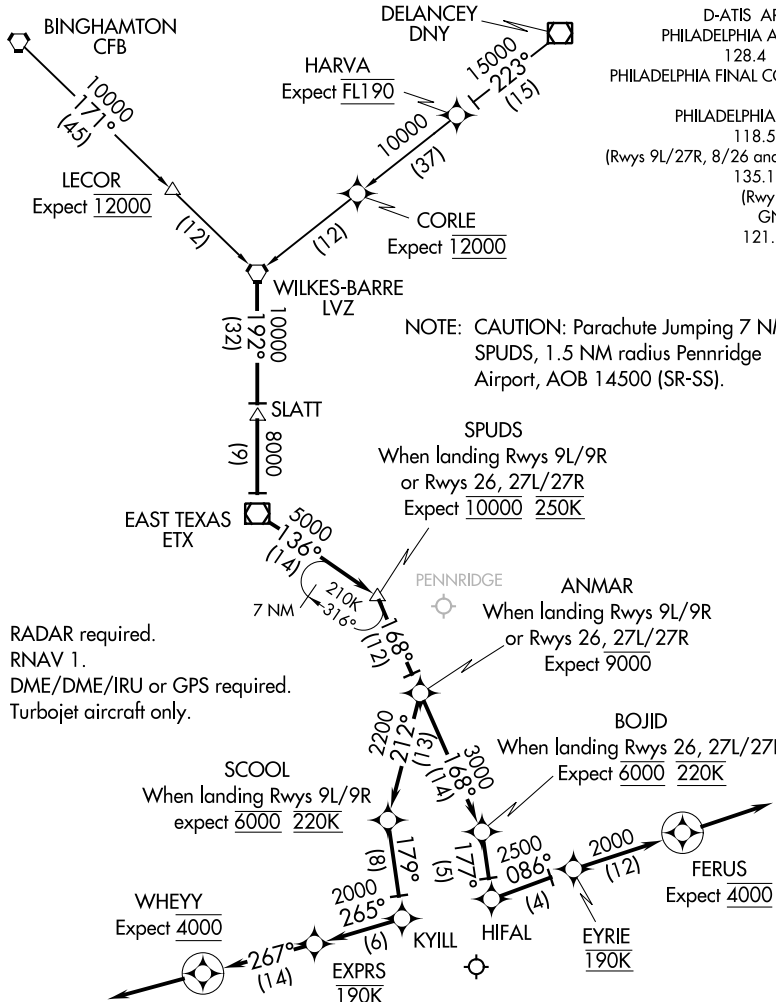
(LVZ.SPUDS4) 20310

AL-320 (FAA)

SPUDS FOUR ARRIVAL (RNAV)

PHILADELPHIA INTL (PHL)
PHILADELPHIA, PENNSYLVANIA

D-ATIS ARR 133.4
 PHILADELPHIA APP CON 128.4 272.575
 PHILADELPHIA FINAL CONTROL 125.4
 PHILADELPHIA TOWER 118.5 327.05
 (Rwys 9L/27R, 8/26 and 17/35) 135.1 327.05
 (Rwy 9R/27L) GND CON 121.9 348.6



NOTE: CAUTION: Parachute Jumping 7 NM SE SPUDS, 1.5 NM radius Pennridge Airport, AOB 14500 (SR-SS).

NOTE: RADAR required.
 NOTE: RNAV 1.
 NOTE: DME/DME/IRU or GPS required.
 NOTE: Turbojet aircraft only.

NOTE: Chart not to scale.

BINGHAMTON TRANSITION (CFB.SPUDS4):
DELANCEY TRANSITION (DNY.SPUDS4):

From LVZ VORTAC on track 192° to SLATT, then on track 192° to ETX VOR/DME, then on track 136° to SPUDS, then on track 168° to ANMAR then:
LANDING RWYS 26, 27L/27R: Then from ANMAR on track 168° to BOJID, then on track 177° to HIFAL, then on track 086° to EYRIE, then on track 086° to FERUS. Depart FERUS heading 086°. Expect RADAR vectors to final approach course.
LANDING RWYS 9L/9R: Then from ANMAR on track 212° to SCOOOL, then on track 179° to KYILL, then on track 265° to EXPRS, then on track 267° to WHEYY. Depart WHEYY heading 267°. Expect RADAR vectors to final.

SPUDS FOUR ARRIVAL (RNAV)

(LVZ.SPUDS4) 01FEB18

PHILADELPHIA, PENNSYLVANIA
PHILADELPHIA INTL (PHL)

NE-4, 25 FEB 2021 to 25 MAR 2021

NE-4, 25 FEB 2021 to 25 MAR 2021