

|                      |                        |                        |
|----------------------|------------------------|------------------------|
| LOM PH<br><b>332</b> | APP CRS<br><b>043°</b> | Rwy Idg<br><b>5104</b> |
|                      |                        | TDZE<br><b>647</b>     |
|                      |                        | Apt Elev<br><b>650</b> |

# NDB RWY 4

ST CLAIR COUNTY INTL (PHN)

**▽** When local altimeter setting not received, use Troy altimeter setting and increase all MDA 100 feet, increase S-4 and Circling Cats C and D visibility ¼. For inoperative MALS, increase S-4 Cats C and D visibility to 1¾ mile. For inoperative MALS when using Troy altimeter setting, increase S-4 Cat D visibility to 1¾ mile. Night landing: Rwy 10, 22, 28 NA.

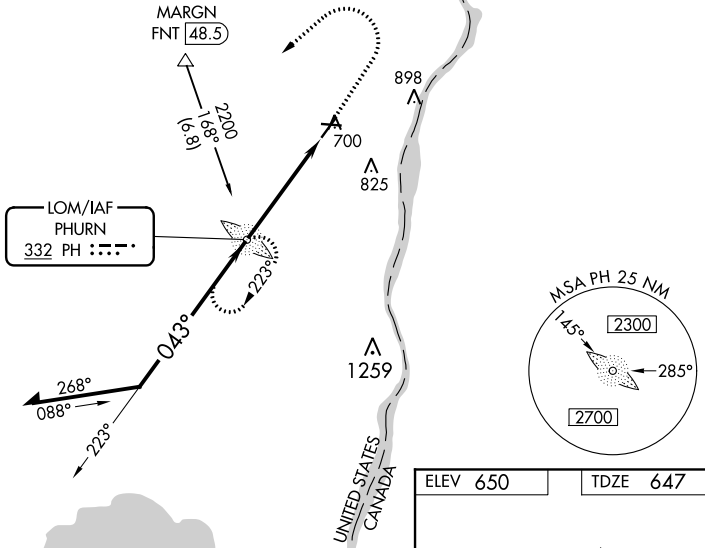


**MISSED APPROACH:**  
Climb to 2500 then climbing left turn to 4000 direct PHURN LOM and hold.

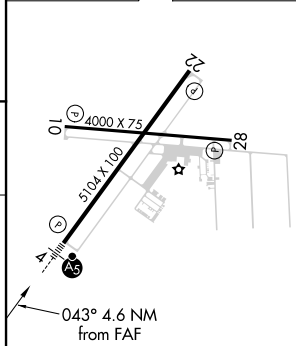
AWOS-3  
**118,375**

SELFRIDGE APP CON \*  
**119.6 391.9**

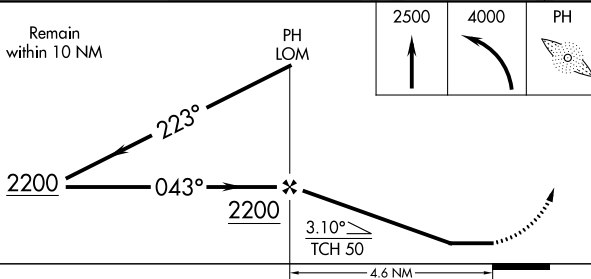
UNICOM  
**123.05 (CTAF) 0**



|          |          |
|----------|----------|
| ELEV 650 | TDZE 647 |
|----------|----------|



Remain within 10 NM



| CATEGORY          | A                  | B | C                    | D                  |
|-------------------|--------------------|---|----------------------|--------------------|
| S-4               | 1160-¾ 513 (600-¾) |   | 1160-1 513 (600-1)   |                    |
| <b>C</b> CIRCLING | 1160-1 510 (600-1) |   | 1260-1¾ 610 (700-1¾) | 1260-2 610 (700-2) |

|                         |                          |
|-------------------------|--------------------------|
| HIRL Rwy 4-22           | <b>0</b>                 |
| MIRL Rwy 10-28          | <b>0</b>                 |
| REIL Rws 10, 22, and 28 | <b>0</b>                 |
| FAF to MAP 4.6 NM       |                          |
| Knots                   | 60 90 120 150 180        |
| Min:Sec                 | 4:36 3:04 2:18 1:50 1:32 |