

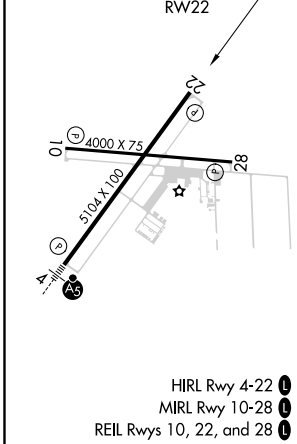
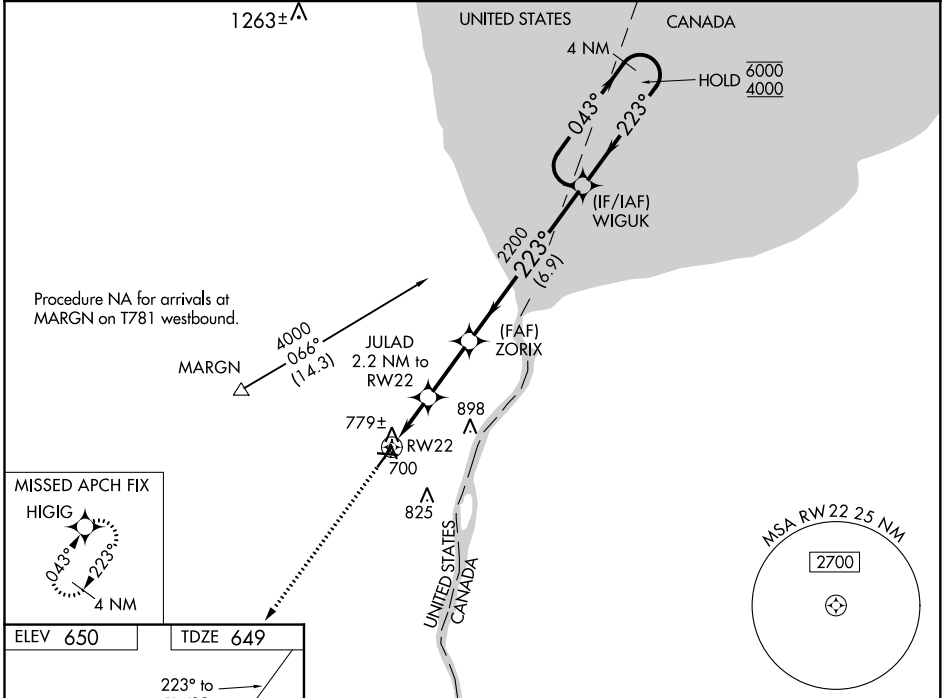
WAAS CH 97723 W22A	APP CRS 223°	Rwy ldg 5104 TDZE 649 Apt Elev 650
--	------------------------	---

RNAV (GPS) RWY 22

ST CLAIR COUNTY INTL (PHN)

RNP APCH.	MISSED APPROACH: Climb to 4000 direct HIGIG and hold, continue climb-in-hold to 4000.
<p>▼ Rwy 22 helicopter visibility reduction below 1 SM NA.</p> <p>▲ Straight-in Rwy 22 NA at night, Circling Rwy 10, 22, 28 NA at night.</p>	

AWOS-3 118.375	SELFRRDGE APP CON ★ 119.6 391.9	UNICOM 123.05 (CTAF) 0
--------------------------	---	----------------------------------



ELEV 650	TDZE 649	4000 HIGIG		VGSi and descent angles not coincident (VGSi Angle 3.00/TCH 31).		4 NM Holding Pattern	
<p>223° to RWY 22</p> <p>4000 X 75</p> <p>5104 X 100</p> <p>28</p> <p>779±</p> <p>700</p> <p>825</p> <p>898</p> <p>RWY 22</p> <p>ZORIX</p> <p>JULAD 2.2 NM to RWY 22</p> <p>3.00° TCH 55</p> <p>1400</p> <p>2200</p> <p>2.2 NM</p> <p>2.5 NM</p> <p>6.9 NM</p> <p>WIGUK</p> <p>043° → 6000</p> <p>← 223° 4000</p>							
CATEGORY	A	B	C	D			
LP MDA	1020-1 371 (400-1)						
LNAV MDA	1040-1 391 (400-1)		1040-1½ 391 (400-1½)				
CIRCLING	1160-1 510 (600-1)		1260-1¾ 610 (700-1¾)		1260-2 610 (700-2)		

EC-1, 25 FEB 2021 to 25 MAR 2021

EC-1, 25 FEB 2021 to 25 MAR 2021