

WAAS CH <b>53523</b> <b>W04A</b>	APP CRS <b>043°</b>	Rwy Ldg TDZE Apt Elev	<b>5104</b> <b>647</b> <b>650</b>
--	------------------------	-----------------------------	---


# RNAV (GPS) RWY 4

ST CLAIR COUNTY INTL (PHN)

RNP APCH.

**⚠** Circling Rwy 10, 22, 28 NA at night. For uncompensated Baro-VNAV systems, LNAV/VNAV NA below -16°C or above 54°C. For inoperative ALS, increase LNAV/VNAV all Cats visibility to 3/8 mile and LNAV Cat C/D visibility to 1 SM.

**MALS**

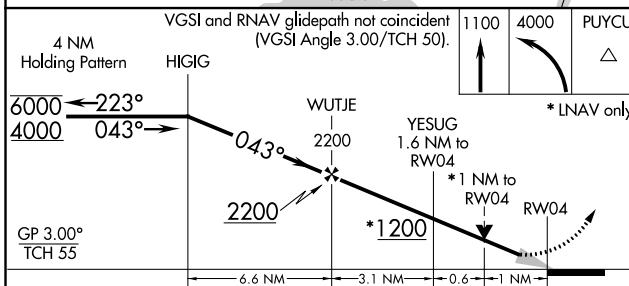
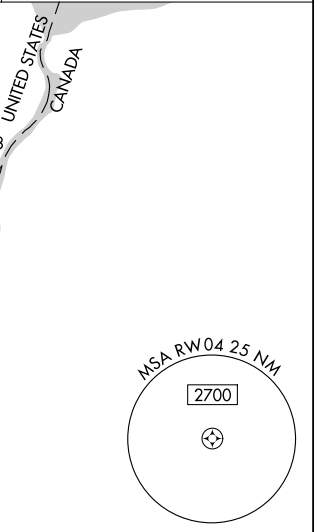
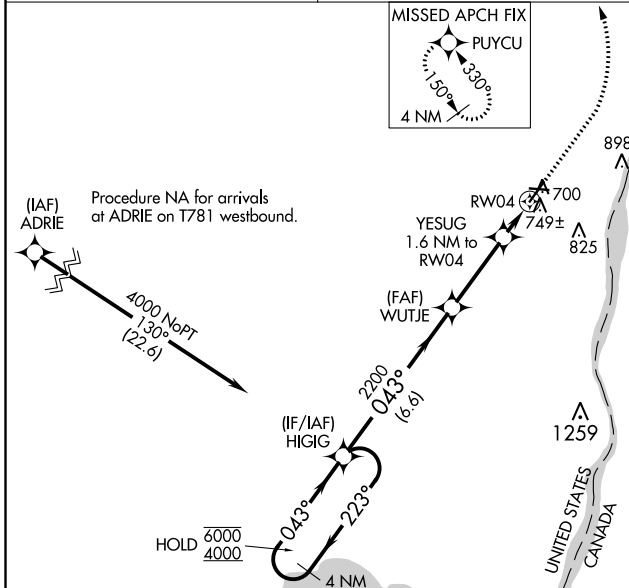


**MISSED APPROACH:**  
Climb to 1100 then climbing left turn to 4000 direct PUYCU and hold, continue climb-in-hold to 4000.

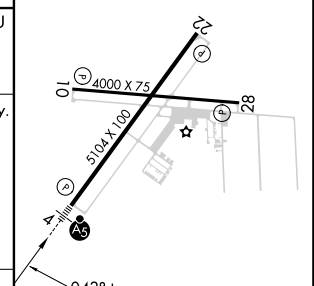
AWOS-3  
**118.375**

SELFRIDGE APP CON \*  
**119.6 391.9**

UNICOM  
**123.05 (CTAF)**



ELEV 650	TDZE 647
----------	----------



CATEGORY	A	B	C	D
LPV DA	847-1/2		200 (200-1/2)	
LNAV/VNAV DA	930-1/2		283 (300-1/2)	
LNAV MDA	1000-1/2	353 (400-1/2)	1000-5/8	353 (400-5/8)
<b>C</b> CIRCLING	1160-1	510 (600-1)	1260-1 3/4 610 (700-1 3/4)	1260-2 610 (700-2)

HIRL Rwy 4-22 **1**

MIRL Rwy 10-28 **1**

REIL Rws 10, 22, and 28 **1**

EC-1, 25 FEB 2021 to 25 MAR 2021

EC-1, 25 FEB 2021 to 25 MAR 2021