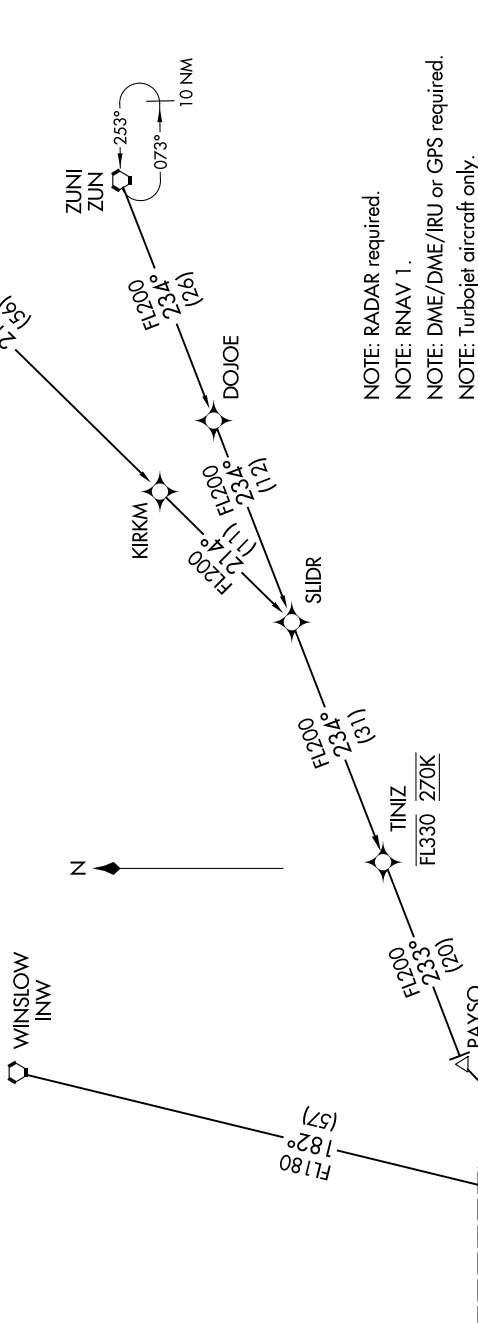


EAGUL SIX ARRIVAL (RNAV) Transition Routes

SW-4, 25 FEB 2021 to 25 MAR 2021

- NOTE: GALLUP and ZUNI TRANSITIONS: For non-GPS equipped aircraft INW DME must be operational.
- NOTE: LANDING EAST: For non-GPS equipped aircraft PXR and IWA DMEs must be operational.
- NOTE: File GALLUP or ZUNI TRANSITIONS only. WINSLOW TRANSITION assigned by ATC for hazardous weather avoidance only.

PHOENIX APP CON  
128.65 353.9  
PHOENIX TOWER  
118.7 278.8 (Rwy 8-26)  
120.9 254.3 (Rwy 7L-25R, 7R-25L)  
GND CON  
119.75 269.2 (North)  
132.55 269.2 (South)  
D-ATIS  
127.575



- NOTE: RADAR required.
- NOTE: RNAV 1.
- NOTE: DME/DME/IRU or GPS required.
- NOTE: Turbojet aircraft only.

NOTE: Chart not to scale.

GALLUP TRANSITION (GUP.EAGUL6)  
WINSLOW TRANSITION (INW.EAGUL6)  
ZUNI TRANSITION (ZUN.EAGUL6)

(CONTINUED ON FOLLOWING PAGE)

SW-4, 25 FEB 2021 to 25 MAR 2021

EAGUL SIX ARRIVAL (RNAV) Transition Routes