

LOC/DME I-CWJ <b>111.75</b> Chan <b>54 (Y)</b>	APP CRS <b>258°</b>	Rwy Idg <b>11489</b> TDZE <b>1135</b> Apt Elev <b>1135</b>
--	------------------------	--

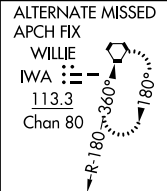
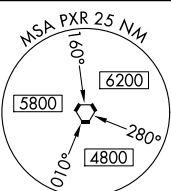
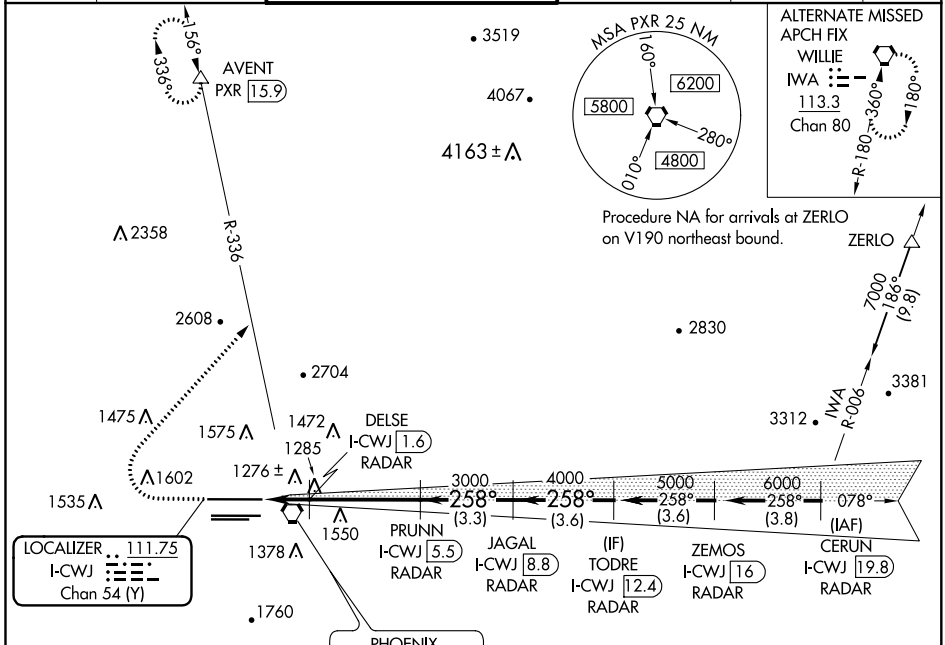
# ILS or LOC RWY 26

PHOENIX SKY HARBOR INTL (PHX)

DME or RADAR required.

MISSED APPROACH: Climb to 2500 then climbing right turn to 5000 on heading 030° and PXR VORTAC R-336 to AVENT/PXR 15.9 DME and hold.

D-ATIS <b>127.575</b>	PHOENIX APP CON <b>128.65 353.9</b>	PHOENIX TOWER <b>118.7 278.8</b> (Rwy 8-26) <b>120.9 254.3</b> (Rwy 7L-25R, 7R-25L)	GND CON <b>119.75 269.2 (N)</b> <b>132.55 269.2 (S)</b>	CLNC DEL <b>118.1 269.2</b>	CPDLC
--------------------------	--	---	---	--------------------------------	-------

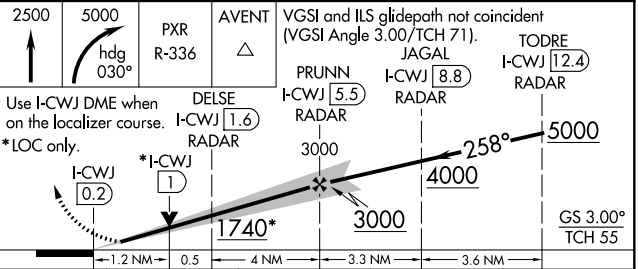
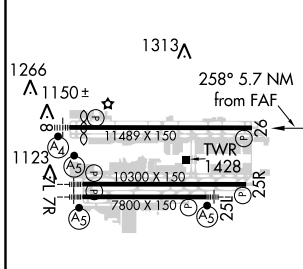


Procedure NA for arrivals at ZERLO on V190 northeast bound.

ELEV 1135	<b>D</b>	TDZE 1135
-----------	----------	-----------

PHOENIX 115.6 PXR Chan 103

WILLIE 113.3 IWA Chan 80



Use I-CWJ DME when on the localizer course. *LOC only.	DELSE I-CWJ 1.6 RADAR	PRUNN I-CWJ 5.5 RADAR	JAGAL I-CWJ 8.8 RADAR	ZEMOS I-CWJ 16 RADAR	CERUN I-CWJ 19.8 RADAR
CATEGORY	A	B	C	D	
S-ILS 26	1385-3/4 250 (300-3/4)				
S-LOC 26	1580-1	445 (500-1)	1580-1 3/8	445 (500-3/8)	
<b>C</b> CIRCLING	1740-1	605 (700-1)	2040-2 3/4	2560-3	905 (1000-2 3/4) 1425 (1500-3)

SW-4, 25 FEB 2021 to 25 MAR 2021

SW-4, 25 FEB 2021 to 25 MAR 2021