


LOC/DME I-AHA 110.75 Chan 44 (Y)	APP CRS 078°	Rwy ldg 7800 TDZE 1116 Apt Elev 1135
--	------------------------	---

ILS or LOC RWY 7R

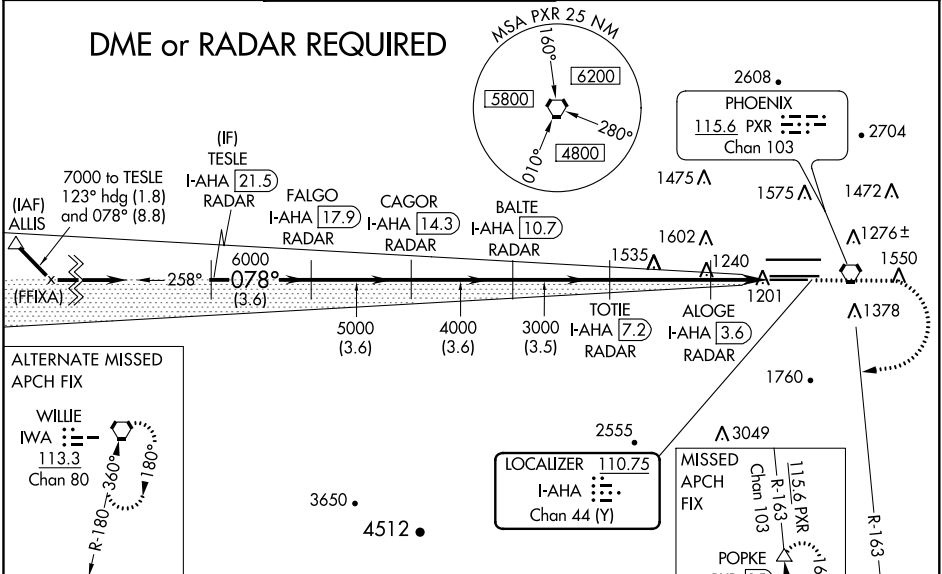
PHOENIX SKY HARBOR INTL (PHX)

⚠ Inoperative table does not apply to S-ILS 7R. Simultaneous approach authorized with ILS or LOC Rwy 8. DME required. Rwy 7R helicopter visibility reduction below 3/4 SM NA. LOC procedure NA during simultaneous operations. For inoperative ALS, increase S-LOC 7R visibility Cats A/B to 1 SM and Cats C/D to 1 1/2 SM.

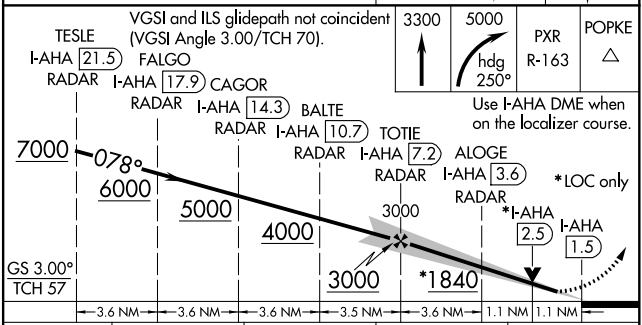
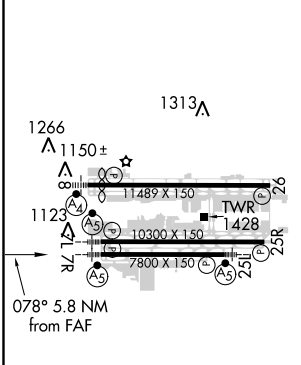
MALSR

MISSED APPROACH: Climb to 3300 then climbing right turn to 5000 on heading 250° and PXR VORTAC R-163 to POPKE/PXR 15 DME and hold.

D-ATIS 127.575	PHOENIX APP CON 128.65 353.9	PHOENIX TOWER 118.7 278.8 (Rwy 8-26) 120.9 254.3 (Rwy 7L-25R, 7R-25L)	GND CON 119.75 269.2 (N) 132.55 269.2 (S)	CLNC DEL 118.1 269.2	CPDLC
--------------------------	--	---	---	--------------------------------	-------

DME or RADAR REQUIRED



ELEV 1135	D	TDZE 1116
------------------	----------	------------------



HIRL Rws 8-26, 7L-25R and 7R-25L REIL Rwy 26	CATEGORY			
FAF to MAP 5.8 NM	A	B	C	D
Knots Min:Sec	60 5:48	90 3:52	120 2:54	150 2:19
	180 1:56	S-ILS 7R 1369-3/4 253 (300-3/4)		S-LOC 7R 1520-3/4 404 (400-3/4)
C CIRCLING	1740-1	605 (700-1)	2040-2 3/4 905 (1000-2 3/4)	2560-3 1425 (1500-3)

SW-4, 25 FEB 2021 to 25 MAR 2021

SW-4, 25 FEB 2021 to 25 MAR 2021