

JESSE TWO ARRIVAL

AL-322 (FAA)

PHOENIX SKY HARBOR INTL (PHX)

PHOENIX, ARIZONA

PHOENIX APP CON
 128.65 353.9
 PHOENIX TOWER
 118.7 278.8 (Rwy 8-26)
 120.9 254.3 (Rwy 7L-25R, 7R-25L)
 GND CON
 119.75 269.2
 D-ATIS
 127.575

WINSLOW
 112.6 INW
 Chan 73
 N35°03.70'
 W110°47.70'
 L-8, H-4

GALLUP
 115.1 GUP
 Chan 98
 N35°28.56'
 W108°52.36'
 L-8, H-4

DRAKE
 114.1 DRK
 Chan 88

ZUNI
 113.4 ZUN
 Chan 81
 N34°57.95'-W109°09.27'
 L-8, H-4

HOMRR
 N33°52.83'
 W111°24.27'

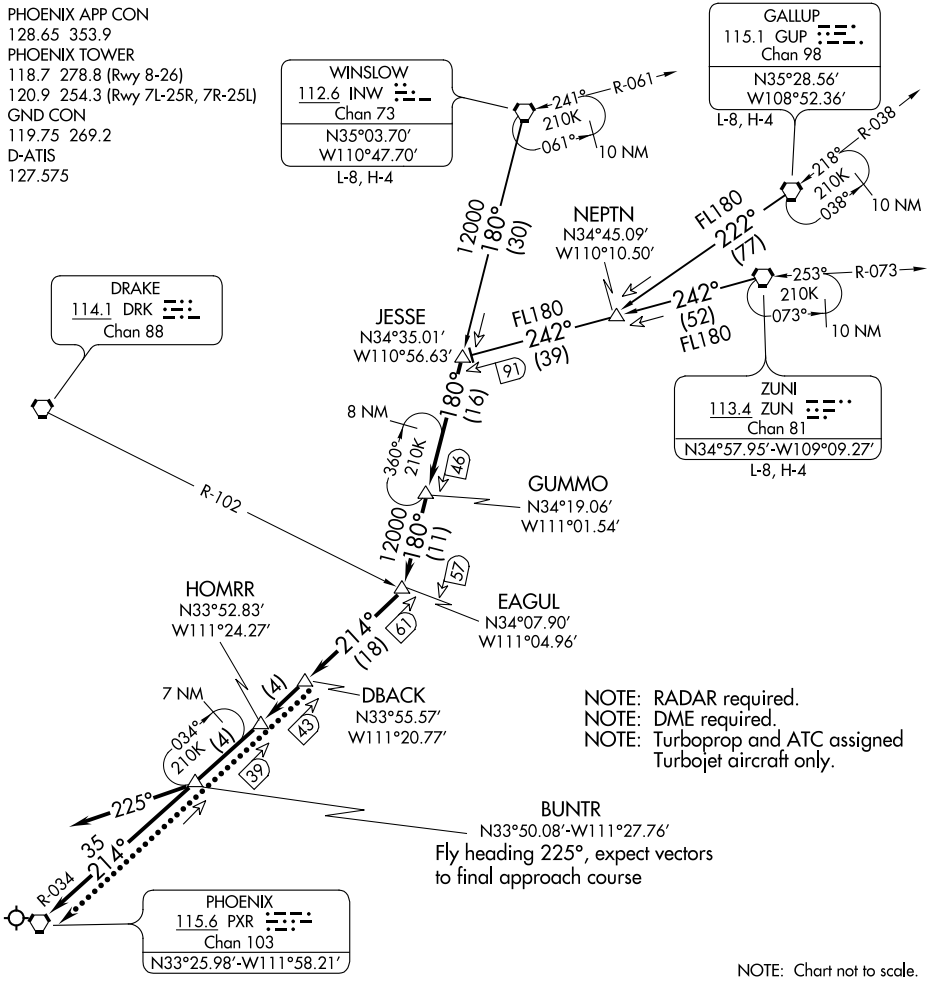
GUMMO
 N34°19.06'
 W111°01.54'

EAGUL
 N34°07.90'
 W111°04.96'

DBACK
 N33°55.57'
 W111°20.77'

BUNTR
 N33°50.08'-W111°27.76'
 Fly heading 225°, expect vectors
 to final approach course

PHOENIX
 115.6 PXR
 Chan 103
 N33°25.98'-W111°58.21'



NOTE: RADAR required.
 NOTE: DME required.
 NOTE: Turboprop and ATC assigned
 Turbojet aircraft only.

NOTE: Chart not to scale.

ARRIVAL ROUTE DESCRIPTION

GALLUP TRANSITION (GUP.JESSE2): From over GUP VORTAC on GUP R-222 and ZUN R-242 to JESSE INT. Thence. . . .

WINSLOW TRANSITION (INW.JESSE2): From over INW VORTAC on INW R-180 to JESSE INT. Thence. . . .

ZUNI TRANSITION (ZUN.JESSE2): From over ZUN VORTAC on ZUN R-242 to JESSE INT. Thence. . . .

. . . .From over JESSE on INW R-180 to GUMMO, then on INW R-180 to EAGUL, then on PXR R-034 to DBACK, then on PXR R-034 to HOMRR, then on PXR R-034 to PXR VORTAC.

LOST COMMUNICATIONS

After DBACK, proceed direct to PXR VORTAC.

JESSE TWO ARRIVAL

(JESSE.JESSE2) 27APR17

PHOENIX, ARIZONA
PHOENIX SKY HARBOR INTL (PHX)

SW-4, 25 FEB 2021 to 25 MAR 2021

SW-4, 25 FEB 2021 to 25 MAR 2021