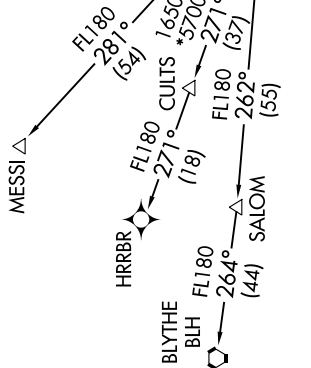


SW-4, 25 FEB 2021 to 25 MAR 2021

**TOP ALTITUDE:**  
8000

D-AITS 127.575  
CLNC DEL 118.1 269.2  
CPDLC  
GND CON 119.75 269.2 (NORTH)  
132.55 269.2 (SOUTH)  
PHOENIX TOWER 118.7 278.8 (Rwy 8-26)  
120.9 254.3 (Rwys 7L-25R, 7R-25L)  
PHOENIX DEP CON 126.8 269.6



**DEPARTURE ROUTE DESCRIPTION**

**TAKEOFF RUNWAYS 7L/R, 8:** Climb heading 078° to 1635, then direct FUTEF, then on track 132° to AZCRD, then on track 199° to USEYE, then on track 264° to cross MASVE at/above 7000 and at/below 220K, then on track 264° to OAKLI, then on track 268° to KEENS, thence. . . .

**TAKEOFF RUNWAYS 25L/R:** Climb heading 258° to intercept course 240° to WULKO, then on track 268° to KEENS, thence. . . .

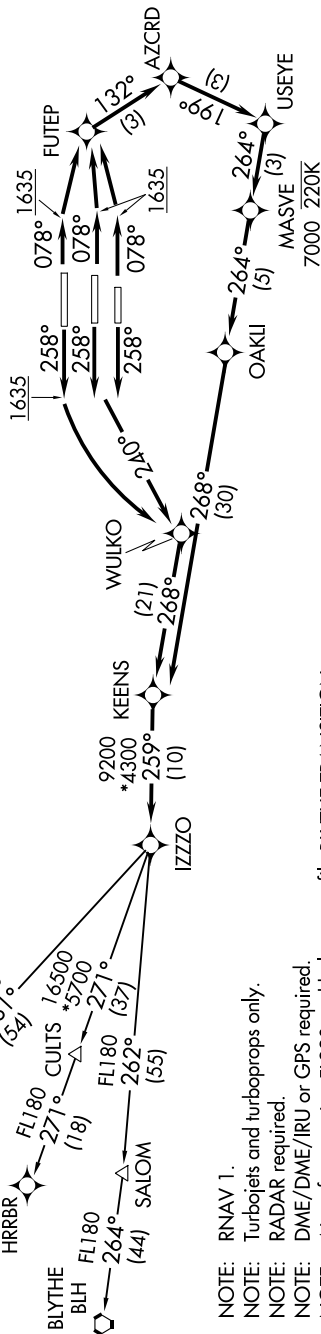
**TAKEOFF RUNWAY 26:** Climb heading 258° to 1635, then left turn direct WULKO, then on track 268° to KEENS, thence. . . .

. . . on track 259° to IZZO, then on (transition). Maintain 8000, expect higher altitude 3 minutes after departure.

**BLYTHE TRANSITION (KEENS2.BLH)**

**HRRBR TRANSITION (KEENS2.HRRBR)**

**MESSI TRANSITION (KEENS2.MESSI)**



**TAKEOFF MINIMUMS**

Rwys 7L/R, 8: Standard.  
Rwys 25L/R, 26: Standard with minimum climb of 500' per NM to 1635.

Requesting FL240

Requesting LAX and turboprops landing at LAX and turboprops landing at LAX and above, file HRRBR TRANSITION.

Requesting LAX and turboprops landing at LAX and above, file HRRBR TRANSITION.

NOTE: Chart not to scale.

- NOTE: RNAV 1.
- NOTE: Turbojets and turboprops only.
- NOTE: RADAR required.
- NOTE: DME/DME/IRU or GPS required.
- NOTE: Aircraft requesting FL220 and below must file BLYTHE TRANSITION.
- NOTE: Turbojets landing LAX, file MESSI TRANSITION.
- NOTE: Aircraft landing other than LAX and turboprops landing at LAX and above, file HRRBR TRANSITION.

SW-4, 25 FEB 2021 to 25 MAR 2021